

MARRICKVILLE
2204

WICKS PLACE

— ON THE PARK —

 TOGA

ESTABLISHED 1963

YOUR NEW URBAN NEIGHBOURHOOD WITHIN THE NEIGHBOURHOOD.

Beautiful homes with a rare sense of place in a liveable city village.



INTRODUCTION & TOGA

04

THE PROJECT

08

The story of Wicks Place begins with placemaking – spaces you enjoy spending time in, love coming home to, and where you feel a sense of wellbeing.

Wicks Place is created with deep respect for its surrounds and the needs of its residents, with architecture that sits naturally within its parkside landscapes.



GROUND FLOOR RETAIL

10

INTERIORS

12

Wicks Place's imaginative retail is your local meeting spot. Where café culture and village living are reinvented.

Seamless indoor-outdoor living, dual or even triple aspects in some apartments and luxurious natural finishes create an irresistible home.



YOUR NEIGHBOURHOOD

24

FUTURE MARRICKVILLE

40

From its friendly faces to its leafy streets, Marrickville is the kind of place where you can meet, eat, socialise and shop fresh just around the corner.

Marrickville is going through a revival that is as unique as the suburb itself with new places, spaces and amenities that channel its character and history.



THE TEAM

42

THE TOGA EXPERIENCE

47

Meet the award-winning Australian design professionals who are bringing life to this mixed-use retail destination, home and neighbourhood.

TOGA cares a great deal about your experience which is why their customer care team is on hand to guide you through each step of your property journey.

MARRICKVILLE'S NEW URBAN VILLAGE.

**THERE'S SO MUCH TO LOVE
ABOUT WICKS PLACE.**

The architecture by TURNER is inspired. Seen from the outside, rich natural brickwork and industry-inspired metal details tie the buildings into the suburban landscape, ensuring continuity between past and present. At the upper levels, a charcoal-metal crown adds lightness, while bespoke brick façades play on texture and tone to create visual interest and a material connection to its setting.

It's a home where you seem to live in the landscapes with an elevated garden inviting light and greenery into its heart. This lush central landscape is like an expansive outdoor room that functions as both a welcoming entry and internal oasis retreat. A place for chance meetings with neighbours or quiet repose, it offers lovely vistas from the apartments and uplifting green pause points as you come and go.



ALLAN VIDOR · MANAGING DIRECTOR · TOGA GROUP

FOR MORE THAN 57 YEARS, TOGA HAS CREATED PLACES THAT MAKE A POSITIVE AND LASTING IMPACT ON PEOPLE AND COMMUNITIES. BECAUSE EVERYONE DESERVES TO LIVE IN A PLACE THEY LOVE.

“At Wicks Place, we’re creating a thriving urban community that embraces the creativity and character of Marrickville. It’s less about revolution and more about evolution – creating a place that builds upon this suburb’s history and diversity – all those things that make Marrickville great.

“The setting, directly flowing onto Wicks Park is sensational. It brings a sense of openness and connection to the landscape that we’ve consciously incorporated into both the residential and retail spaces.

“The design by architectural firm TURNER, engenders community spirit while also delivering homes of superior

design, privacy, outlook and amenity. Similarly, the interiors by Richards Stanisich are beautifully conceived to bring natural warmth to their urban context.

“Importantly, TOGA’s capabilities mean we guide every aspect of our projects, from concept to design, build and beyond. It’s this peace of mind that

allows our customers to continue to choose and recommend us.

We are experts in creating multifaceted communities that fit seamlessly into their neighbourhoods while simultaneously producing beautifully liveable homes.”

CHANGING THE WAY WE LIVE FOR THE BETTER.

TOGA’s dedication to enriching communities and the lives of residents is embodied in the way we shape our combined residential, retail and dining precincts.

As creators of celebrated Bondi Boheme, Harbourfront Balmain and the much-anticipated Surry Hills Village, we model and reinvent true mixed-use neighbourhoods, giving each their own special and unique charm.



BOHEME · BONDI

BONDI BOHEME

This landmark mixed-use project skilfully blends the needs of residents, restaurant and hotel guests and shoppers alike, a catalyst for future quality projects in Bondi.

RETAIL CULTURE

At Bondi Boheme, TOGA created ‘The Hub’ an exceptional line-up of renowned restaurateurs, cafés and market retailers. Wicks Place will be no exception.



‘THE HUB’ RETAIL PRECINCT · BONDI



TOGA · HARBOURFRONT BALMAIN

HARBOURFRONT BALMAIN

Hugging the shoreline, this development brought a quintessentially Australian indoor-outdoor lifestyle and sense of place to Balmain’s foreshore.



ESTABLISHED 1963



A TRUE SENSE OF PLACE.

AT WICKS PLACE, WE'RE BUILDING A REAL NEIGHBOURHOOD WHERE IDEAS CROSS- POLLINATE AND NEW LIFE CAN GROW.

The story of Wicks Place begins with placemaking. What makes people gravitate to a neighbourhood or love a certain street? At its heart, Wicks Place is about building spaces that excite and engage people. A place you enjoy spending time in, love coming home to, and where you feel a sense of community and wellbeing. We've drawn on some of Australia's most experienced retail designers to bring life to this mixed-use retail destination, home and neighbourhood. Together, we've thought hard about what makes places great and how to create a liveable, dynamic neighbourhood that feels true to Marrickville's spirit. We've incorporated great spaces to shop – something organic and in sync with the local ethos. We've designed buildings that sit naturally in their surrounds. It's as much about the everyday wonders – having comfortable

spaces to sit by the park and somewhere safe to store your bike – as it is about the grand gestures. Our notion of great placemaking includes crafting a calibre of homes that people love to live in. They're comfortable and inspiring, design-focused and more in line with the space and amenity of a detached house. Plus, there's loads of lush green – in the elevated residential garden that fronts the park and in the cascading and trailing plantings that weave in and through the buildings. Wicks Place is the first stage of a greater Victoria Road Precinct that is set to reinvigorate this slice of Marrickville. Close to public transport, Sydenham Station and the new Sydenham Metro station, it promises a bold new benchmark for convenient village and parkside living.





ARTIST'S IMPRESSION

HEAD DOWNSTAIRS FOR AN EARLY COFFEE BEFORE WORK, OR GRAB A BITE TO EAT WHEN YOUR DAY IS DONE.

THE LIFE AND SOUL OF WICKS PLACE.

A place that brings everyone together. A meeting place, right on your doorstep. Your imaginative retail and dining precinct feels authentic, memorable, and in tune with the laid-back Marrickville vibe. Less urban, more green, it's somewhere to shop, to chat over espresso, dine alfresco and

watch people come and go. Grab a bite to eat or duck down for artisan treats. Find a favourite café that doubles as your office on those days you work from home. It's your village where café culture and living are reinvented.

HOMES DESIGNED WITH HEART.

EVERY ASPECT OF THESE BEAUTIFULLY CONSIDERED SPACES IS SIMPLE YET NATURALLY CRAFTED.

From the moment you step inside, there's a sense of wellbeing to these homes. They radiate a kind of style and liveability not often found in Sydney's inner west suburbs today. They are designed to allow people to live comfortably, creating house-like amenity that maximises storage while offering generous living areas that integrate wonderfully with the environment.

In the kitchens, island benches function as both a generous workspace and the social hub of the home. Elegant furniture-like designs create a one-off bespoke feel to the spaces. On the benches and splash backs, exquisite leathered-finish granite is both hard-wearing and beautiful to the touch, while generous soft-close drawers and cupboards create all-accommodating storage options.

Internal laundries and ducted air conditioning come standard in every residence while upgrades include extras such as integrated refrigerators and natural stone floors in the bathrooms.

As our everyday lives become busier and more connected, the desire to bring more natural tones into our homes grows stronger. The two material palettes, Kashmir and Cielo, offer timeless hues – colours and textures that make us feel relaxed and at ease. Each palette allows you to bring your own unique touches and personal collections to the spaces.

There's both a refined edge to the spaces and a durability to the natural materials and high-end inclusions that work for both owner occupiers, families and investors alike.



ARTIST'S IMPRESSION



**LOVE WHERE
YOU LIVE.**

BEAUTIFUL SPACES TO LIVE, RELAX AND ENTERTAIN.

Your sanctuary in an urban village. A place to be lived in and enjoyed. Flowing interiors, seamless indoor-outdoor transitions and dual or even triple aspect views in some apartments create an irresistibly liveable home. Careful planning ensures the spaces maintain a balance between urban and nature, elegance and ease, openness and privacy. Living areas are typically zoned away from the bedrooms, so people can live and sleep comfortably and undisturbed. They are such beautiful spaces to come home to, offering a welcoming house-like feel sculpted by plentiful light and air.

ARTIST'S IMPRESSION



ARTIST'S IMPRESSION

NATURALLY CRAFTED KITCHENS.

It is the heart of your home where daily life plays out people gather.

Stunning metal-framed kitchen islands create a focal point, somewhere to eat-in at breakfast or chat with guests as you prepare dinner, glass of wine in hand.

These open-hearted work zones cater to everyday and occasion dining with

ease. They tie together tactile “leathered finish” natural stone benches, oak timber highlights, premium Fisher & Paykel appliances and considerate extras such as large pantries and cleverly concealed appliance stations for a clean and uncluttered look.

Wicks Place has timeless spaces drawing upon quiet details such as the shadow line cabinet handles and the way the granite splash backs seamlessly integrate with the elegant joinery.



YOUR LUXURIOUS SANCTUARY.

The master suites are a study in comfort and quiet retreat. Natural textures and hues make these private spaces supremely restful with many featuring generous and elegantly crafted walk-in wardrobes, creating space for all your dressing essentials and accessories.

Double glazed windows and doors to all bedrooms ensure these tranquil spaces feel far removed from the bustle of the village below as you sleep at night, while while daybreak brings beautiful views and sunlight streaming into the rooms.



ARTIST'S IMPRESSION

CAPTURE THE MOMENTS.

Sliding doors open up to Sydney's bright skies, the city skyline and lush greenery over Wicks Park. Generous alfresco entertainment terraces merge your indoor and outdoor zones, expanding the living area and welcoming in abundant light and air.

The parkside setting is ideal for those with pets, creating spaces that easily transition between inside and out. In a rare offering for Marrickville, many of the upper-level homes capture sweeping city views.



VIEW TAKEN FROM LEVEL 11

LIVE LIKE A LOCAL.

Just a few short kilometres from Sydney's central business district, Marrickville is a vast – and hugely diverse – suburb. Vibrant and multi-layered, there's a real local culture that permeates every aspect of the area.

Embracing flavours from Asia, the Middle East and Europe, and it's the epicentre of Sydney's craft beer scene. There are incredible fresh food markets on

Sundays, a landmark recycling centre for DIY enthusiasts and creative types, along with beautiful community gardens offering a feast of fresh air. Coffee-lovers are spoilt for choice, not to mention the multitude of gastro pubs, providores and the major Marrickville Metro shops.

If you love living local, Marrickville has it all.

WHERE LIFE IS A WALK IN THE PARK.

**PARK YOURSELF A WHILE.
HEAD OUT ON YOUR BIKE OR IN YOUR
TRAINERS. MEET A FITNESS BUDDY, OR
SIMPLY CHILL UNDER A SHADY TREE.**

Parks are our special places where we can commune with nature and where children and adults alike can relax and de-stress. When we need a break from crowded trains and busy streets, green space is wonderful for our wellbeing.

Wicks Park, with its tennis courts and small playground, provides a welcome burst of green on your front door. Somewhere close for the kids to play, morning doggie runs, or to simply spread out and feel real grass beneath your feet.

Within a frisbee throw you'll find beautiful Enmore Park, one of the inner

west's most popular green spaces. As well as its playgrounds and cafés, the park houses the revamped Annette Kellerman Aquatic Centre. This state-of-the-art complex is perfect to recharge and refresh, hosting a wonderful new 50-metre pool for lap work, learn-to-swim and leisure pools for the kids, and an excellent gym.

Nearby, the storied Henson Park is great for sports fans. Home turf for the Newtown Jets, join the large crowds who turn up decked out in club colours to cheer on their team for home games.



LOCAL ARTISANS.

FLOWERS BY TERESA

OUR GROWING DESIRE FOR THE HANDMADE AND THE ARTISAN REALLY FINDS ITS HOME IN MARRICKVILLE.

Marrickville is where you'll find products handcrafted in limited batches and designs that celebrate the imperfections and character of their raw materials. It's where sustainably sourced coffee beans are roasted with love and care, and espresso machines hiss behind industrial garage doors. Eclectic, colourful, diverse. Marrickville is a celebrated hub for indie stores, culture, art and organic everything.



ONA COFFEE

A warm, minimalist space that's all about the coffee. With a backdrop of light beech, eucalyptus green and sunlight, this cult café is more like a cellar visit only the tasting is focused squarely on coffee rather than wine.



KURUMAC

It's a modern space but the menu is all Japanese-style comfort food. Chef Junichi Okamatsu creates twists on his favourite childhood dishes such as udon bowls or thick-cut Japanese toast topped with curried scrambled eggs and tempura prawns.



MATINEE

Inspired by Sydney's iconic milk bars of yesteryear, Matinee serves up a little bit of daytime and weekend theatre with its curved bar, linoleum floors, classic green velvet chairs and large crimson-tiled communal table.



POOR TOMS GIN HALL

FEEL CONNECTED TO THE ENERGY AND CULTURE OF MARRICKVILLE'S VIBRANT STREETS AND LANES.



POOR TOMS GIN HALL

POOR TOMS GIN HALL AT THE ALTAR OF LOCAL GIN

Tucked between a motorbike repair shop and a metal stamp factory, this boutique gin bar is just 100 meters from Wicks Place, distilling its own small batch juniper spirit in a converted warehouse. Located just around the corner from Sauce Brewing, Stockade, Batch, Grifter and Wildflower, the gin hall sits at the centre of Marrickville's brewery trail.

There's a wonderful church-like ambience to the craft venue with its white walls and chapelesque archway lighting up the back bar. Masses of hanging plants, each in custom-made pots, create an oasis of sorts in the sunlit space.

The drinks menu centres on Poor Toms' own house gins. Try a classic gin and tonic, a gin martini, or their changing line-up of cocktails experimenting with fresh and seasonal fruits and herbs. The bar also sells gin hall exclusives for takeaway, sweetened by strawberry, cardamom, hibiscus and ginger.

On Friday nights, the distillery and dog-friendly bar is often bustling with well-behaved pooches as their owners pay their respects at the marble-topped communal bar.

STOCKADE BREW CO

Located in an expansive old Marrickville factory space, Stockade Brew Co adds another venue to this booming craft beer suburb. With towers of barrels piled up along the walls, it's a slick venue designed around casual beer drinkers and enthusiasts alike. The production brewery and bar boasts space for 250 patrons, a private tasting room, tours and master-classes, plus there's a rotating roster of food trucks when you feel like a bite.



RISING FROM ITS FORMER INDUSTRIAL PAST, MARRICKVILLE'S WAREHOUSE-STYLE MICRO-BREWERIES SERVE UP A FRIENDLY ATMOSPHERE AND FRESH FLAVOURS TO THE NEIGHBOURHOOD.

BATCH BREWING CO

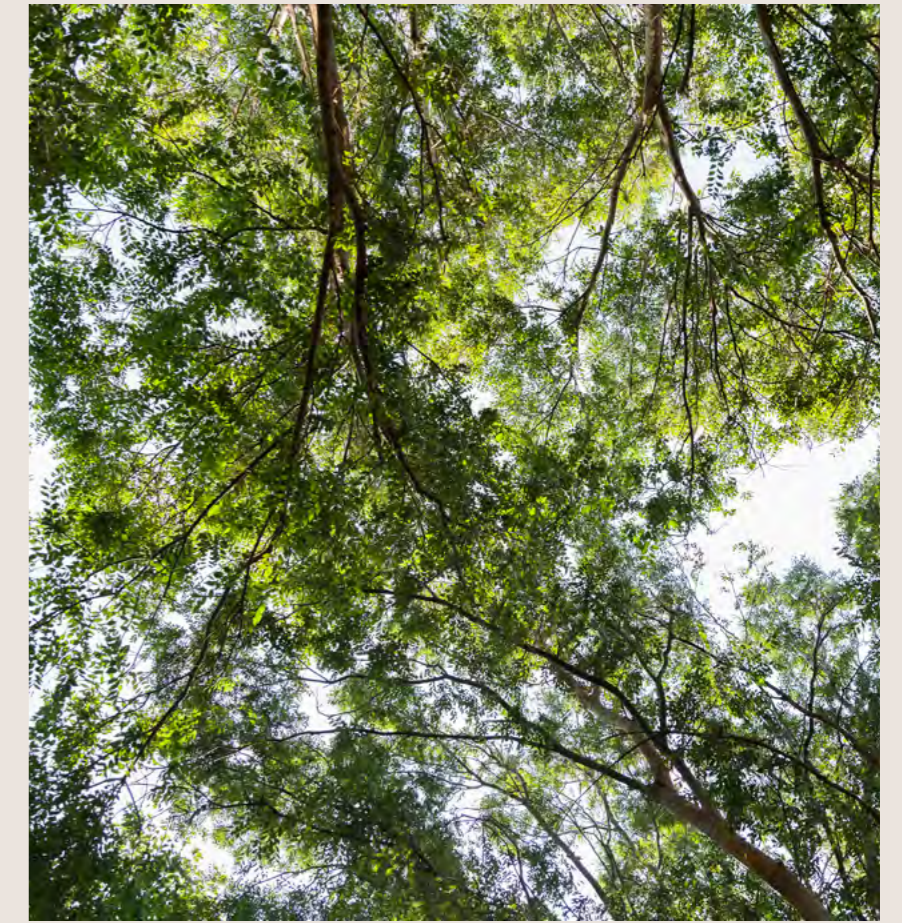
Inside one of Marrickville's roller-doored spaces, Batch Brewing joins Sydney's quickly growing craft beer scene – the brainchild of two expat American lacrosse players. With the help of friends, the Batch Brewing crew remodelled a former panel-beater's shop and made it home base for their crafted beer. They painted the interior black, built a bar from abandoned pallets, added some old leather couches, low tables and

rugs and a new neighbourhood drop-in spot was born. There's a steady stream of locals most days, catching up over a few drinks on scattered stools. Giant steel fermenting tanks make it clear this is a working micro-brewery with its long bar making a friendly venue for locals to duck in for a chat. Stop by to sample the latest brews then take home your beer of choice in 1.89-litre growlers or 640-millilitre bombers.



SPORTS & RECREATION

From tennis courts and sporting fields to the modern Annette Kellerman Aquatic Centre, there are plenty of opportunities nearby to keep active and stay fit, whether on your own, with a neighbour, or in a team.



NEIGHBOURHOOD PARKS

With Wicks Park on your doorstep and beautiful Enmore Park close by, Marrickville's abundant green spaces keep you cool, improve air quality, reduce noise and stress, and encourage you to lead a healthy life.

THE MORNING COFFEE RUN. THE DAILY DOG RUN. ON YOUR BIKE IN THE PARK, OR SAMPLING CRAFT BREWS ON A WEEKEND AFTERNOON. THIS IS MARRICKVILLE LIFE.

Marrickville is a true village with an all-embracing attitude that welcomes young and old. Along with the artisan venues and café culture so popular with grown-ups, Marrickville's great line-up of playgrounds, playing fields, schools, state-of-the-art amenities and community programs is increasingly a magnet for young families.



HELLO AUNTIE

A mother and son team bring their traditional-with-a-twist take on Vietnamese to this pretty and popular inner west space. The food is fresh and fragrant whether it's classic banh xeo and pho or fusion dishes such as duck and porcini mushroom gyoza.



PRECINCT 75

Housed in a series of character buildings, the creative hub at Precinct 75 showcases a wide range of design tenants from stylish interior designers like The Society Inc to leading photography studios, pop-up homewares stores and fashion brands.



VILLAGE WHOLEFOODS

Bring your own container to fill up with wholesome goodness. Everything is sold in bulk with no frills and no unnecessary waste. They stock more than 250 products, focused on affordable organic and non-organic goods, eco-friendly cleaning and personal care items.



**WEEKENDS OR WEEKDAYS,
MARRICKVILLE IS THE
PERFECT PLACE TO
MINGLE, DINE AND SHOP.**



One of Sydney's most intriguing suburbs, Marrickville is the buzzing epicurean heart of the inner west. Whether you're searching for a turmeric latte, a lunchtime Vietnamese roll or simply need to stock up on mozzarella, you'll find everything you're looking for in and around the streets of Marrickville.

Asian greens, seasonal veggies, pure honey and fresh flowers are on offer at the laidback market stalls. Fill up your trolley

with buffalo mozzarella at Paesanella Food Emporium, your one-stop shop for all things Italian.

For everyday essentials or connoisseur treats, Marrickville hosts a phenomenal array of options including two Woolworths, an Aldi, the organic farmers' market along with destination grocers, bakers and delicatessens that make it the envy of Sydney.

FOODIES WILL FIND MUCH TO LOVE ABOUT THIS INNER WEST HOOD FROM EATERIES LIKE EAT FUH'S FAMOUS HEARTY PHO TO GOURMET FOOD-TRUCK DINING THAT POPS UP ALL ACROSS THE SUBURB.



MARRICKVILLE MARKETS

They're something of a ritual for locals but Sydneysiders from far and wide also trek here to stock up on organic groceries or wander around the huge Reverse Garbage warehouse. From potted plants, vintage clothes and books to eco products and healing crystals, these markets sell almost everything. Grab a lunch box from one of the numerous pop-up stalls, then find a picnic table or throw down a rug on the grass and enjoy.



BOUTIQUE BREWERIES AND COSY JAZZ BARS KEEP THE INNER WEST PARTY GOING LATE INTO THE NIGHT.



From artsy bars and cool hang-out spots to sophisticated music halls, Marrickville comes alive after dark.

Sample craft beer in the private tasting room at Stockade as weekend afternoons turn into evenings. Later, as night falls,

the Lazybones lounge attracts a cool local crowd of music lovers and trendsetters with its stylish interior, lengthy cocktail list and live jazz most nights. Head upstairs where a moody room furnished

with velvet curtains, red walls and grand chandeliers invites patrons to sink into the huge leather sofas or chat on retro bar stools. There's pizza and global eats on offer if you're feeling peckish.

Or, for a vibe that runs from world music, jazz, folk, blues, cabaret and comedy from Australia and beyond, head to Camelot Lounge, Sydney's best-loved boutique performance venue.



6.7KM
SYDNEY CBD



650M
SYDENHAM
METRO & TRAIN
STATIONS



600M
ENMORE PARK



4.9KM
SYDNEY AIRPORT



3.5KM
SYDNEY UNIVERSITY



1.1KM
MARRICKVILLE
METRO SHOPPING
VILLAGE



JUST 5KM TO CENTRAL, 2KM TO SYDNEY UNIVERSITY, 12 MINUTES BY TRAIN TO THE CITY IN THE MORNING COMMUTE, WICKS PLACE IS IDEALLY PLACED FOR CONVENIENT INNER-CITY LIVING.

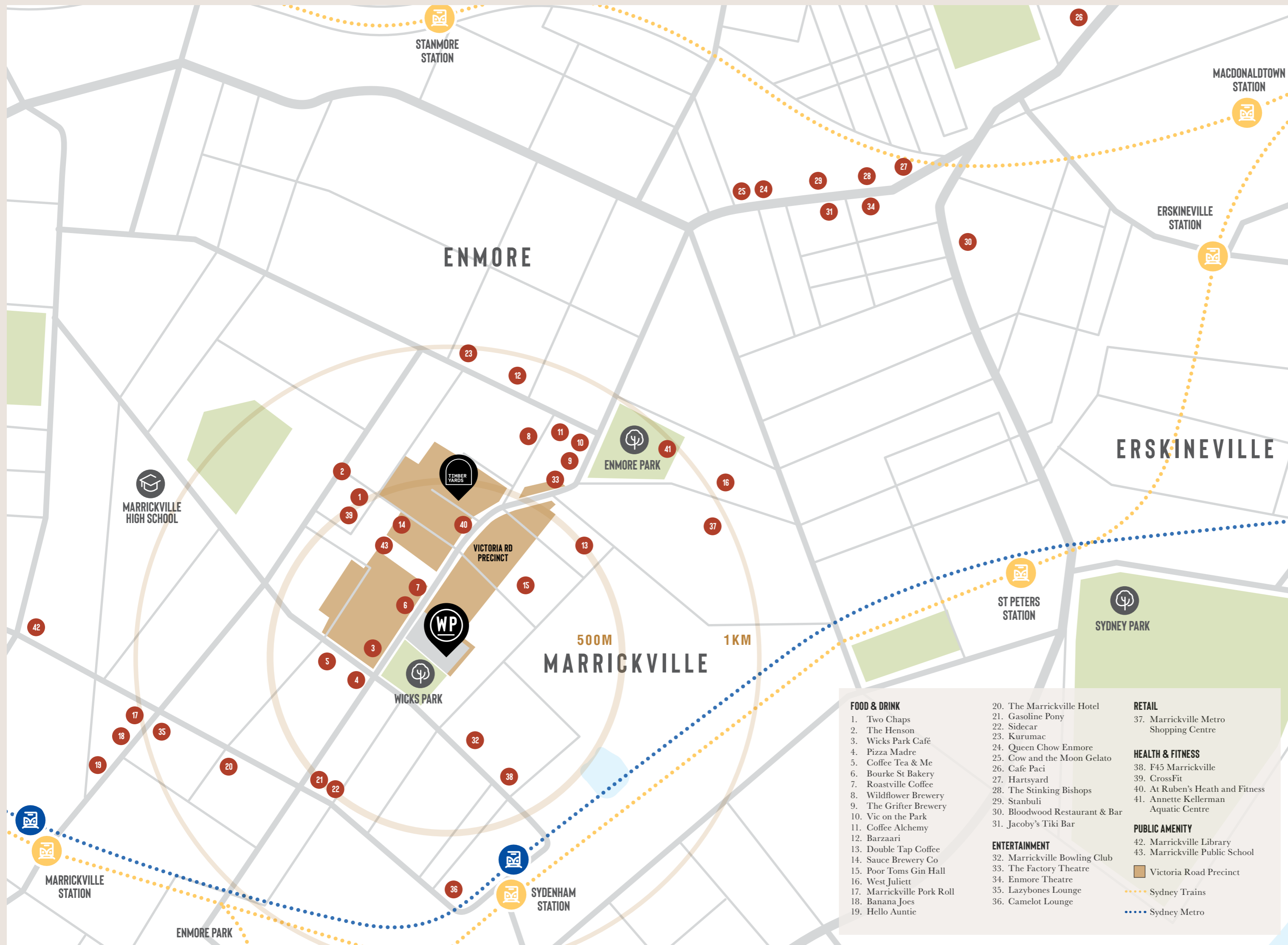
Marrickville is the place to be. With a growing population, thousands of new jobs and enriched infrastructure committed to the suburb, Marrickville is fast becoming Sydney's next emerging creative village.

This sprawling inner west suburb is well-connected

with three train stations – Marrickville and Sydenham – a bus system that services all the main arteries, and Sydney's international and domestic airports a 15-minute drive away.

This superior connectivity and growth make Marrickville an ideal investment opportunity.

- 1 Sydney University 3.5km
- 2 University of Technology Sydney 4.6km
- 3 Central Station 5.8km
- 4 Sydenham Train & Metro Station 650m
- 5 Marrickville Station 1.3km
- 6 Sydney CBD 6.7km
- 7 Enmore Park 600m
- 8 UNSW 8.3km
- 9 RPA Hospital 3.1km
- 10 Randwick Hospital 9.0km
- 11 Randwick Racecourse 8.8km
- 12 Sydney Football Stadium 7.7km
- 13 Sydney Cricket Ground 7.2km
- 14 Centennial Park 8.0km
- 15 Sydney Airport 4.9km
- 16 King St Newtown 2.4km
- 17 Marrickville Public School 500m
- 18 Marrickville Metro Shopping Village 1.1km
- 19 Enmore Rd High Street 1.2km
- 20 Sydney Park 2.2km



A NEW CHAPTER IN MARRICKVILLE'S FUTURE - THE VICTORIA ROAD PRECINCT



This visionary new precinct will lead the way in Marrickville's evolution into a vibrant modern lifestyle and living quarter shaped around green spaces, walkable neighbourhoods and re-imagined warehouse spaces as well as over 1100 new homes in total to be delivered.



WICKS PLACE

A thriving new village address, Wicks Place is the first residential offering within the wider Victoria Road Precinct offering quintessential inner west living and onsite retail in beautiful parkside surrounds.



TIMBERYARDS

Timberyards will house a one-of-a-kind campus space for inner-city Sydney, rich in amenities for creative industries and incubating start-ups with community, cultural and retail offerings at its heart.

SYDNEY'S NEWEST “METRO SUBURB”

Marrickville is going through a revival that is as unique as the village itself. New developments, community and creative spaces are unlike anything before seen in Sydney, channelling Marrickville's character, history and ethical core.

At its heart is the ground-breaking Victoria Road Precinct, a modern new living, lifestyle and creative hub with Wicks Place, the first of the precinct's residential projects. But there's much more being seeded nearby.

The old Marrickville Hospital site has recently been transformed into a stunning new library and neighbourhood meeting place. All around, urban renewal celebrates the area's working and industrial heritage.

Work has begun on the \$142 million expansion of the Marrickville Metro Shopping Centre, a project nearly a decade in the making, while much of Marrickville's industrial land has recently been re-zoned foreshadowing further revitalisation of the area.

Driving much of this change is the upcoming new Metro line which will see rapid turn-up-and-go trains reaching Sydney's Pitt Street in under 10 minutes. Once complete, WestConnex will also make anywhere in Sydney easily accessible with the St Peters interchange within 1km of the suburb.

BE A PART OF THE NEW VICTORIA ROAD PRECINCT.

WICKS PLACE FORMS THE FIRST RESIDENTIAL CHAPTER IN MARRICKVILLE'S EXCITING NEW VICTORIA ROAD PRECINCT, A BROADER PRECINCT-WIDE VISION CREATED BY OUR DEVELOPMENT PARTNER, DANIAS.

The bold Precinct plan sees a sprawling 36Ha cluster of former warehouses in Marrickville's industrial heartland re-imagined into one of Australia's largest creative, commercial and living centres. The Victoria Road Precinct will be reshaped allowing for an organic transformation that respects Marrickville's heritage while celebrating its future.

The new Victoria Road Precinct will bring vibrant life to your doorstep. If you're seeking retail therapy, you'll find artisan-style shops, creative studios and pop-up venues all congregating nearby. Order coffee on the run or find a place in the sun for a leisurely afternoon catch-up.



ARTIST'S IMPRESSION — TIMBERYARDS



ARTIST'S IMPRESSION — TIMBERYARDS

ONE OF THE FIRST PROJECTS TO BRING LIFE TO THE VICTORIA ROAD PRECINCT IS THE TIMBERYARDS. THE CAMPUS-STYLE DEVELOPMENT IS AMONGST THE FIRST OF ITS KIND IN THE INNER-CITY, CREATING A PERMANENT HOME FOR CREATIVE INDUSTRIES, START-UPS AND THE ARTS.

Instead of sweeping away what has gone before, this is urban renewal that celebrates the area's working heritage. Boutique studios, workshops and informal workspaces for creative industries and artists are combined with community spaces.

Flexible environments cater to a diversity of tenants – inventive retail and café culture, private businesses and collaborative work environments.

It encourages people to work locally

and creatively. Its vibrancy and dynamism will see cafés, small bars, pop-ups, galleries and exhibitions lining the streets making it a desirable destination for work and play. Focused on the 'Green Heart' at the centre of the campus, there'll also be a rotating program of community events for all to enjoy. The precinct attempts to capture the imagination and creative spirit of Marrickville that inspires us all.

The Victoria Road Precinct will brim with places and spaces designed to make life more interesting, vital and engaging.

Existing open spaces and parks will be updated as green and attractive public places while new parks, large and small, will be created to enhance the public domain. An outdoor cinema will draw people out to movies in the open air. It's where the pressures of city living dissolve, making space for the best things in life – being part of a local community, spending time with friends and family, and finding space to unwind.

**SPACE
FOR EVERYONE
TO ENJOY.**

THE TEAM.

TOGETHER, THEY HAVE SHAPED WICKS PLACE WITH PASSION AND INTEGRITY TO CREATE A NEW URBAN VILLAGE.

The creative minds behind Wicks Place have produced a richly layered neighbourhood that draws inspiration from nature, destinations people love to be in, and the unique culture of Marrickville itself. It's an award-winning team, carefully curated by TOGA to make this one-of-a-kind community a place and home to remember.

The masterplanning and innovative architecture by TURNER delivers beautifully considered residential living with an experiential village feel.

The landscapes, by celebrated Black Beetle, see immersive greenery and lush garden retreats flowing in and around your home – uplifting spaces to gather, stroll, and relax.

The interior design, by the style-leading team at Richards Stanisich, completes the Wicks Place story with the creation of homes that possess warmth, beauty and craft in equal measure.



WICKS PLACE

ARCHITECT - TURNER

WICKS PLACE IS CREATED WITH DEEP RESPECT FOR ITS SURROUNDS AND GREAT THOUGHT FOR THE NEEDS OF ITS RESIDENTS, PROMISING AN INDIVIDUAL RESPONSE TO MARRICKVILLE'S HUMAN SCALE AND FABRIC.

"Just as Marrickville gains strength in diversity, there's real diversity in the design layouts here too. There are triple and dual aspect apartments in one, two and three-bedroom homes. Even better, everyone gets an outlook. The upper levels capture sweeping city, district and park views while others enjoy vivid green backdrops over your landscaped communal gardens and across the public Wicks Park.

"Internally, the planning has been rigorously fine-tuned so that each apartment flows effortlessly, with materials chosen for both beauty and longevity. From the larger residences to the simplest one bedroom, every space has a great layout and wonderful features.

"We've strived to create homes that will age well and where people can see themselves living for many years to come."

"Our vision for Wicks Place draws upon Marrickville's longstanding community spirit and its dual residential and industrial past. We've sought to create a place that brings delight to those who live and visit, and leave a lasting legacy for the evolving suburb."

STEPHEN COX, TURNER



George & Allen, Waterloo

TURNER

TEAM

INTERIOR DESIGNER - RICHARDS STANISICH

THE SPACES ARE IMBUED WITH THE SERENE FEEL OF NATURE WHILE TACTILE FINISHES ADD AN ORGANIC QUALITY THAT WILL AGE WITH GRACE AND CHARACTER.

"Like the unique village of Marrickville itself, we've sought to give these homes their own voice. We wanted to give them house-like utility enhanced by the clarity of plentiful light and air.

We've taken cues from the building's architecture, the people who'll live here, and the natural environment.

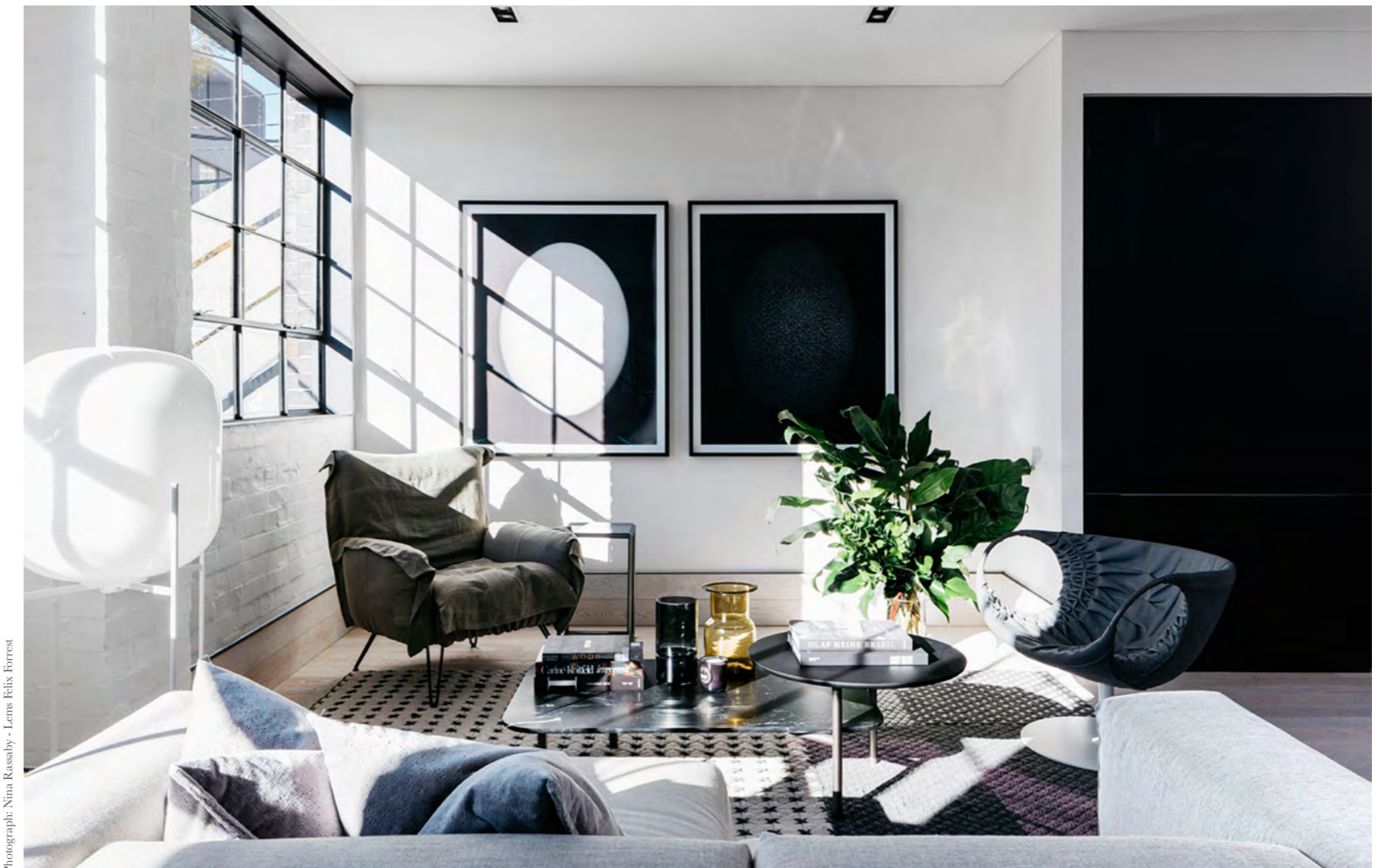
"Nature shapes the interior palette, a great counterpoint to our increasingly urban lives. The multi-hued natural stone on the benchtops

and the beautiful soft colouration across the two palette choices lend a welcome feeling of calm to the spaces.

"The design is simple, contemporary yet beautifully detailed, with layered finishes bringing luxurious texture and warmth. We've steered away from fads and trends and really sought to capture the unaffected spirit of the neighbourhood."

"We believe in doing things well – no shortcuts, novelty solutions, or rushed decisions. We craft spaces with integrity and intention – qualities that are critically important in bringing a project like Wicks Place to life."

KIRSTEN STANISICH, RICHARDS STANISICH



Photograph: Nina Rassaby - Lena Felix Borrest

The Riley, Darlinghurst

RICHARDS STANISICH

WICKS PLACE

LANDSCAPE ARCHITECT - BLACK BEETLE

OUR LANDSCAPE DESIGN FOR WICKS PLACE MELDS NATURE AND ARCHITECTURE, CREATING SPACES THAT WILL BE INSPIRATIONAL AND FRESH FOR MANY YEARS TO COME.

“The landscapes provide green outlooks from within the homes as well as spaces where people can escape or actively participate in the social life of Wicks Place. They will really enhance the experience of living here.

“The playful geometry of the podium gardens capitalises on natural connections to the lush parkland setting. A pergola covered in climbing plants and an extensive canopy of palm and native trees lend shade while the palette of

timeless materials responds to the warehouse-style architectural principles.

“Designed as a focal point for the family of beautiful buildings, these landscapes are places to catch up with friends and family, enjoy some quiet time in the open air, or watch over children playing. They give residents a series of informal areas to sit, converse, dine, or share a barbecue lunch, circled by pathways that skirt a wonderful open lawn.”

“Everyday connections to nature and greenery make a real difference in how we feel. Beautiful gardens, sweeping park and district views let residents retreat to breathe in the atmosphere or join in the social life of the building”

GISELLE BARRON AND
ILIA KOKALEVSKI, BLACK BEETLE.



Iconic, Waterloo

...black beetle...

TEAM

TOGA EXPERIENCE

TOGA HAS BEEN DEVELOPING, BUILDING AND ENRICHING COMMUNITIES FOR MORE THAN 57 YEARS. IN THAT TIME, WE HAVE ESTABLISHED OURSELVES AS ONE OF THE MOST EXPERIENCED, AUSTRALIAN OWNED, FULLY INTEGRATED PROPERTY DEVELOPERS.

Founded in 1963, TOGA is the developer and builder behind a series of Australia's most beloved and award-winning precincts, including Harbourfront Balmain, Bondi Boheme, the Darwin Waterfront Precinct, the Adelaide Treasury building, the Jones Bay Wharf rejuvenation and the Crown Street Women's Hospital redevelopment, now the Adina Hotel.

Excellence, ownership, integrity, agility, and a genuine passion for creating meaningful spaces are the building blocks of TOGA. Our common values have helped us evolve throughout the years and are our commitment to you; our customers, communities, partners and team.

TOGA has built a reputation for creating

high-quality properties and offering services that exceed our customers' expectations. We partner with our customers throughout their entire property journey, building open and transparent relationships. Our committed and dedicated team of property professionals are there with you from the very first moment you consider a TOGA property to the day we hand over your keys and beyond.

We offer you peace of mind, exceptional customer care and the reassurance that comes with buying from an established property company. Being part of the TOGA family is why our customers continue to choose and recommend us.

SHAPING MEANINGFUL SPACES FOR LIFE.



Harbourfront, Balmain



One Twenty Macquarie, North Ryde



Boheme, Bondi

TOGA
ESTABLISHED 1963



WICKSPLACE.COM.AU
1300 602 998

 TOGA
ESTABLISHED 1963