

WEST
KARRINYUP
VILLAGE

West Village is a collection of luxury residences adorned with highly curated resort-style amenities.



Artist Impression - Entry at Dusk

WEST VILLAGE

KARRINYUP

PERTH CBD

SCARBOROUGH

STIRLING
TRAIN STATION

LAKE GWELUP

LAKE KARRINYUP
COUNTRY CLUB

KARRINYUP
SHOPPING CENTRE

ST MARY'S
ANGLICAN SCHOOL

KEVAN LANGDON
RESERVE

HAMERSLEY
GOLF COURSE

TRIGG BUSHLAND
RESERVE

TRIGG BEACH

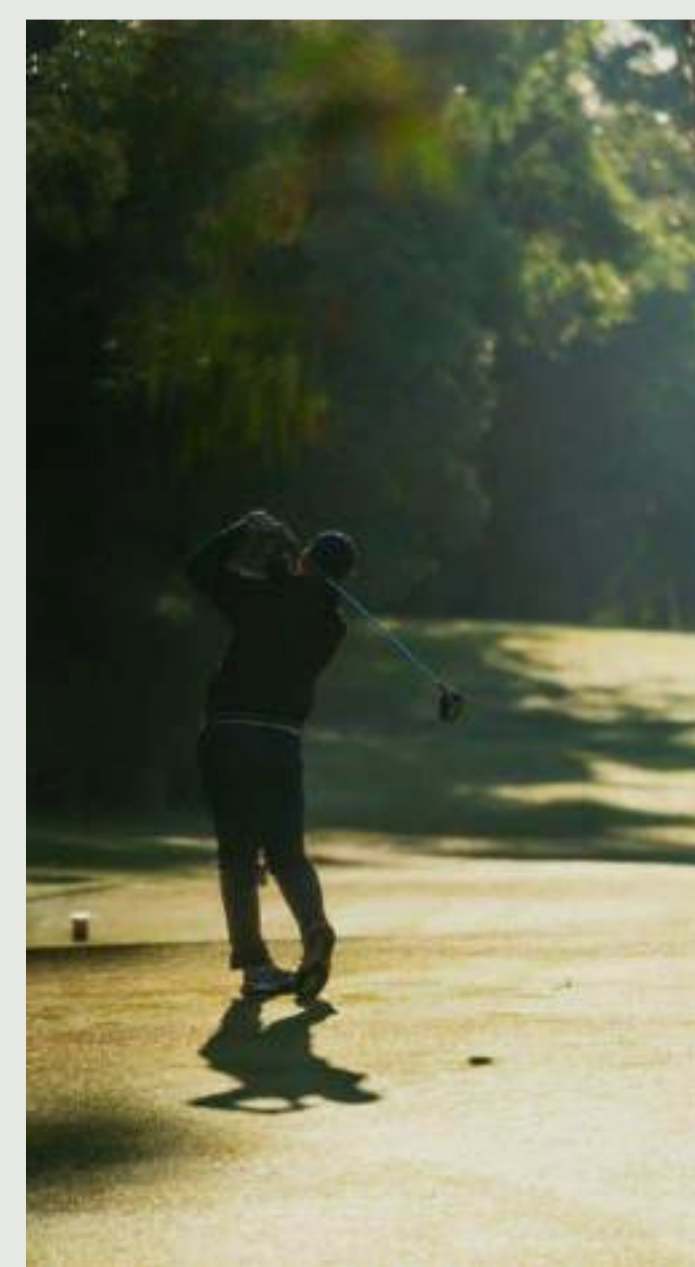
METTAMS POOL



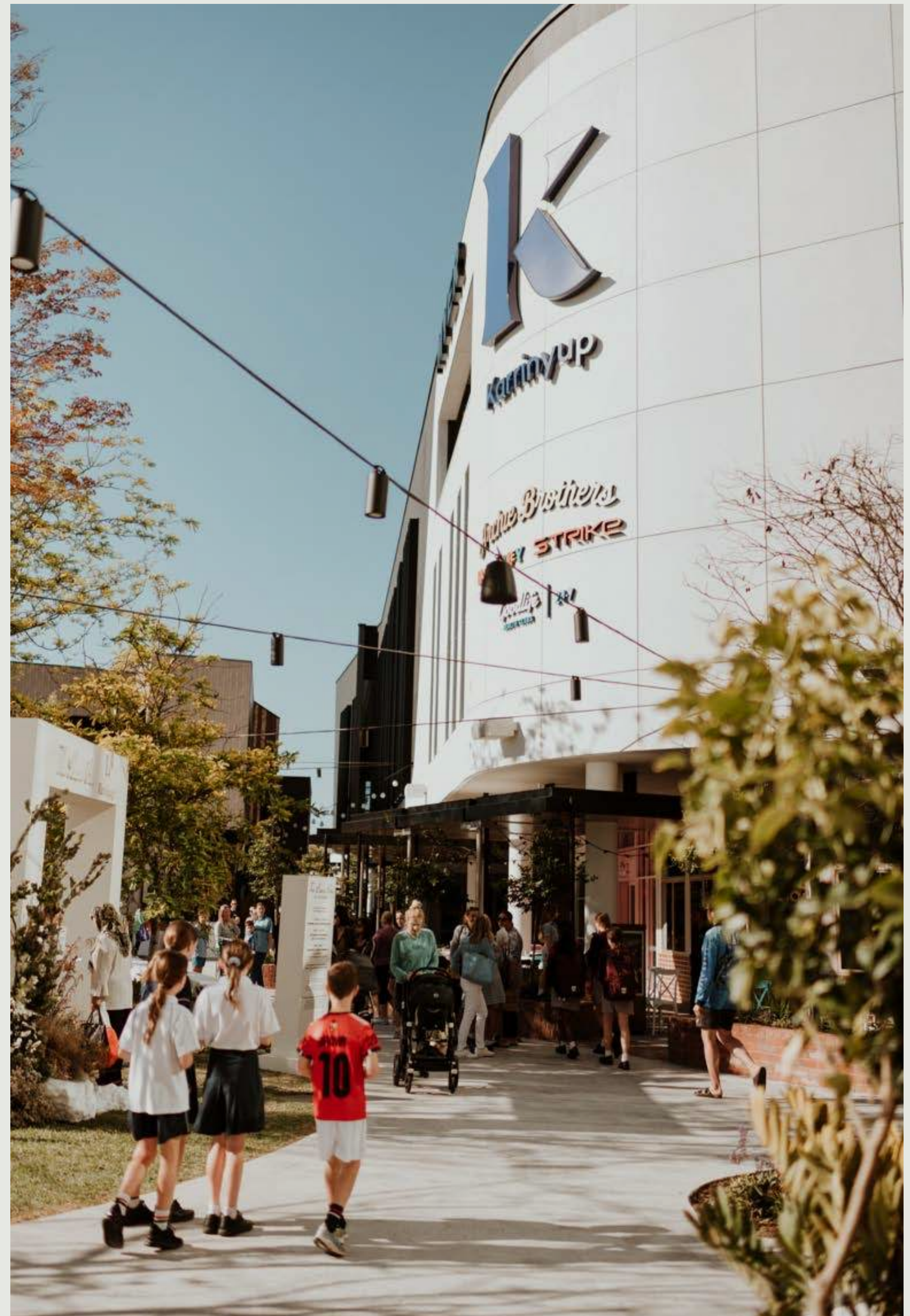
An aerial photograph of a rugged coastline. The top half of the image shows deep blue-green ocean waves crashing against a rocky shore, creating white foam. The middle section features a wide, light-colored sandy beach. To the right, a wooden boardwalk with a railing runs along the edge of the beach. The bottom half of the image shows a rocky, vegetated cliffside with patches of green and brown shrubs. The text "A THRIVING NATURAL LANDSCAPE ON YOUR DOORSTEP." is centered in white, serif font over the beach area.

A THRIVING NATURAL LANDSCAPE
ON YOUR DOORSTEP.

Panoramic views of the coastline overlooking North Beach and Trigg are quite simply unparalleled.



Setting the benchmark for an unrivalled lifestyle experience.



With the award-winning Karrinyup Shopping Centre at your doorstep, West Village residents are afforded a lifestyle of endless convenience.



A culinary haven of world-class eateries and exquisite bars, experience a new calibre of coastal luxury for every appetite.

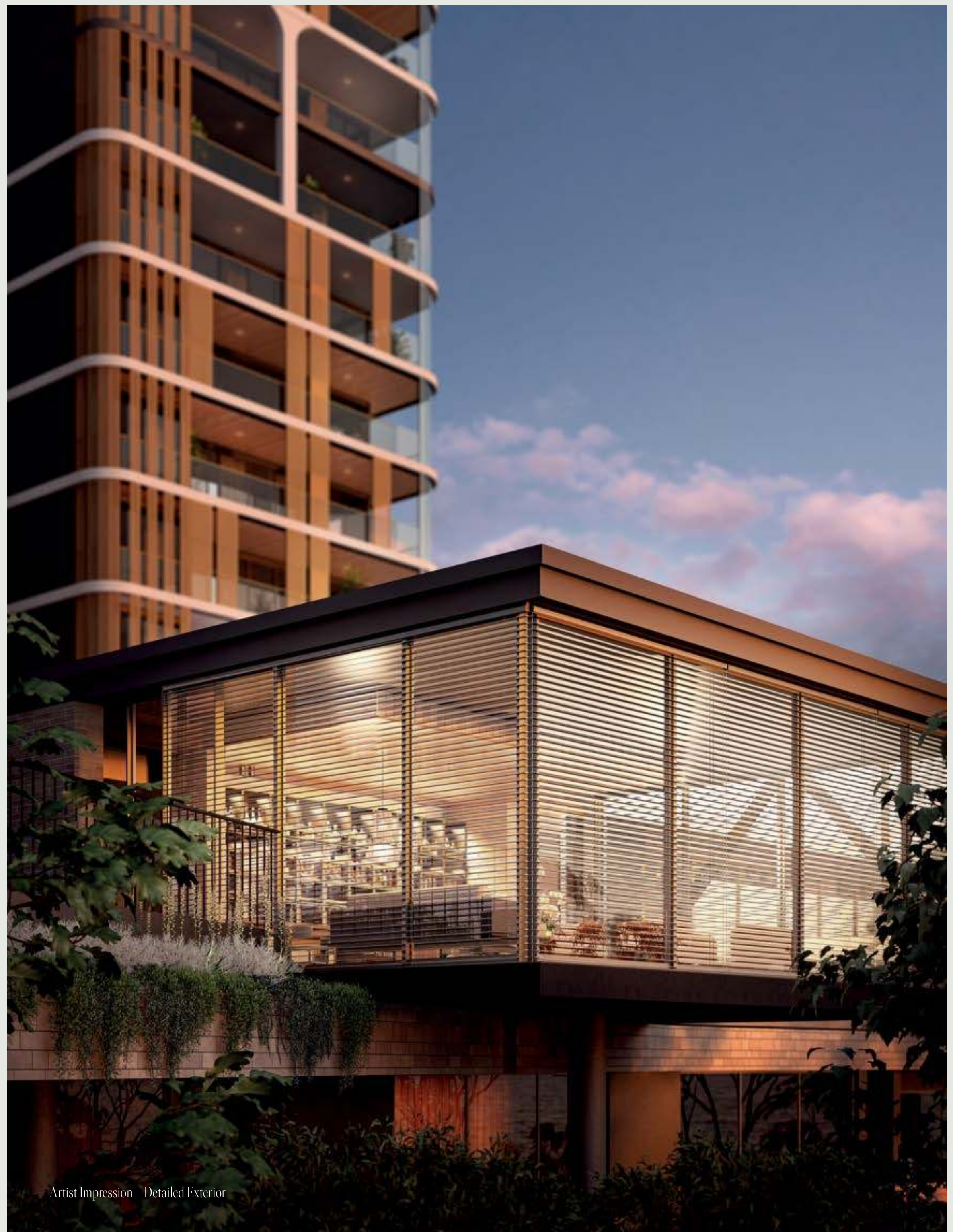


Stroll down the leafy boulevards for catch ups with friends, of old or new, over mouthwatering dishes that proudly marry locally-sourced produce with generational expertise.

Artist Impression – Main Street Food Precinct



Presenting a union of natural elegance
and tailored modernity.



Artist Impression - Detailed Exterior



Artist Impression - Detailed Exterior of Burroughs Building

Awaken to soaring ocean views over North Beach and Trigg as panoramic sights of the coastline cultivate a serene atmosphere every morning.

Artist Impression - Exterior facade with views to Trigg Beach





Artist Impression - Main Street Food Precinct



Artist Impression – Entry

Intertwining principles
of sustainability and design,
the architecture is defined by a
contemporary form and sculpted
from natural materials.

Residents are adorned with a collection
of exclusive resort-style amenities.



Artist Impression - Detailed Resident's Lobby

Embedding seamlessly into the fabric of its surrounds,
the resident's lobby welcomes you back home.



A nurturing space to retreat and revitalise amongst the manicured gardens, abundant landscaping and access to a sauna, steam room, yoga studio and state-of-the-art gym.



Discover the epitome of relaxation where cascading greenery flourishes amongst a luxurious pool.

Artist Impression – Swimming Pool & Private Poolside Cabanas



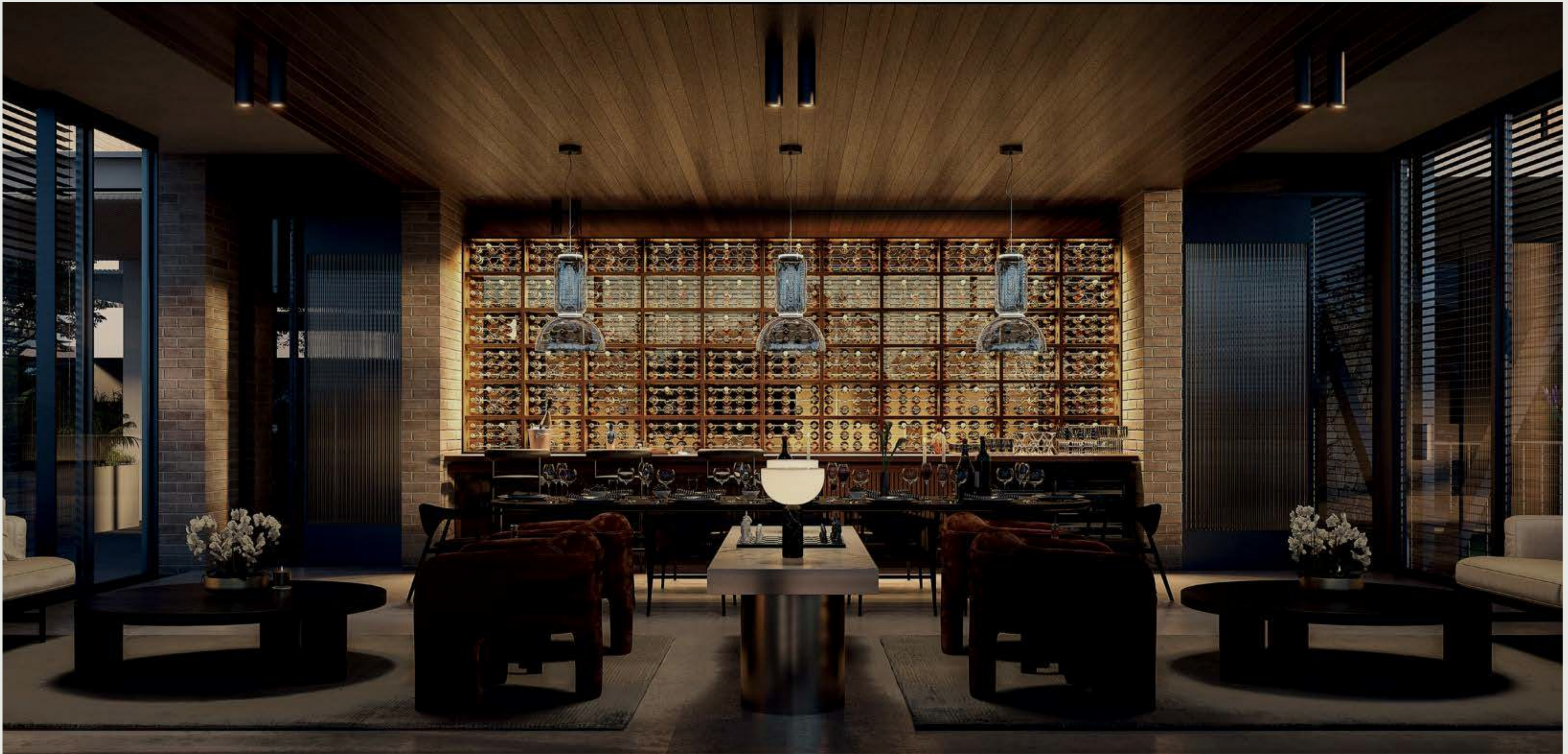


Artist Impression - Swimming Pool at Dusk

Residents are privy to a private dining room with chef's kitchen and wine lounge.

Artist Impression – Private Dining with Chef's Kitchen





Artist Impression - Wine Lounge

Relax in the residents' wine lounge
for an evening digestif.

The elegant resident's lounge is the perfect place to gather, connect and unwind.

Artist Impression - Private Lounge





Artist Impression – Outdoor BBQ & Firepit

Entertain friends and family in the
BBQ and alfresco dining area.

Artist Impression – Alfresco Dining & BBQ



RESIDENTS' RESORT



To Pizza Oven & Edible Gardens (112m²)



L1 - PODIUM

An expression of coastal refinement
and modern elegance.

Artist Impression – Living & Dining





Dawn



“Referencing the fresh and bright light of the beginning of the day, the pale stone harmonises seamlessly with the timber accents.”



Artist Impression – Dusk Kitchen



Artist Impression – Dusk Bathroom

Dusk

“Inspired by the colourful hues of the sky after the sun sets, the dusk scheme features a luxurious and subtly dramatic space.”



Artist Impression – Dark Kitchen



Artist Impression – Dark Bathroom

Dark

“Exuding a refined elegance, the dark scheme embraces self luminance and casts a gentle glow on deep textures.”



Unparalleled in its vision, the facade changes throughout the day from first light through to the 'golden hour' and to dusk.

An exclusive collection of platinum and penthouse suites sculpted from uncompromising luxury and natural beauty.

Artist Impression - Penthouse Executive Suite





Artist Impression - Penthouse Living



Artist Impression - Penthouse 3 Master Suite

The palatial master suites in the Penthouse designs are curated to perfection.

An Award Winning Team

West Village is the vision of long-established local developer Blackburne. Since Blackburne's inception in 2003, every year of that journey has allowed us to gain greater insight, expertise and understanding of our client's needs. As curators and cultivators of luxury space, our collection is built for the future, today. Our sites are carefully selected, taking into consideration the location and the historical significance, we pride ourselves in being the custodians of legacy and paying tribute to those who came before us.



BLACKBURNE



See Design Studio



Enquire Now 08 9429 5704
westvillagekarrinyup.com.au



Disclaimer: While all reasonable care has been taken in the preparation of this brochure and the particulars contained herein, it is intended to be a visual aid and does not necessarily depict the finished state of the property or object shown. No liability whatsoever is accepted for any direct or indirect loss or consequential loss or damage arising in any way out of any reliance upon this brochure. Purchasers must rely upon their own enquiries and inspections. Furniture is not included with the property. Dimensions and specifications are subject to change without notice. Illustrations and photographs are for presentation purposes and are to be regarded as indicative only. This brochure does not form part of, and is not, an offer or a contract of sale.

