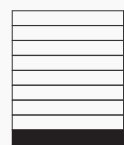
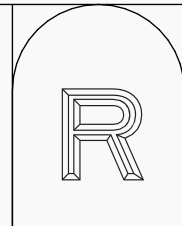




# THE ROTHSCHILD

## ROSEBERY



**BUILDING B**  
**GROUND**

[THEROTHSCHILD.COM.AU](http://THEROTHSCHILD.COM.AU) / 1300 219 453

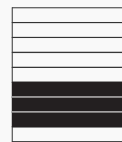
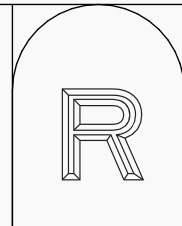
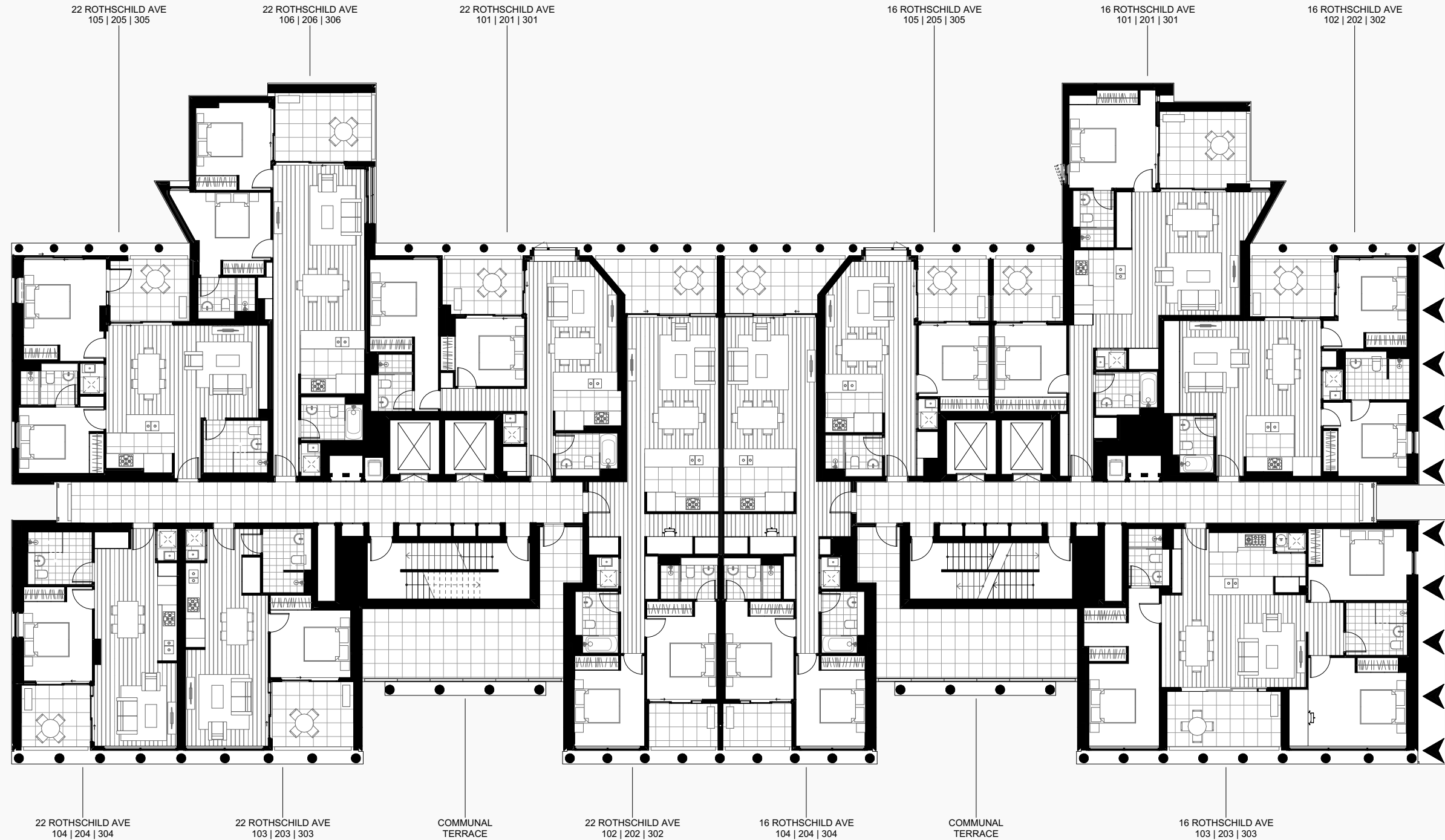
Disclaimer: These are preliminary, indicative floor plans not drawn to scale and are subject to planning and other approvals. Please note that these floor plans were produced prior to completion of construction. Any measurements shown are calculated in accordance with the relevant method of measurement required by the Strata Schemes Development Act 2015. Location and extent of solid façade elements, columns, apartment dimensions, floor and apartment layouts, levels, designs, diagrams, structures, configurations and ratios of different configurations, tile set-outs, areas, fittings, finishes and specifications are approximate only and subject to change without notice in accordance with the provision of the Contract for Sale or where required for compliance, planning, building regulations, other law or for any other reason. The furniture is not with any sale unless otherwise disclosed in the Contract for Sale. Prospective purchasers must make and only rely on their own assessments and seek their own professional advice in all respects. The vendor makes no representations or warranties by providing this indicative floor plan in connection with any aspect of the apartment including its layout, dimensions, specifications and fittings. Prepared November 2022, V1.





# THE ROTHSCHILD

## ROSEBERY



**BUILDING B**  
**LEVEL 1-3**

[THEROTHSCHILD.COM.AU](http://therothschild.com.au) / 1300 219 453

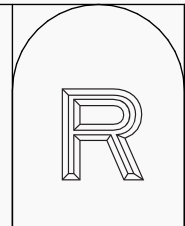
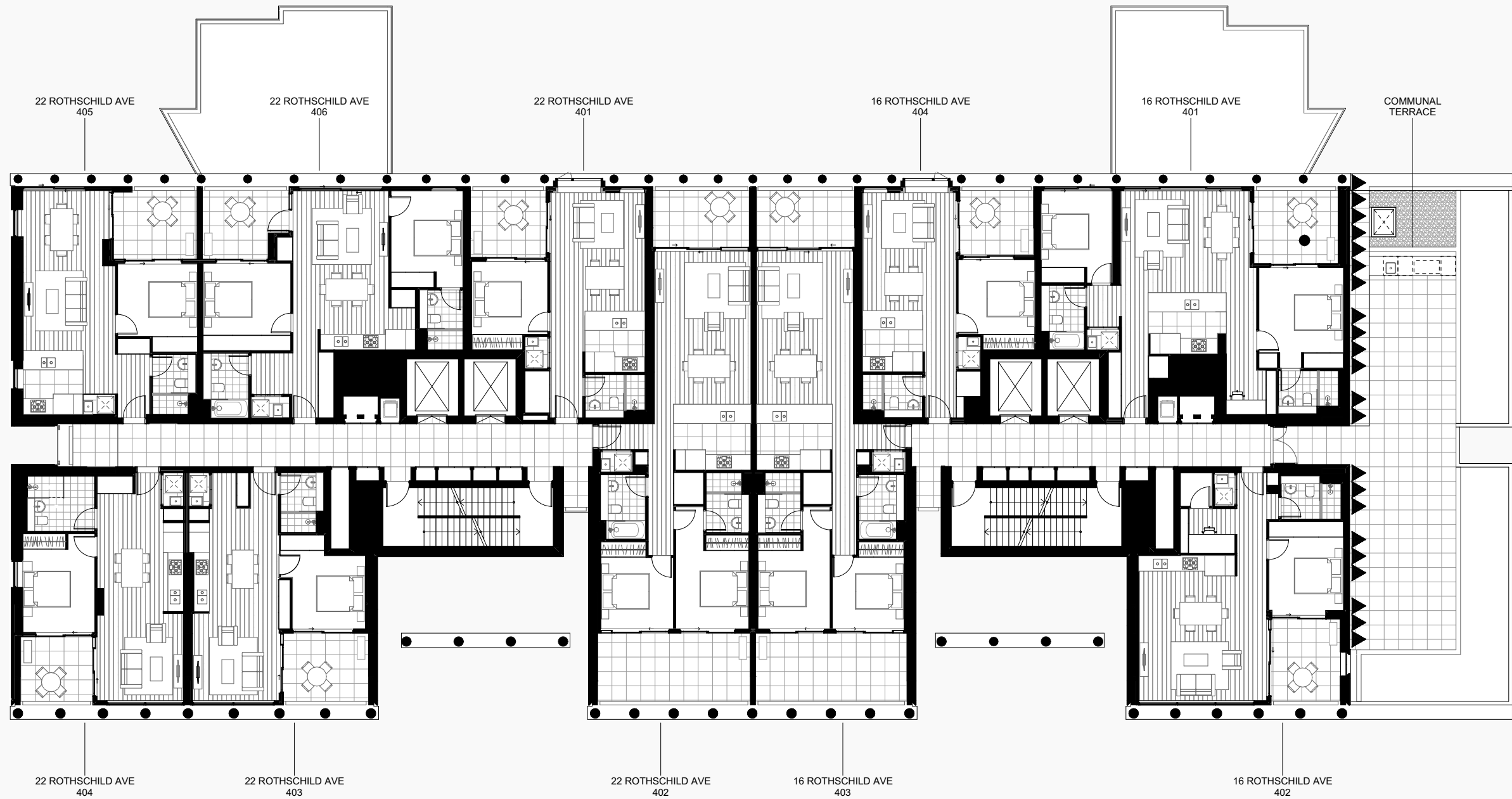
Disclaimer: These are preliminary, indicative floor plans not drawn to scale and are subject to planning and other approvals. Please note that these floor plans were produced prior to completion of construction. Any measurements shown are calculated in accordance with the relevant method of measurement required by the Strata Schemes Development Act 2015. Location and extent of solid façade elements, columns, apartment dimensions, floor and apartment layouts, levels, designs, diagrams, structures, configurations and ratios of different configurations, tile set-outs, areas, fittings, finishes and specifications are approximate only and subject to change without notice in accordance with the provision of the Contract for Sale or where required for compliance, planning, building regulations, other law or for any other reason. The furniture is not with any sale unless otherwise disclosed in the Contract for Sale. Prospective purchasers must make and only rely on their own assessments and seek their own professional advice in all respects. The vendor makes no representations or warranties by providing this indicative floor plan in connection with any aspect of the apartment including its layout, dimensions, specifications and fittings. Prepared November 2022, V1.





# THE ROTHSCHILD

## ROSEBERY



**BUILDING B**  
**LEVEL 4**

[THEROTHSCHILD.COM.AU](http://therothschild.com.au) / 1300 219 453

Disclaimer: These are preliminary, indicative floor plans not drawn to scale and are subject to planning and other approvals. Please note that these floor plans were produced prior to completion of construction. Any measurements shown are calculated in accordance with the relevant method of measurement required by the Strata Schemes Development Act 2015. Location and extent of solid façade elements, columns, apartment dimensions, floor and apartment layouts, levels, designs, diagrams, structures, configurations and ratios of different configurations, tile set-outs, areas, fittings, finishes and specifications are approximate only and subject to change without notice in accordance with the provision of the Contract for Sale or where required for compliance, planning, building regulations, other law or for any other reason. The furniture is not with any sale unless otherwise disclosed in the Contract for Sale. Prospective purchasers must make and only rely on their own assessments and seek their own professional advice in all respects. The vendor makes no representations or warranties by providing this indicative floor plan in connection with any aspect of the apartment including its layout, dimensions, specifications and fittings. Prepared November 2022, V1.



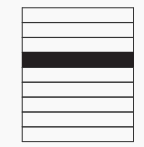
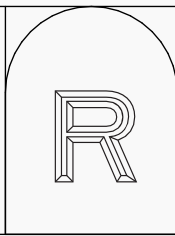


# THE ROTHSCHILD

## ROSEBERY



[THEROTHSCHILD.COM.AU](http://THEROTHSCHILD.COM.AU) / 1300 219 453



**BUILDING B**  
**LEVEL 5**

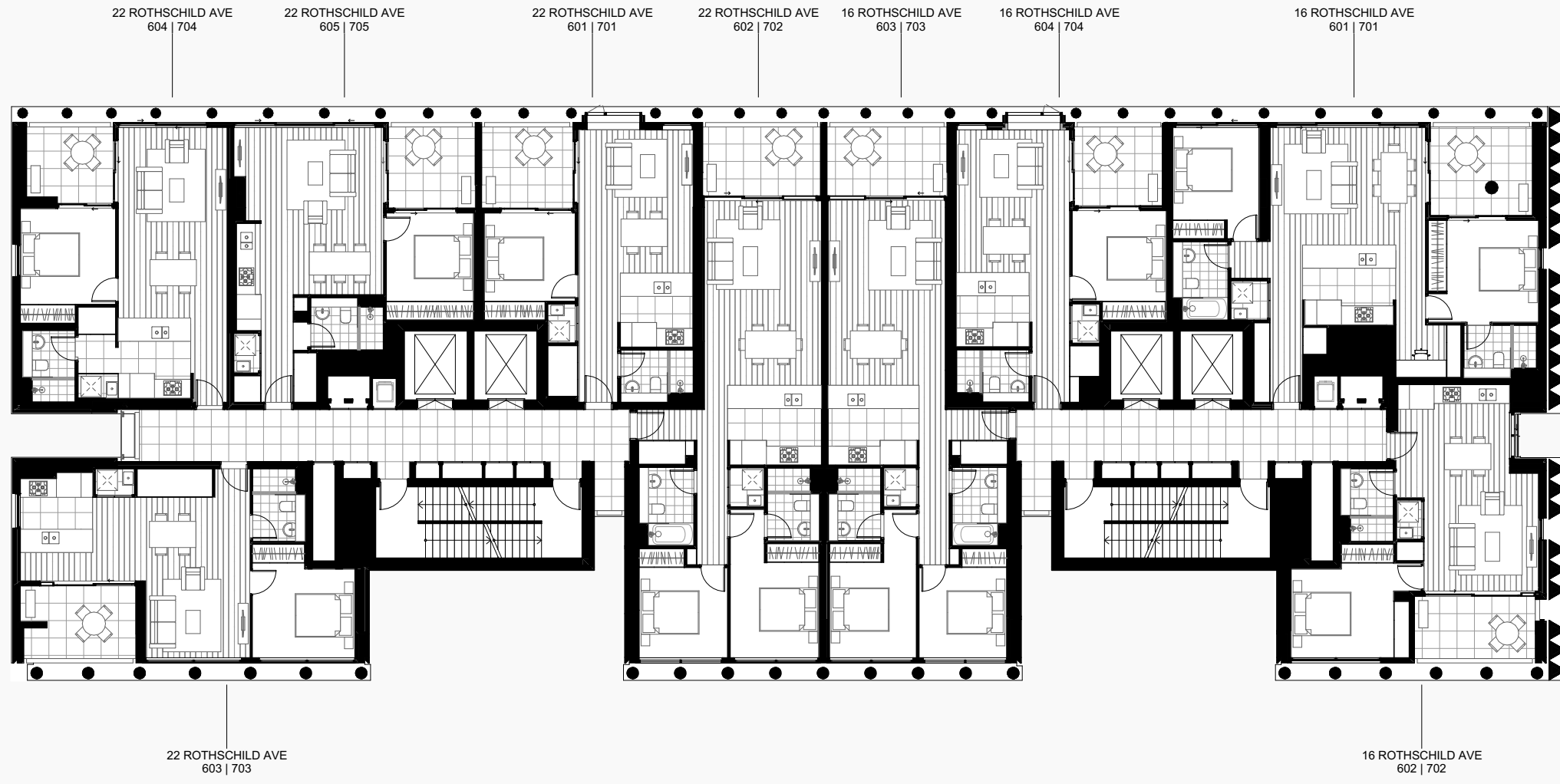
Disclaimer: These are preliminary, indicative floor plans not drawn to scale and are subject to planning and other approvals. Please note that these floor plans were produced prior to completion of construction. Any measurements shown are calculated in accordance with the relevant method of measurement required by the Strata Schemes Development Act 2015. Location and extent of solid façade elements, columns, apartment dimensions, floor and apartment layouts, levels, designs, diagrams, structures, configurations and ratios of different configurations, tile set-outs, areas, fittings, finishes and specifications are approximate only and subject to change without notice in accordance with the provision of the Contract for Sale or where required for compliance, planning, building regulations, other law or for any other reason. The furniture is not with any sale unless otherwise disclosed in the Contract for Sale. Prospective purchasers must make and only rely on their own assessments and seek their own professional advice in all respects. The vendor makes no representations or warranties by providing this indicative floor plan in connection with any aspect of the apartment including its layout, dimensions, specifications and fittings. Prepared November 2022, V1.



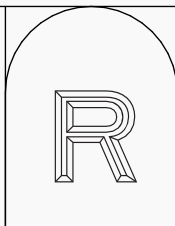


# THE ROTHSCHILD

## ROSEBERY



[THEROTHSCHILD.COM.AU](http://THEROTHSCHILD.COM.AU) / 1300 219 453



**BUILDING B**  
**LEVEL 6-7**

Disclaimer: These are preliminary, indicative floor plans not drawn to scale and are subject to planning and other approvals. Please note that these floor plans were produced prior to completion of construction. Any measurements shown are calculated in accordance with the relevant method of measurement required by the Strata Schemes Development Act 2015. Location and extent of solid façade elements, columns, apartment dimensions, floor and apartment layouts, levels, designs, diagrams, structures, configurations and ratios of different configurations, tile set-outs, areas, fittings, finishes and specifications are approximate only and subject to change without notice in accordance with the provision of the Contract for Sale or where required for compliance, planning, building regulations, other law or for any other reason. The furniture is not with any sale unless otherwise disclosed in the Contract for Sale. Prospective purchasers must make and only rely on their own assessments and seek their own professional advice in all respects. The vendor makes no representations or warranties by providing this indicative floor plan in connection with any aspect of the apartment including its layout, dimensions, specifications and fittings. Prepared November 2022, V1.



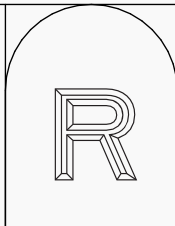


# THE ROTHSCHILD

## ROSEBERY



[THEROTHSCHILD.COM.AU](http://therothschild.com.au) / 1300 219 453



**BUILDING B**  
**LEVEL 8**

Disclaimer: These are preliminary, indicative floor plans not drawn to scale and are subject to planning and other approvals. Please note that these floor plans were produced prior to completion of construction. Any measurements shown are calculated in accordance with the relevant method of measurement required by the Strata Schemes Development Act 2015. Location and extent of solid façade elements, columns, apartment dimensions, floor and apartment layouts, levels, designs, diagrams, structures, configurations and ratios of different configurations, tile set-outs, areas, fittings, finishes and specifications are approximate only and subject to change without notice in accordance with the provision of the Contract for Sale or where required for compliance, planning, building regulations, other law or for any other reason. The furniture is not with any sale unless otherwise disclosed in the Contract for Sale. Prospective purchasers must make and only rely on their own assessments and seek their own professional advice in all respects. The vendor makes no representations or warranties by providing this indicative floor plan in connection with any aspect of the apartment including its layout, dimensions, specifications and fittings. Prepared November 2022, V1.

