



RHODES CENTRAL  
O A S I S



**Billbergia**  
*creating communities®*













# A secluded escape unlike anywhere in the city.

Rhodes occupies one of the most dramatic landscapes in Sydney. Set in an area of outstanding natural beauty, the peninsula suburb offers tranquil green waterfront surroundings just 25 minutes from Sydney CBD and 18 minutes from Parramatta CBD.

Over 30 years ago, John Kinsella, Founder of Billbergia had a vision for Rhodes. Recognising the areas idyllic waterfront location, spectacular panoramic views, and enviable location at the centre of it all, Billbergia transformed the peninsula and created not just a new city precinct, but a thriving community both socially and economically.

Artist Impression



Welcome home to  
indulgent living as  
nature intended.





Rhodes Central is a world class development, set over 3.5 hectares. Featuring contemporary residential apartments, vibrant retail and dining and carefully conceived lifestyle amenities all connected by welcoming outdoor spaces and landscape design.

Designed by SJB Architects, Oasis is the fourth of the five iconic residential towers at Rhodes Central and is inspired by the diverse colours, culture and natural surroundings that define the peninsula landscape.

The thriving residential community is balanced with all the conveniences of modern city living providing accessibility, with a rich social and cultural scene.

Rhodes Central Shopping Centre is a major attraction in the region with 12,000sqm of retail including 55 shops, a modern Woolworths supermarket and 15 cafes and restaurants in Bamboo Lane, a dining precinct inspired by Asia's bustling hawker lanes.

The health and recreation centre incorporates a carefully conceived suite of lifestyle amenities with state-of-the-art gym, spa, games rooms, indoor sporting courts, a residents lounge and business suite. In addition, nurture your child's growth with a new early childhood centre with welcoming outdoor spaces and landscape design.





# Rhodes Central in the heart of Sydney.

## Rhodes Central

- 1. Oasis Residences (Now Selling)
- 2. Peake Residences
- 3. Shoreline Residences
- 4. Walker Residences
- 5. Woolworths Rhodes
- 6. Rhodes Central Shopping Centre

## Childcare & Education

- 7. Rivendell School
- 8. Concord West Public School
- 9. Wentworth Point Public School
- 10. Meadowbank Public School
- 11. Rhodes Children's Centre
- 12. St Mary Multicultural Early Learning Centre Rhodes
- 13. Rhodes Central Preschool
- 14. Papilio Early Learning Ryde
- 15. Rhodes Corporate Park Child Care

## Retail and Entertainment

- 16. Andiamo Trattoria Rhodes
- 17. Oliveto Ristorante & Bar
- 18. Bare Witness
- 19. Cedrus Lebanese Restaurant
- 20. Italian Street Kitchen Meadowbank

## Parks & Recreation

- 21. L H Waud Sports Field
- 22. Meadowbank Park Tennis Courts
- 23. Rhodes Boat Ramp



## Rhodes Waterside

Chambers Fine Coffee, IKEA, Lid & Jar, Rhodes Phoenix, Ribs & Burgers, Smokkim, Tomodachi Restaurant



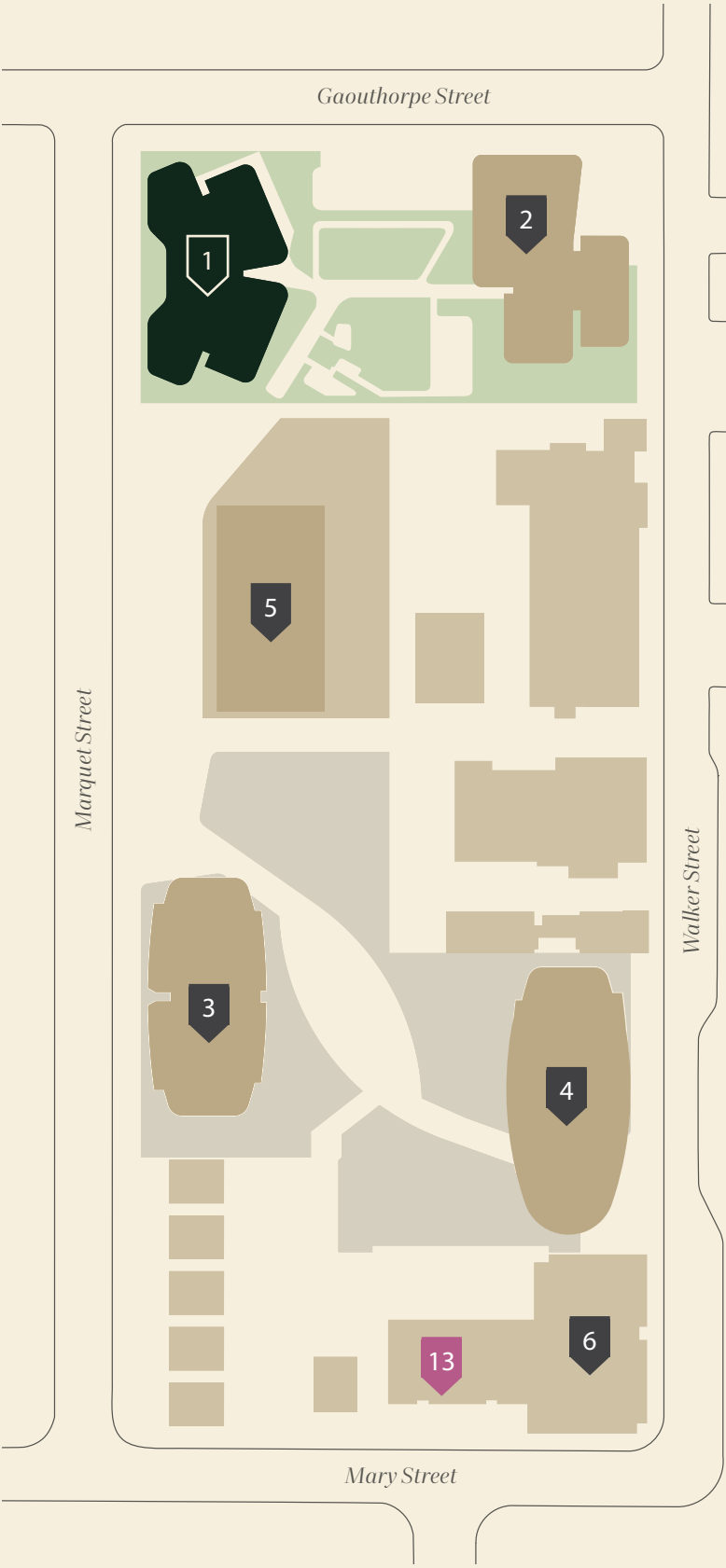
## Rhodes Corporate Park



## Concord Repatriation General Hospital



## Parks & Greenspace







Artist Impression



---

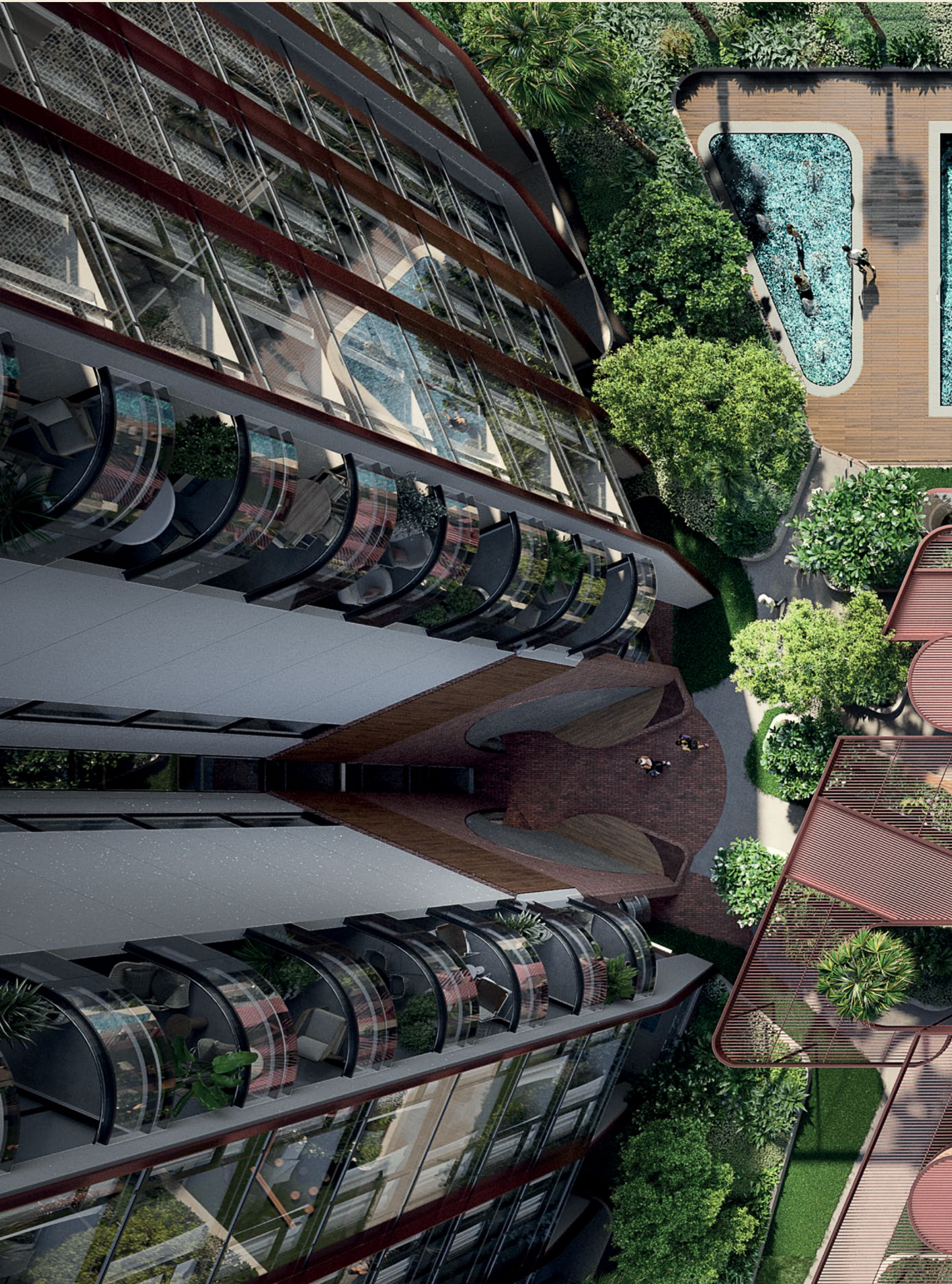
# A sense of place.

Oasis is the new star of luxury living at Rhodes Central. A modern, residential building with lush natural garden landscapes, luxury resort style amenities and a vibrant dining and entertainment centre nearby. Oasis is the best of both worlds, a retreat in serene surroundings with the excitement of the city around you.

Scaling new heights over 45 levels, the architecture is sleek with towering vertical gardens, glass facades providing panoramic river views out to the mountains and surrounding Sydney. Built using the highest quality materials and adhering to high standards of energy and water efficiency, residences consider the environmental footprint while providing an uncompromising level of space and comfort.

Nowhere else can you find a setting quite like this: a quiet, purely residential community with lush resort style amenities for the ultimate in health and wellness, natural landscapes, surrounded by water, and a stimulating cosmopolitan center nearby. You can retreat into your peaceful surroundings or venture a few steps beyond and engage with the excitement around you.









Artist Impression





Built for the way  
you live today.





At Oasis nature becomes a part of your everyday and the amenity is centered around providing a well-balanced life. An expansive, swimming pool with private cabanas, a splash pad for children and a calming spa are extensions of your home. A lush tropical garden where you can meditate and reconnect with the natural world enhance your everyday. The poolside grille is a casual place for entertaining or alfresco dining with family and friends. The beautifully landscaped gardens are the perfect place to read the paper while the family and pets play on the lawn.











Artist Impression





Extraordinary  
design will  
change your life.





The dramatic views from glass walled Oasis are framed by a distinctive, modern design providing light and scale. The apartment interior colour palette is natural and refined, the open living spaces with high ceilings and full-height windows maximise light and views throughout the day.

Entry doors are fitted with smart digital hardware and European style stainless steel handles leading you into large format Carrara porcelain tile floors. Aluminium, double glazed glass windows and vertical roll blinds throughout provide quiet comfort, privacy and seclusion from the outside world.

Bedrooms are fitted with 100% wool textured loop pile. Built in robes are timber look laminate with a mirrored door and matching laminate shelving. Reverse cycle air conditioning keeps your home warm in winter and cool in summer.

Smart intercom with colour video provides security allowing you to manage visitors with confidence. The built in MyHome technology also allows you direct access to our helpful customer services team who assist with prompt and efficient after settlement needs.

Every centimeter of the layout has been thoughtfully utilised and all the comfort and conveniences you require to feel very at home are considered – a hallmark of Billbergia properties.









Artist Impression



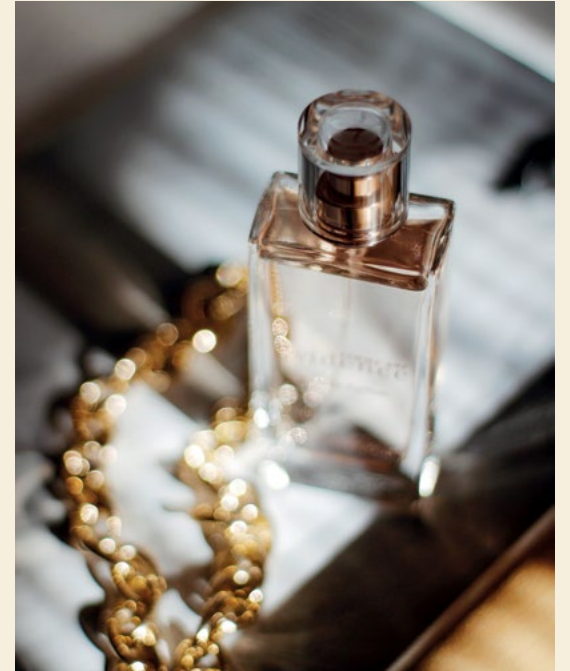


The bright and spacious expertly crafted kitchen complements both eastern and western culinary styles. The generous island bench, wrapped in a marble-inspired reconstituted stone is a key design feature whilst the rest of the joinery blends with the architecture. The undermount stainless steel kitchen sink and European design level mixer kitchen taps provide long lasting quality.

Bosch appliances have been selected for their efficient, powerful and reliable service that will make life easier in your home including a fully integrated dishwasher, multifunction stainless steel oven, black gloss 4 burner stove with wok burner controls and frameless black glass microwave.







A haven for body and mind, the luxurious bathroom is designed to help you retreat from urban distractions, recharging yourself in your personal space.

All bathrooms are outfitted with metal single lever tapware and are clad in rich reconstituted stone surfaces. Thoughtful details like the frameless glass shower panel and concealed dual flush cistern toilet suite provide a discreet seamless design.





Artist Impression







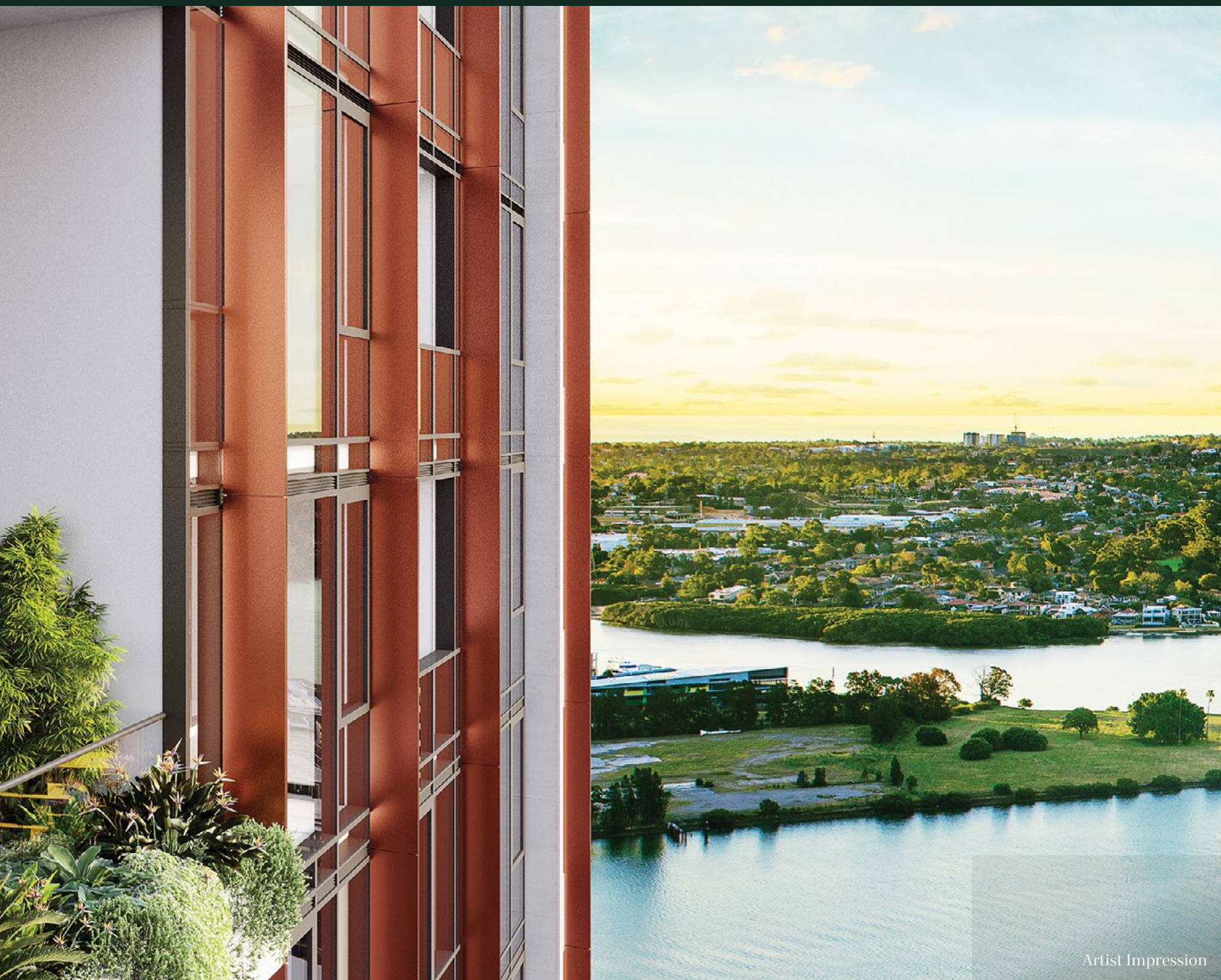


A vibrant,  
expansive  
pocket.

Designed to be a lush, green retreat in the open air, the rooftop provides stunning panoramic views to be enjoyed alone or while entertaining.

Featuring areas designed for lounging, dining and barbecuing, there's more than just an extraordinary view. Socialise and take in the landscape on a communal table, or even use as your workspace to brighten the day.





The pocket park provides another retreat within the mid-levels of Oasis. With a state-of-the-art cinema where you can stream your favourite movies, or step out to the outdoor entertaining area, a sanctuary-like space perfectly positioned to gather with friends, family, and neighbours.



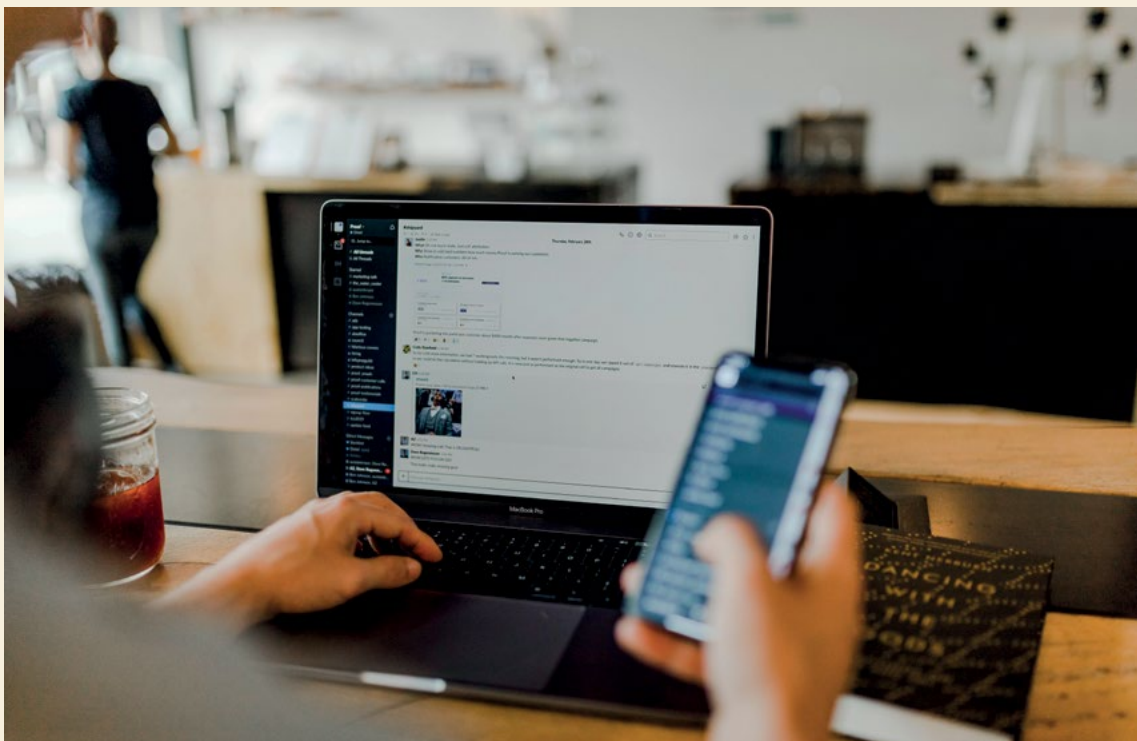




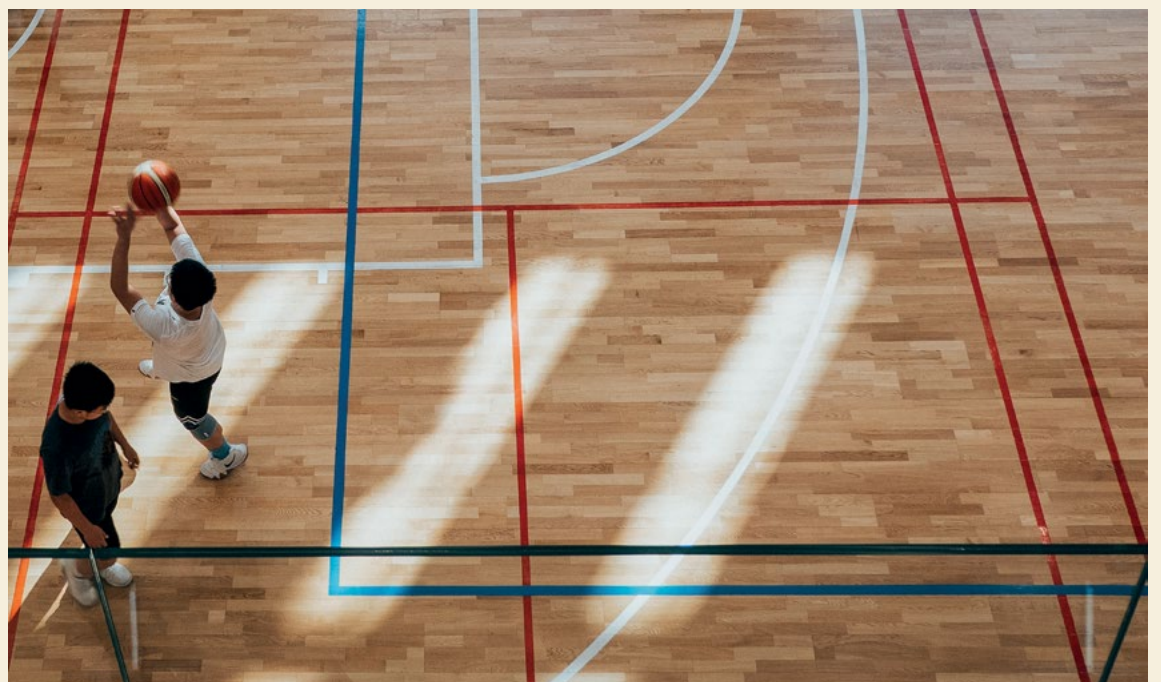


---

# The Recreation Centre.



The 9100 sqm state of the art Recreation Centre provides a health and wellbeing space to detach from the narrative of daily life. The centre features a gymnastics area, cafe, expansive community coworking and quiet areas, a health club and spaces for active play such as badminton. Each area has a specific focus, encompassing wellness, personal growth, self-care and more, encouraging a peaceful mind, a strong and healthy body and a meeting place for socialising.





# Rhodes Central Shopping Centre.



Rhodes Central celebrates a fusion of cultures, cuisines and colour in the heart of Rhodes. From early morning cafes and shopping until late night dining, Rhodes Central is a destination for business, culture, dining and entertainment. It is home to more than 55 shops and services including a Woolworths supermarket, health and wellness services, plus Bamboo Lane, a destination dining precinct that channels Asian food markets.







Dining

- Ho'me Kids Café
- Auvers Café & Bar
- BBQ Master
- Viwon
- Cho Express
- CoCo Tea
- Ma La Tang
- Hong Kong Street Food
- Juice Topia
- Kim Jinsa Korean BBQ
- Komatsu
- Leafe Café & Co
- Taste of Shanghai
- Madam Pho
- Mao Po
- McDonalds
- Roll n Sushi
- Sharetea
- Snow Blossom
- Spicy Joint Hot Pot
- Tasty Towns Gelato
- Sushi Don Junction
- Sugar Hill
- Two Peck Crispy Chicken
- Yasaka Ramen

Fashion & Accessories

- Baby Orance
- Tom's Project

Fresh Food

- BWS
- Costi Seafoods
- HeyMeat Butcher
- LAB Bakery Café
- Rhodes Bakery
- Top Impression Bakery
- Yangga Korean Deli
- Woolworths
- Zetciti

Hair & Beauty

- Barber Industries
- Delta Hair Studio
- FancyLife Cosmetics
- Hair by Selby
- Lunula Nails & Beauty

Health & Wellness

- Cincotta Chemist
- Function PCP
- Miyongs Skin Clinic
- Natural Power Massage
- Optimal Health Medical Centre
- Rhodes Central Dental
- Rhodes Optometry
- X-Active Gym

Home & Gifts

- Snowbloom Florist
- N2E Technology

Petcare

- Bayside Animal Hospital
- QPet



Living  
life to the  
fullest.



Rhodes Railway Station



Concord Golf Course



ANZ Stadium



Bennelong Bridge





Mill Park



Wentworth Common

Rhodes has a celebrated past and a progressive present – known for its restaurants, shopping, parklands, boutiques and rich architecture. Rhodes is one of Sydney's fastest growing areas having been transformed into major residential, retail and business centre providing a hip and happening metropolitan hub.





Oliveto



Bare Witness





Bicentennial Park

Only 16 kilometers from Sydney CBD – or just 22 minutes by train – in the geographical centre of Sydney. Rhodes is a very well planned neighbourhood with excellent access to transport, education, parks and open space, playgrounds, modern conveniences and is very clean and well manicured. Everything is at your finger tips.



Leaf Café



Rhodes Foreshore Park



Shipwreck Lookout

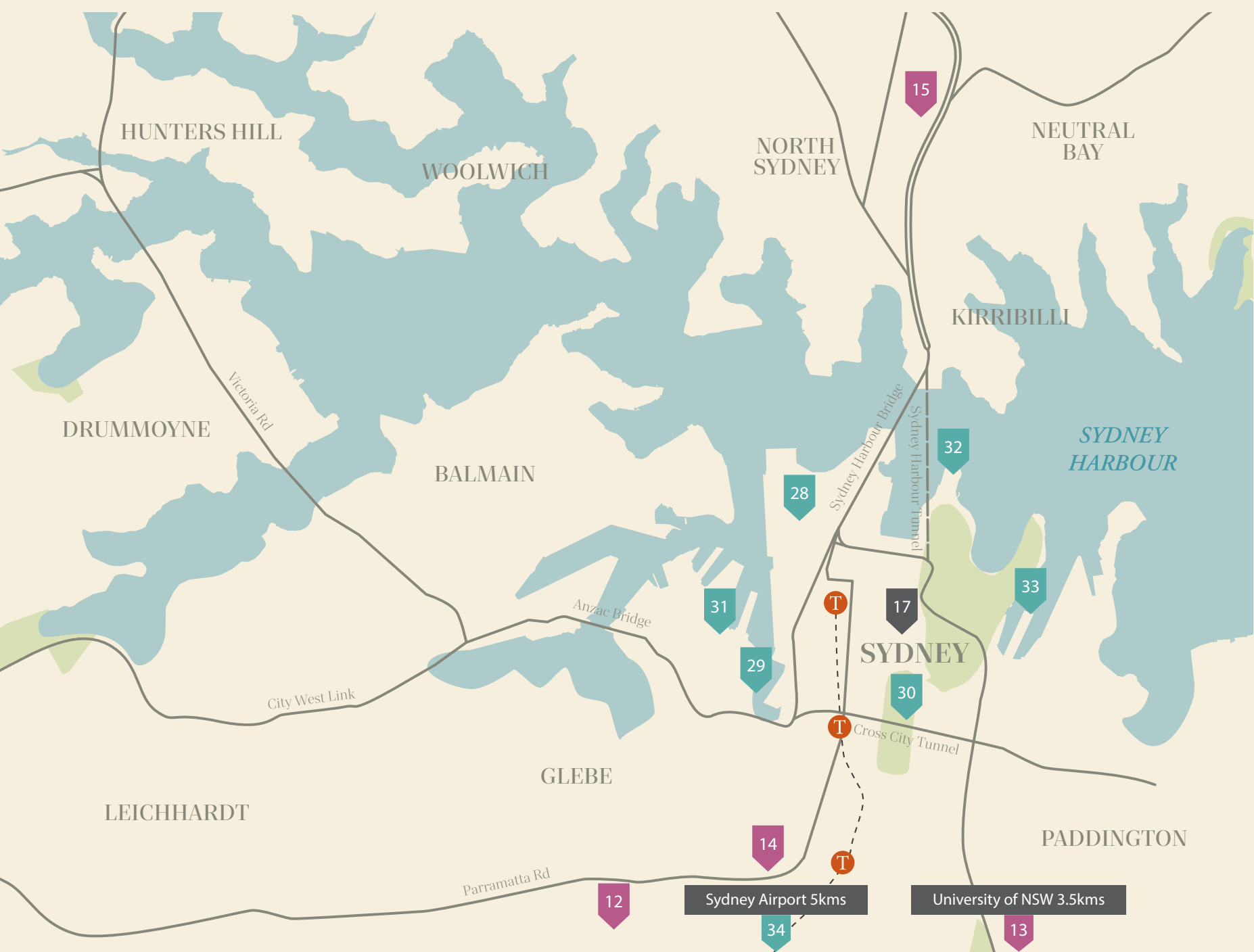






# At the centre of it all.

<b>Health</b>	11. St Michael's Co-ed Catholic Primary School	21. Massy Park Golf Course	<b>Points of Interest</b>
1. Ryde Hospital	12. University of Sydney	22. Barnwell Park Golf Course	28. Barangaroo
2. St John of God Burwood	13. University of NSW	23. Ryde - Parramatta Gold Course	29. Darling Harbour
3. Westmead Hospital	14. UTS	24. Sydney Olympic Park Aquatic Centre	30. Hyde Park
<b>Childcare &amp; Education</b>	15. Wenona Independent Girls School	<b>Retail and Entertainment</b>	31. Star Casino
4. Homebush Boys High School	<b>Employment</b>	25. DFO Homebush	32. Sydney Opera House
5. James Ruse Agricultural High School	16. Olympic Park Business District	26. Event Cinema in Top Ryde	33. Woolloomooloo Bay
6. Macquarie University	17. Sydney CBD	27. Sydney Olympic Park	34. Sydney Airport
7. Meriden Anglican School for Girls	<b>Parks &amp; Recreation</b>	a. Sydney Showground	35. Parramatta (Sydney's Second CBD)
8. MLC School	18. Bicentennial Park	b. Sports Centre	
9. Strathfield Girls High School	19. Millennium Parklands	c. Sydney International Aquatic Centre	
10. St Patrick's Catholic School for Boys	20. Concord Golf Course	d. ANZ Stadium	
		e. Qudos Bank Arena	





# SJB

## ARCHITECTURE

SJB make cities, town and buildings better places to live. As lead architects on Rhodes Central, their ambition was to create an inspiring masterplan which seeks to embrace a sense of community as its core design principal. Rhodes Central provides excellent community amenity through outdoor open spaces, a bold commitment to public art, interesting walkways engaging with marketplace retail areas. The heliostat provides natural sunlight to outdoor spaces. The tower designs offer a variety of living typologies and uses catering to a diverse and emerging demographic resulting in a vibrant mixed-use precinct.



# Urbis

## URBAN DESIGN

Urbis has had a long association with Billbergia. Master planning of Rhodes Central commenced in 2010. A Concept Plan was developed to include residential living, a market town village centre involving an interconnected series of laneways and public spaces with retail and commercial uses, opposite the Rhodes train station.

A unique feature of the project is a heliostat architectural feature on one of the towers, which will guide sunlight to Rhodes town square. The landscape architecture team designed beautiful outdoor spaces for both day and nighttime. Large open lawn areas, BBQ and outdoor seating, lush planning with a mixture of small and large trees providing shade, colour and greenery in the gardens.





Artist Impression

# Billbergia

## DEVELOPER

Billbergia has been creating communities for more than 33 years. We take pride in our developments and our customer's satisfaction is at the centre of everything we do. It is this passion which continually drives us to create better places whilst maintaining the highest quality and standards.

Billbergia has an exceptional track record in delivering award-winning, high-quality residentialHomes. We understand residences are treasures to be valued and enjoyed throughout your lifetime but also across future generations. Not only will you benefit from comfortable living in your own home, but there is potential to appreciate financial returns in years to come.

Creating communities requires a shared set of values, vision and purpose. At Billbergia we value partnership, legacy and social responsibility. Applying these values to proven placemaking principals results in the creation of great places where people want to live, work and play.



---

# Sustainability.

When it comes to sustainability, Billbergia ensures our actions are measurable and meaningful. These include the environmental performance of each property, support for the preservation of natural and cultural heritage, and enhancing social and economic benefits to local communities.

We are dedicated to strengthening the fabric of local culture and community and work with suppliers who share this commitment. Concrete efforts to reduce consumption, and support communities and ecosystems.

In all development, design and construction, Billbergia acts responsibly to measure and minimize our carbon footprint and impact on the environment, all through active management of energy, water, waste, biodiversity, purchasing and chemicals usage. All developments set goals to reduce carbon emissions.

# Legacy.

Aware that all decisions and actions matter not just for today, but also for the many tomorrows, as legacy makers for future generations, Billbergia fosters strong relationships with local communities, recognising that everyone is part of a global community, with collective responsibility for the health and well-being of each other and the environment. Investments are made in a manner that supports equal access to an improved quality of life for all.

Disclaimer: Whilst endeavours have been taken to ensure the content of this website is correct at the time of publishing, Thirty Four Walker Street Pty Limited and its related entities and corporations and their agents do not warrant the accuracy of any information, documents, plans, images or illustrations included in this website and reserve the right to change the content of the website at any time. Plans, images, diagrams or artists impressions may be conceptual and indicative only. The information, images, illustrations, documents and plans on this web site will not form part of any contract for sale, agreement for lease or lease. Interested parties must only rely on the information and terms in the contract for sale for the property.







