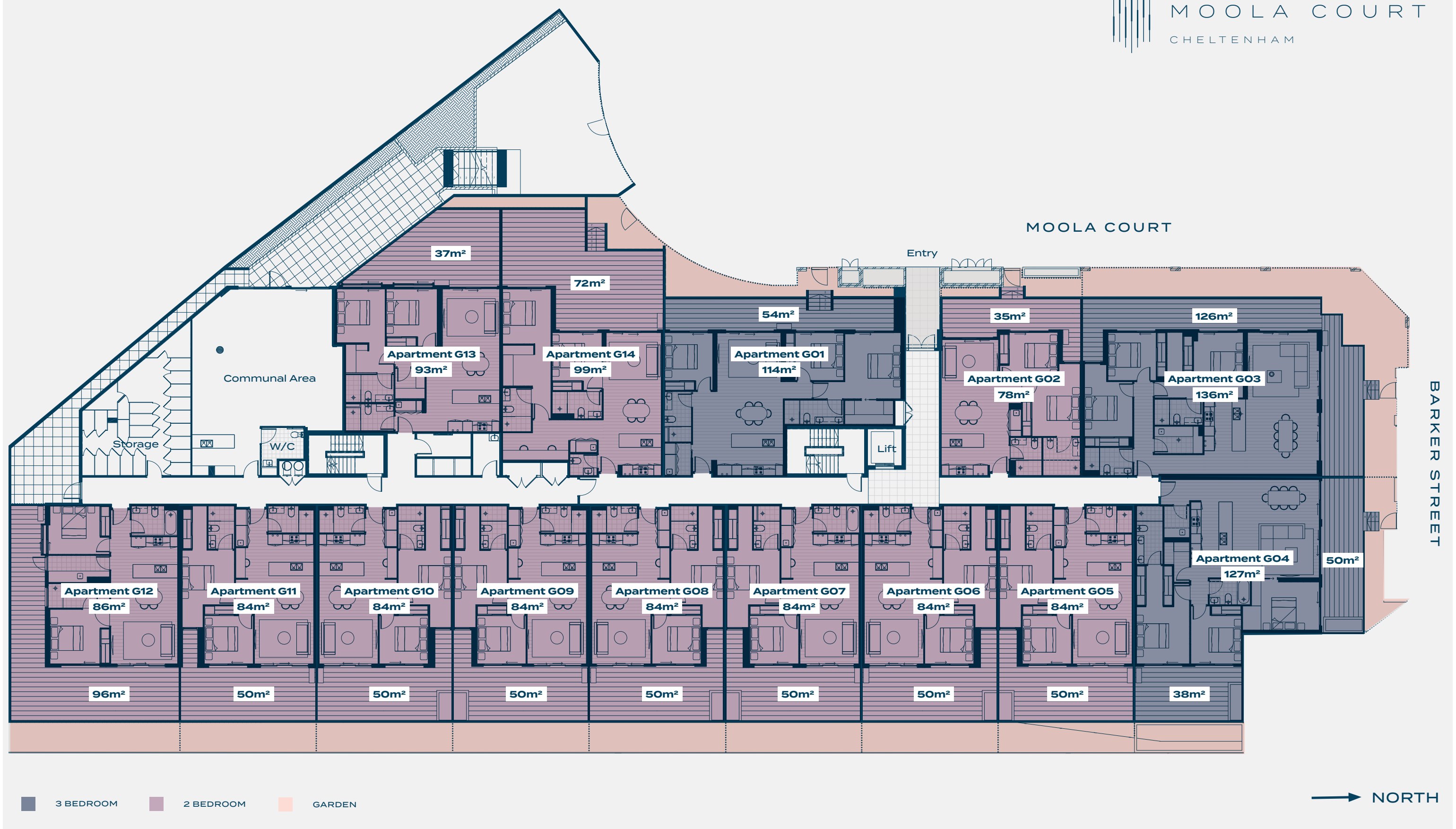


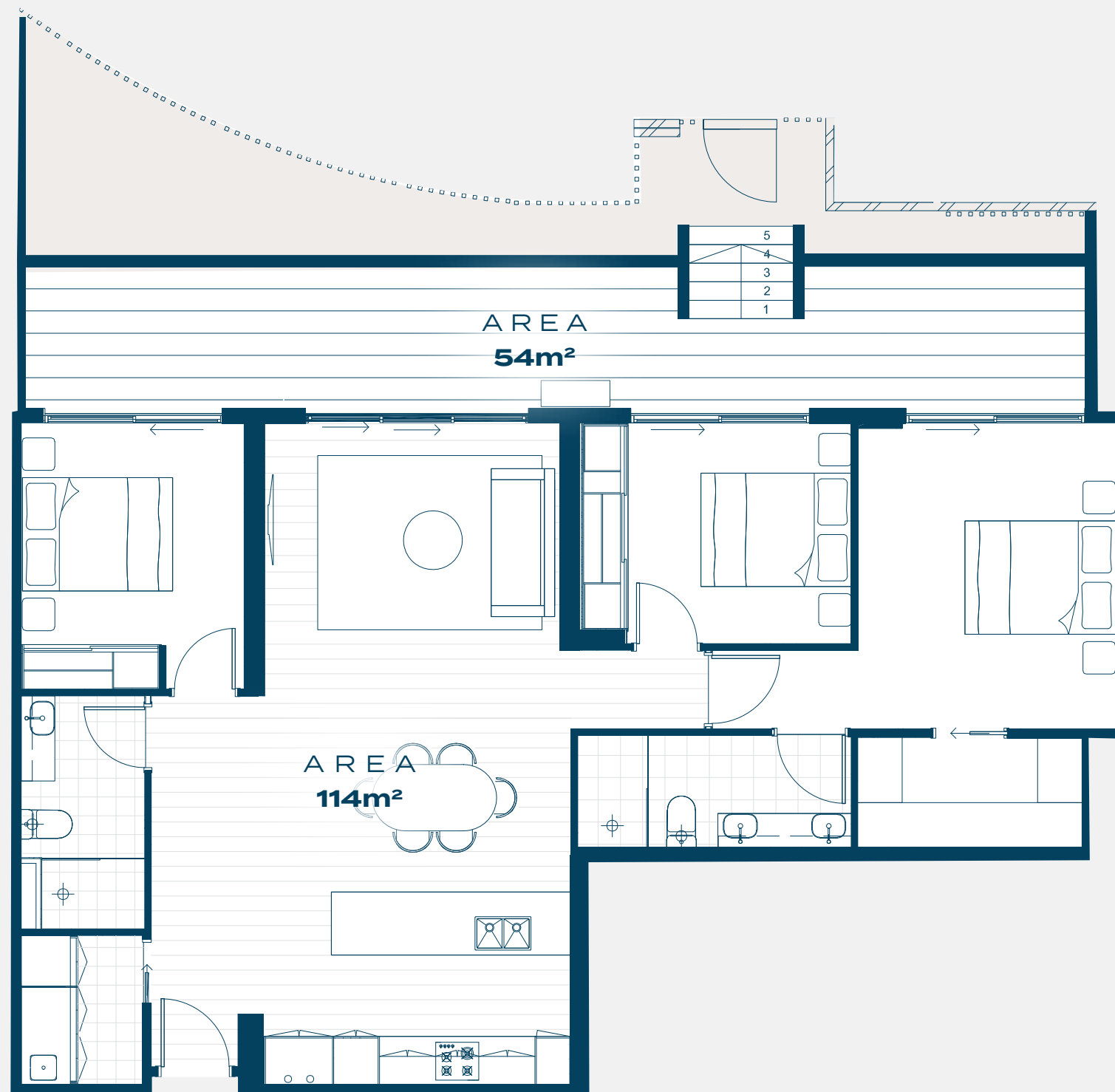
MOOLA COURT

CHEL TENHAM



GROUND

This floorplan is for marketing purposes only. The information contained in this floorplan has been produced in good faith with due care. This floorplan has been measured in accordance with the Property Council of Australia method of measurement for residential property.



APARTMENT G01

INTERNAL
EXTERNAL

114M²
54M²



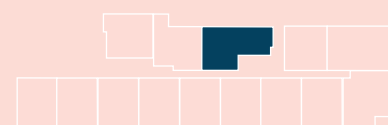
3



2



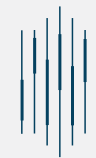
2



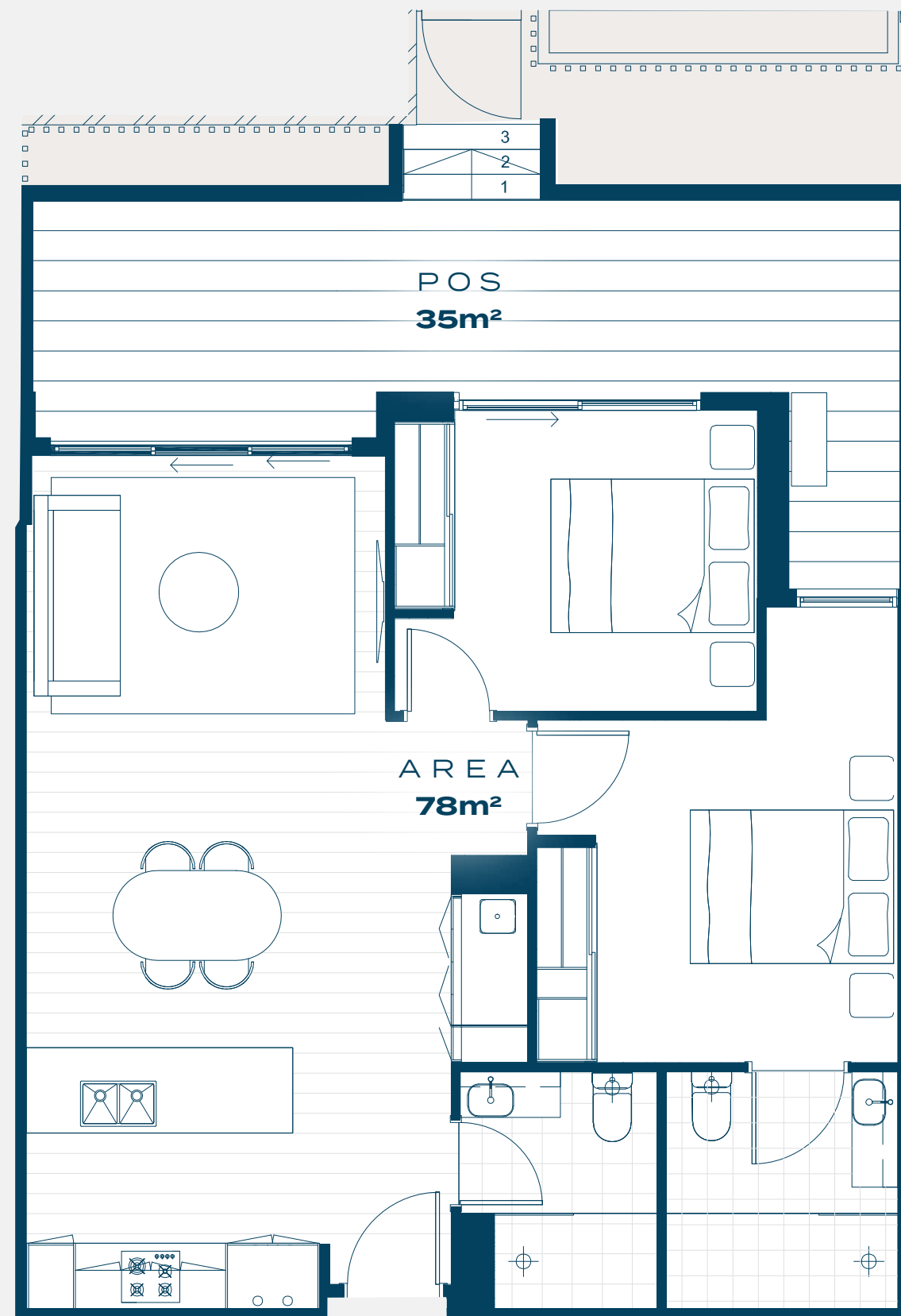
ORIENTATION: WEST

This floorplan is for marketing purposes only. The information contained in this floorplan has been produced in good faith with due care. This floorplan has been measured in accordance with the Property Council of Australia method of measurement for residential property.

PITARD



MOOLA COURT
CHELTENHAM



→ NORTH

APARTMENT G02

INTERNAL
EXTERNAL

78M²
35M²



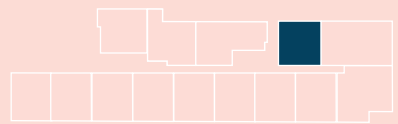
2



2



1



ORIENTATION: WEST

This floorplan is for marketing purposes only. The information contained in this floorplan has been produced in good faith with due care. This floorplan has been measured in accordance with the Property Council of Australia method of measurement for residential property.

PITARD

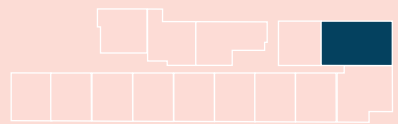


→ NORTH

APARTMENT G03

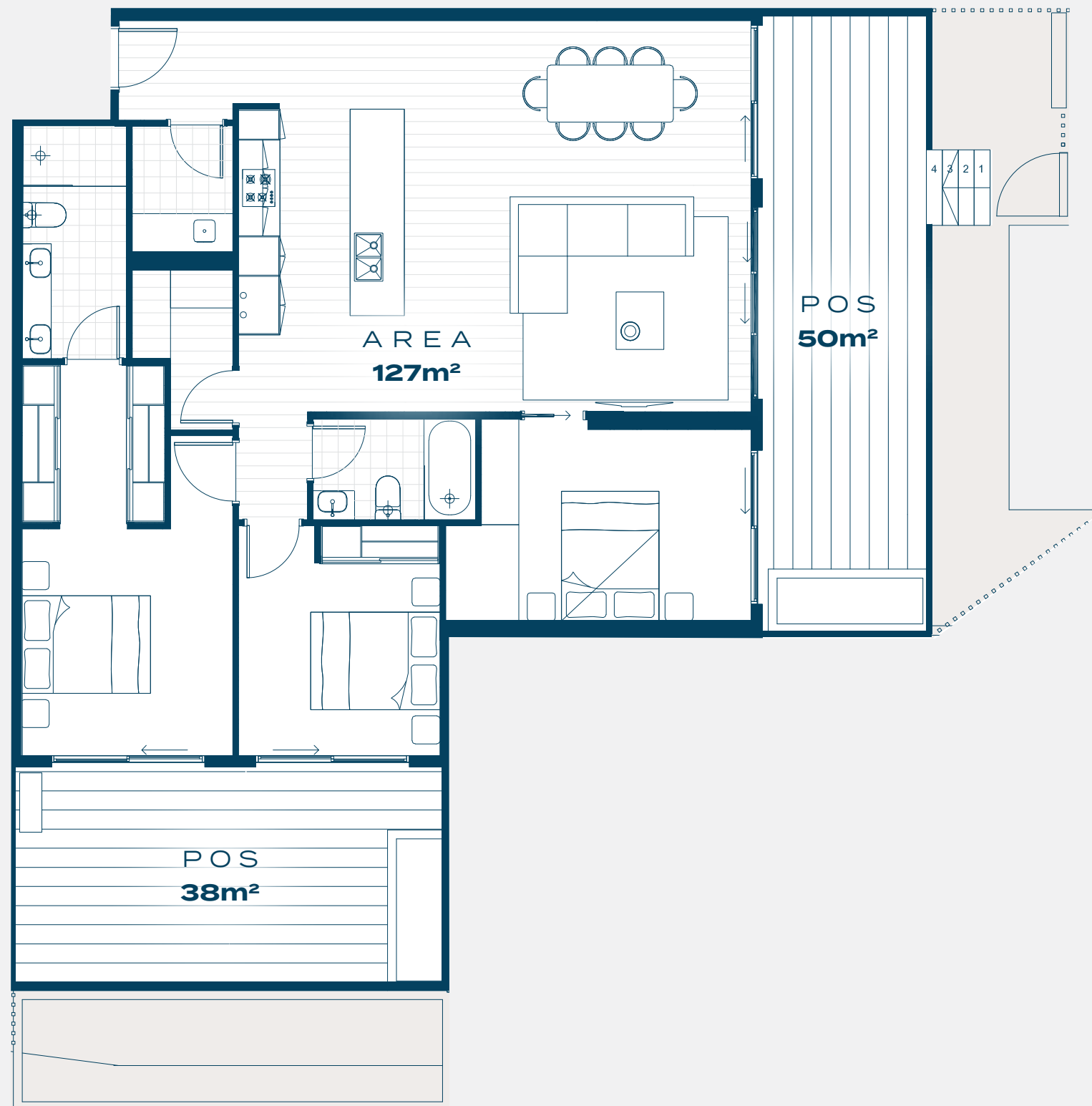
INTERNAL 136M²
EXTERNAL 126M²

 3
 2
 2


ORIENTATION: NORTH WEST

This floorplan is for marketing purposes only. The information contained in this floorplan has been produced in good faith with due care. This floorplan has been measured in accordance with the Property Council of Australia method of measurement for residential property.

PITARD



APARTMENT G04

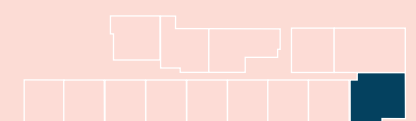
INTERNAL
EXTERNAL

127M²
88M²


3

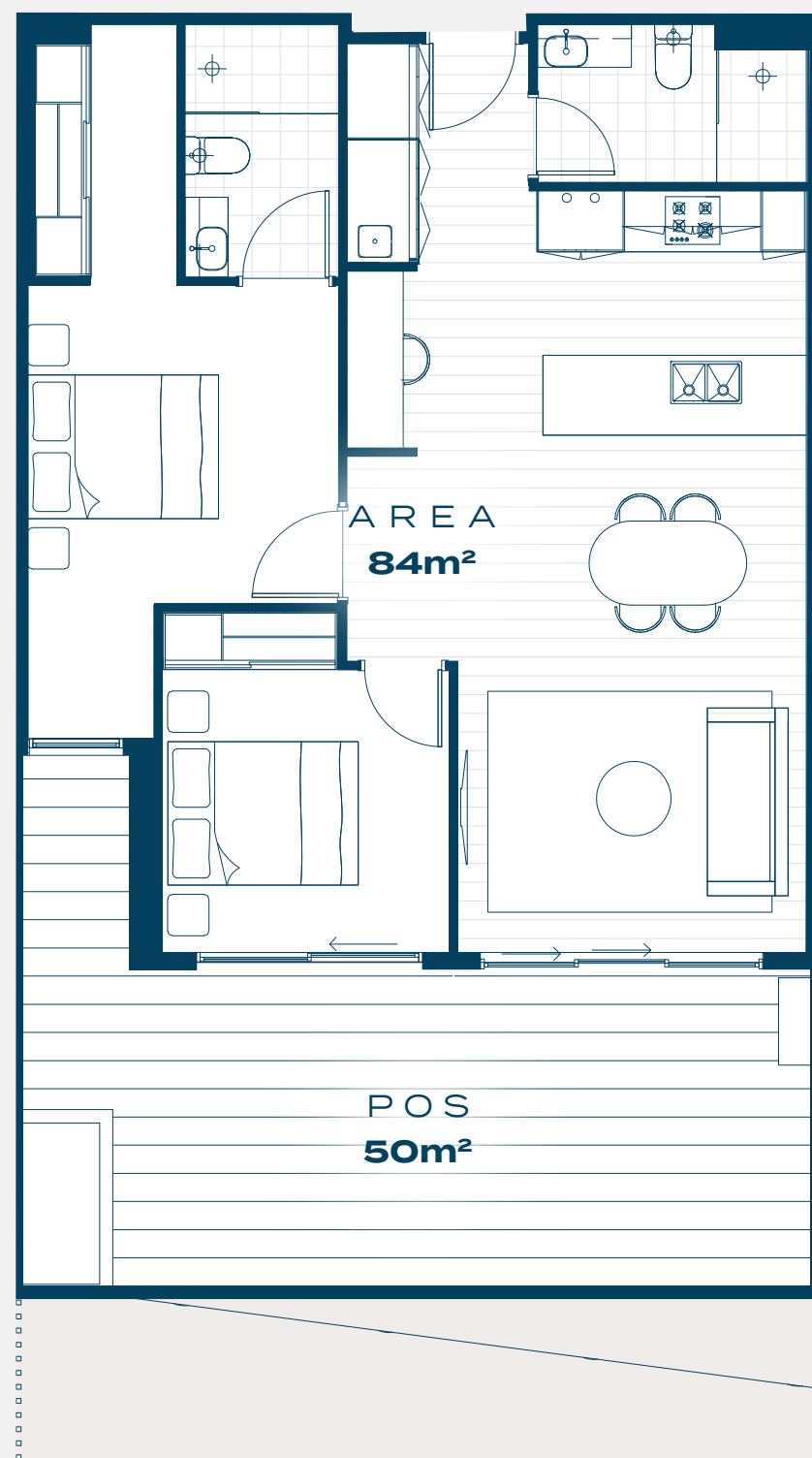

2


2


ORIENTATION: NORTH EAST

This floorplan is for marketing purposes only. The information contained in this floorplan has been produced in good faith with due care. This floorplan has been measured in accordance with the Property Council of Australia method of measurement for residential property.

PITARD



→ NORTH

APARTMENT G05

INTERNAL
EXTERNAL

84M²
50M²


2

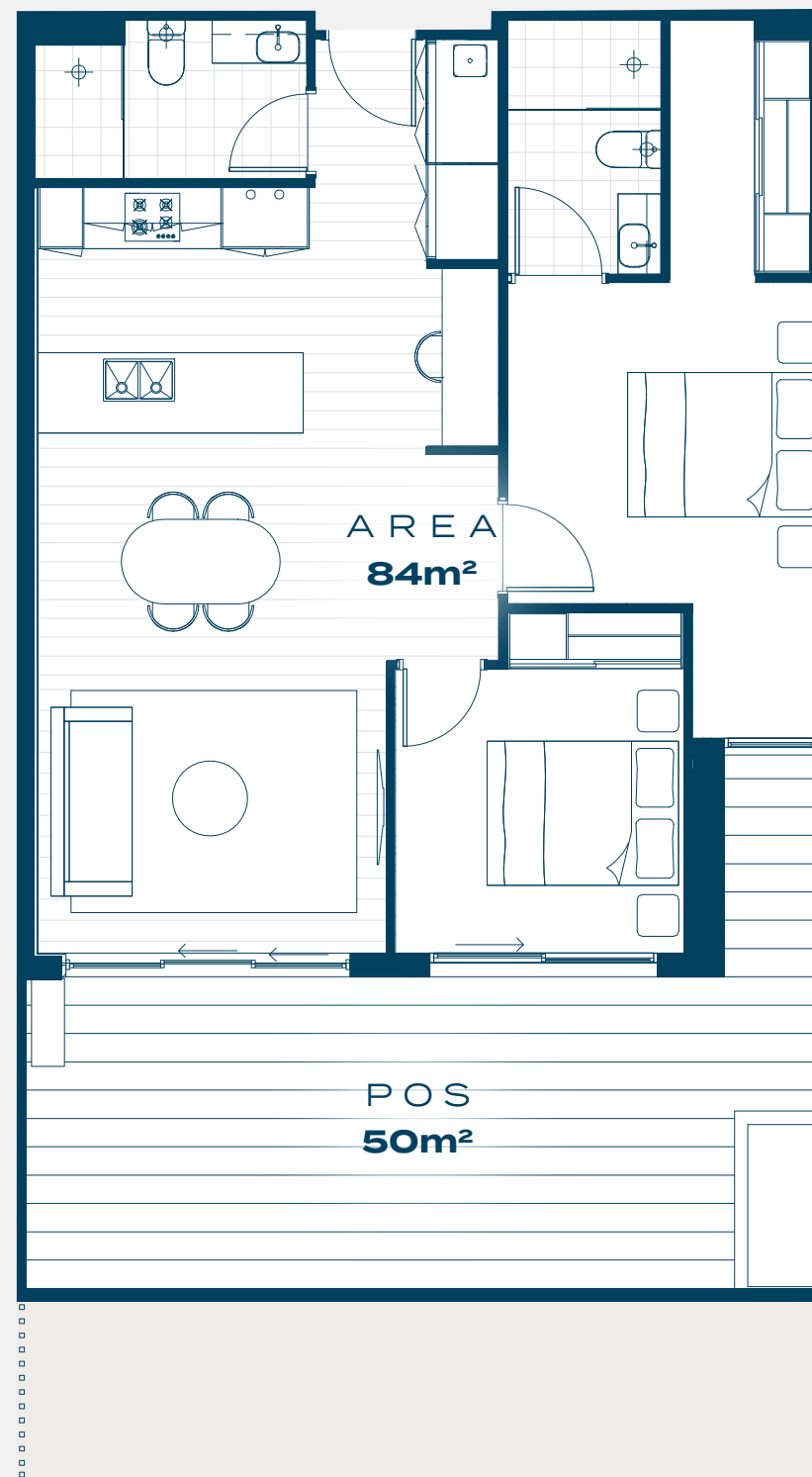

2


1


ORIENTATION: EAST

This floorplan is for marketing purposes only. The information contained in this floorplan has been produced in good faith with due care. This floorplan has been measured in accordance with the Property Council of Australia method of measurement for residential property.

PITARD

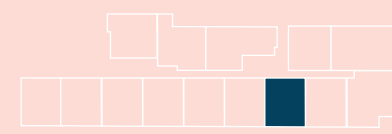


→ NORTH

APARTMENT G06

INTERNAL
EXTERNAL

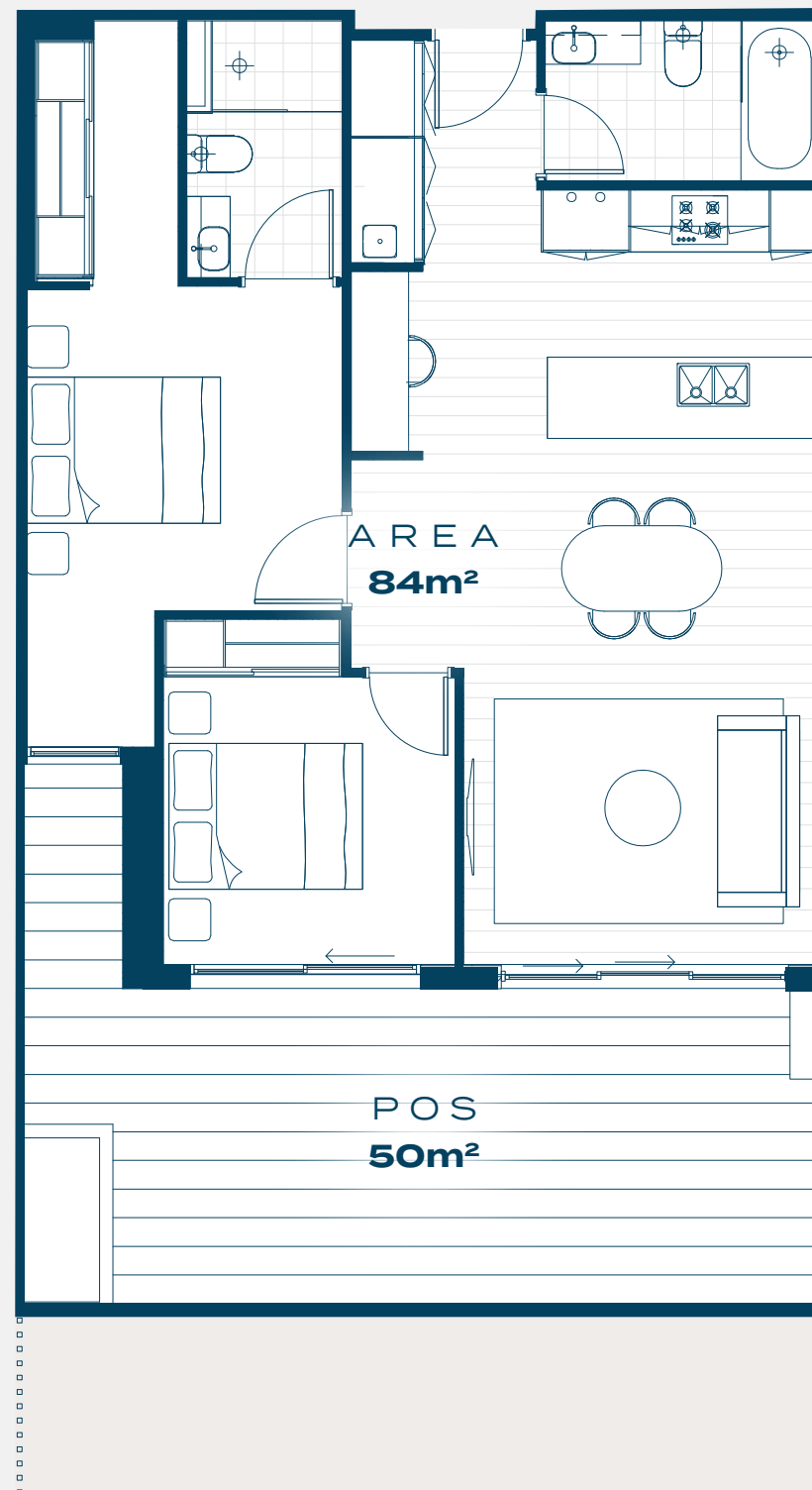
84M²
50M²



ORIENTATION: EAST

This floorplan is for marketing purposes only. The information contained in this floorplan has been produced in good faith with due care. This floorplan has been measured in accordance with the Property Council of Australia method of measurement for residential property.

PITARD



→ NORTH

APARTMENT G07

INTERNAL
EXTERNAL

84M²
50M²



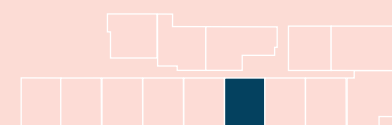
2



2



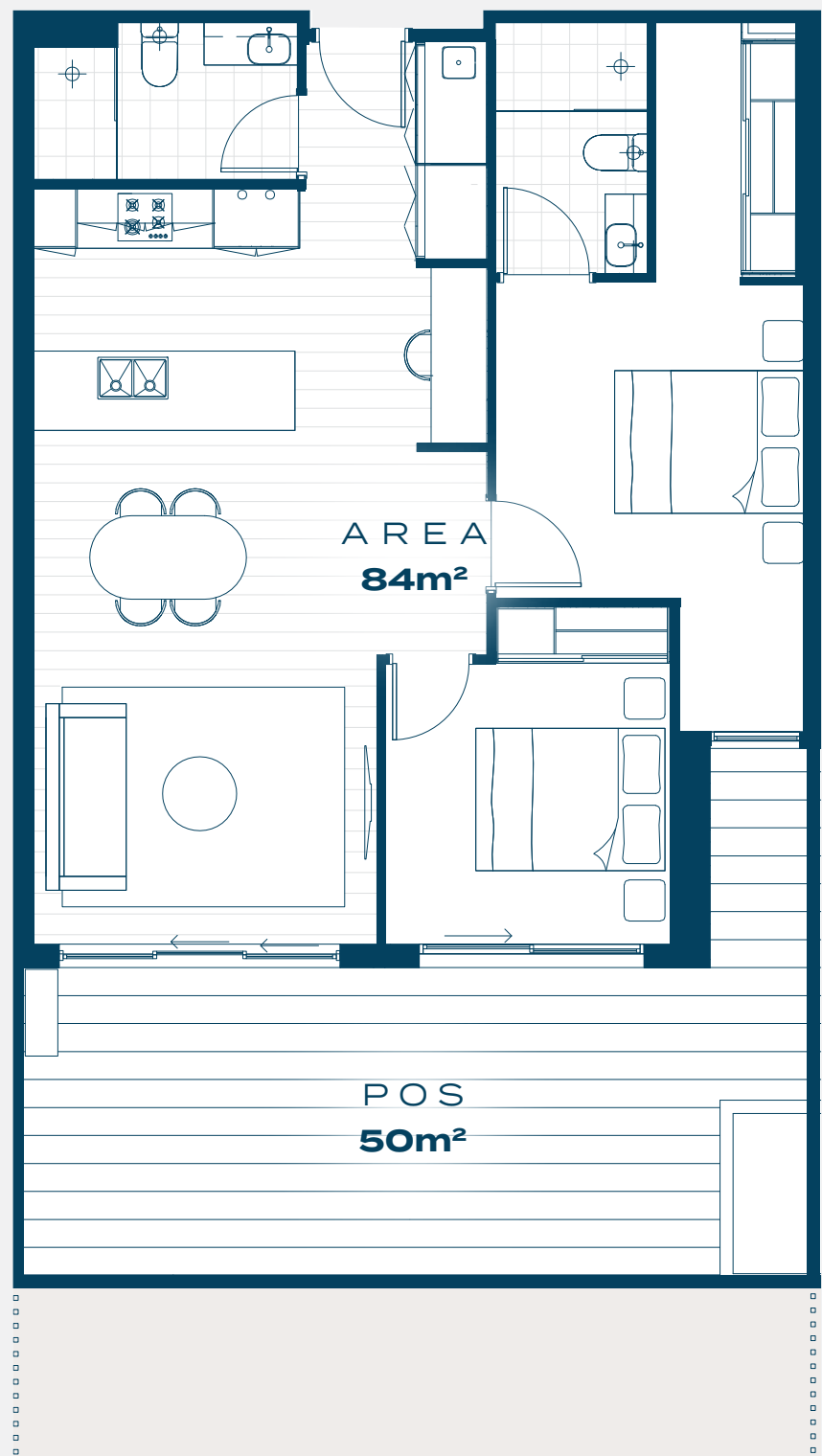
1



ORIENTATION: EAST

This floorplan is for marketing purposes only. The information contained in this floorplan has been produced in good faith with due care. This floorplan has been measured in accordance with the Property Council of Australia method of measurement for residential property.

PITARD



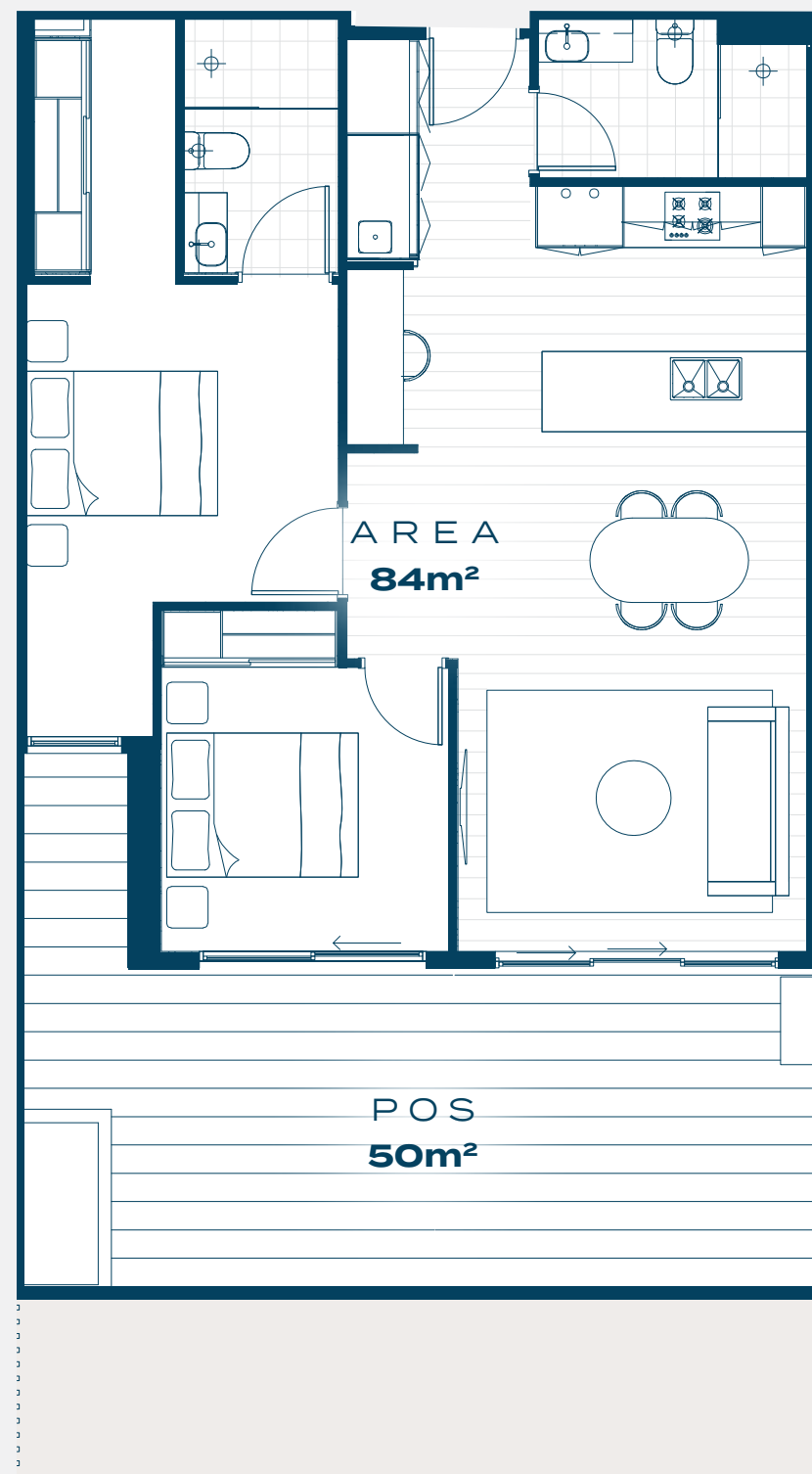
APARTMENT G08

INTERNAL
EXTERNAL

84M²
50M²



This floorplan is for marketing purposes only. The information contained in this floorplan has been produced in good faith with due care. This floorplan has been measured in accordance with the Property Council of Australia method of measurement for residential property.



→ NORTH

APARTMENT G09

INTERNAL
EXTERNAL

84M²
50M²



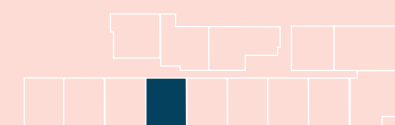
2



2



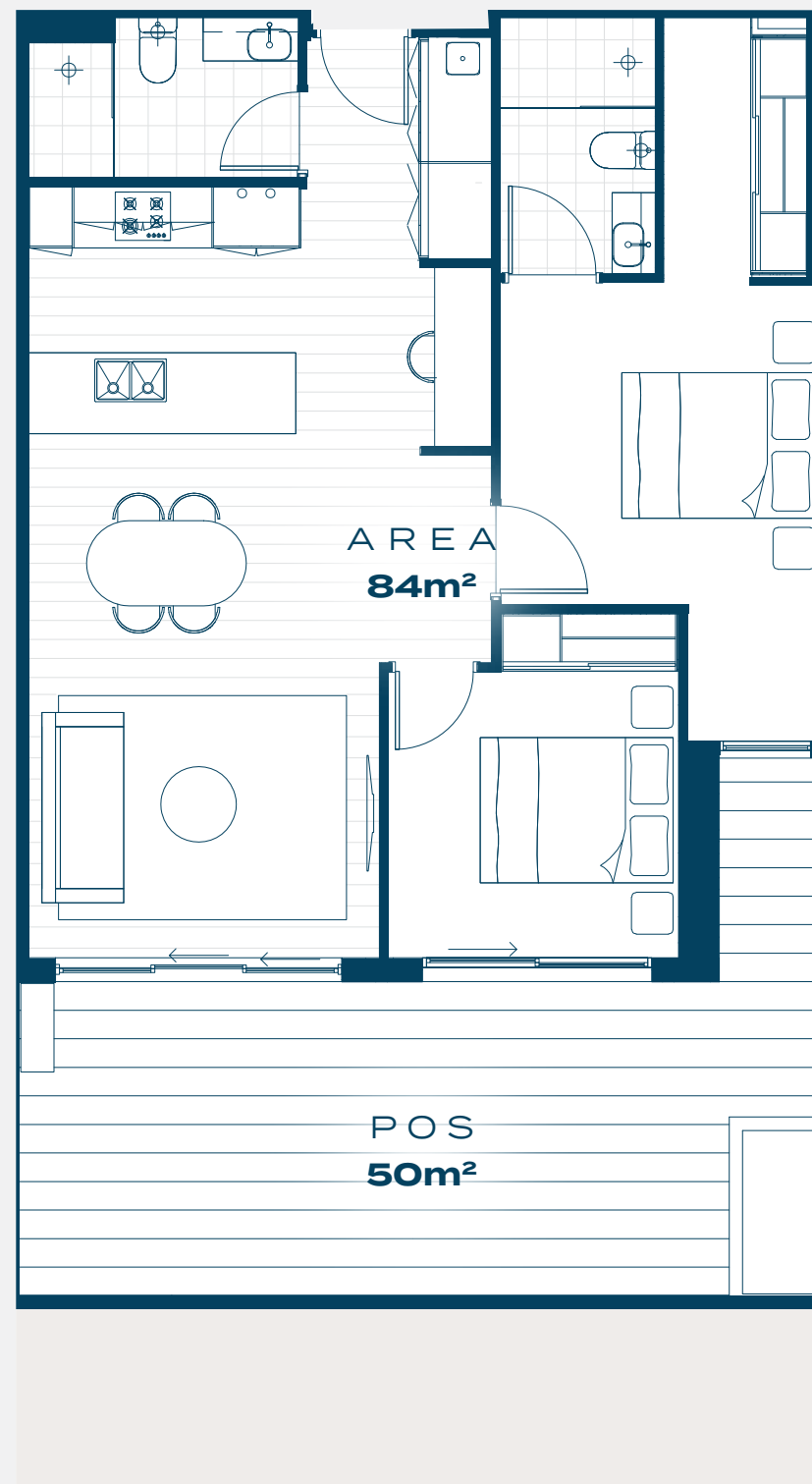
1



ORIENTATION: EAST

This floorplan is for marketing purposes only. The information contained in this floorplan has been produced in good faith with due care. This floorplan has been measured in accordance with the Property Council of Australia method of measurement for residential property.

PITARD



→ NORTH

APARTMENT G10

INTERNAL
EXTERNAL

84M²
50M²


2

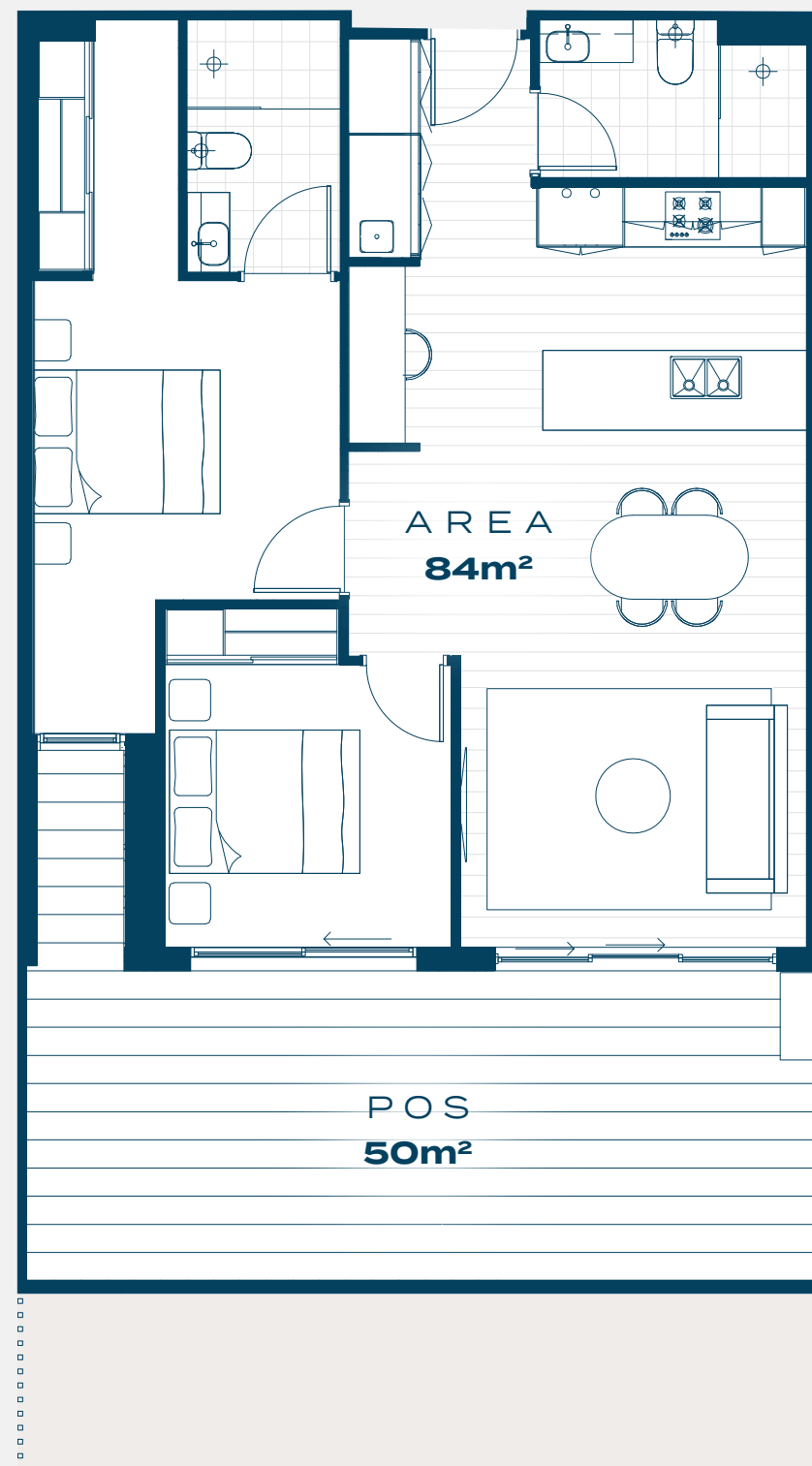

2


1


ORIENTATION: EAST

This floorplan is for marketing purposes only.
The information contained in this floorplan has
been produced in good faith with due care. This
floorplan has been measured in accordance
with the Property Council of Australia method of
measurement for residential property.

PITARD



→ NORTH

APARTMENT G11

INTERNAL
EXTERNAL

84M²
50M²



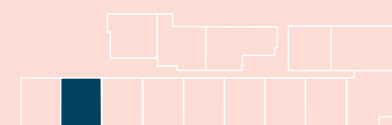
2



2



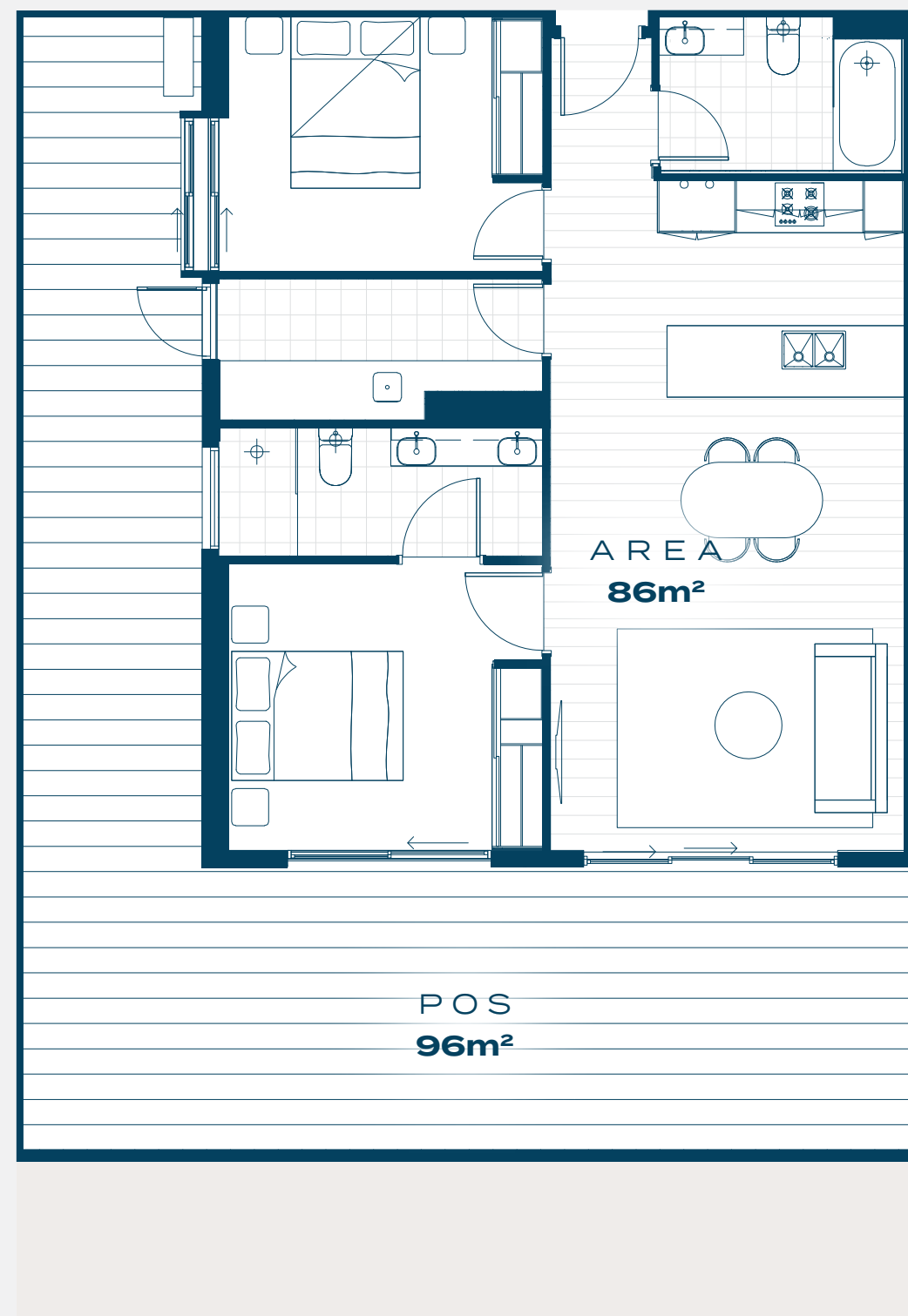
1



ORIENTATION: EAST

This floorplan is for marketing purposes only. The information contained in this floorplan has been produced in good faith with due care. This floorplan has been measured in accordance with the Property Council of Australia method of measurement for residential property.

PITARD



→ NORTH

APARTMENT G12

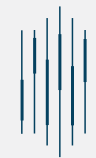
INTERNAL 86M²
EXTERNAL 96M²

2 2 1

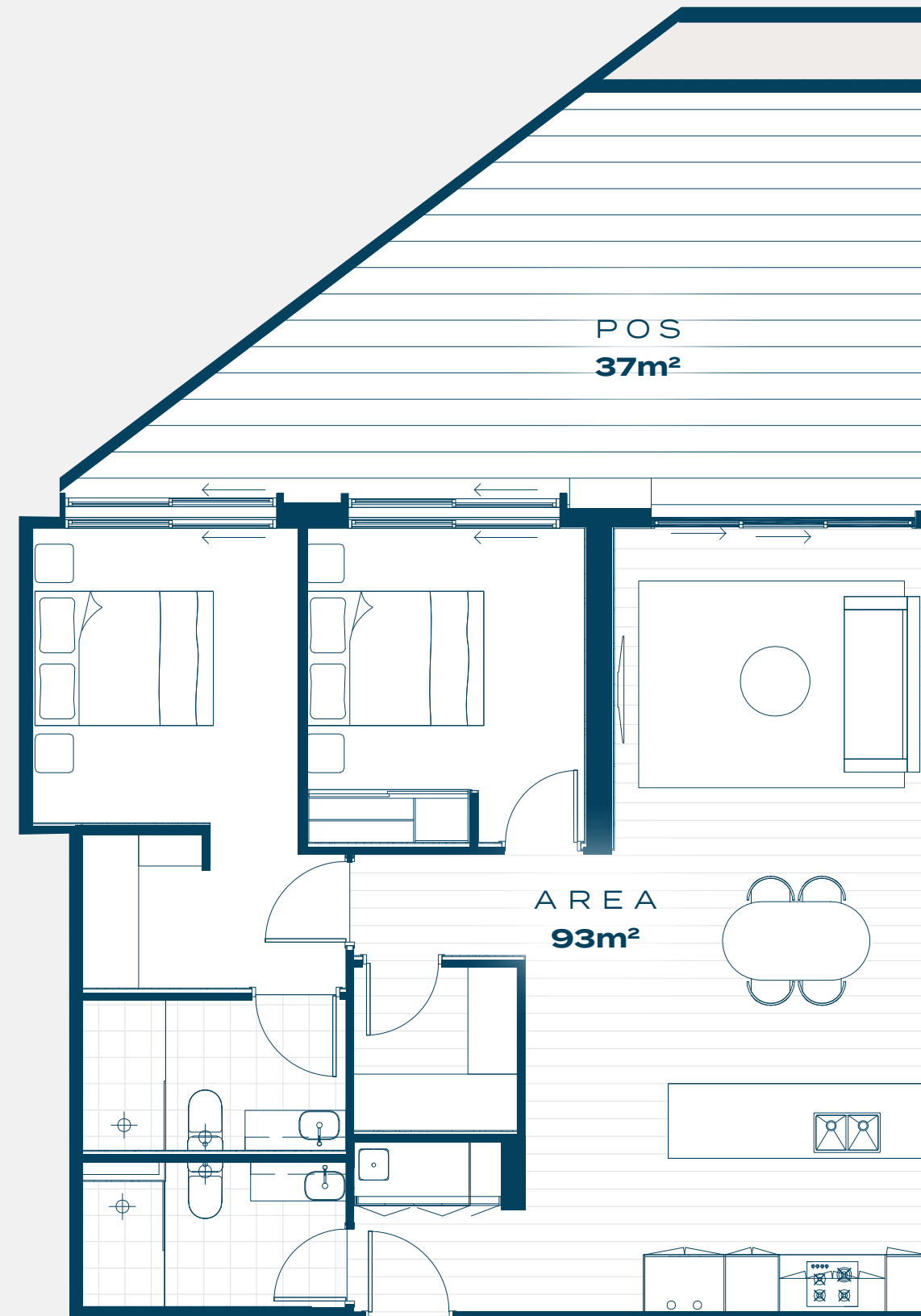
ORIENTATION: SOUTH EAST

This floorplan is for marketing purposes only. The information contained in this floorplan has been produced in good faith with due care. This floorplan has been measured in accordance with the Property Council of Australia method of measurement for residential property.

PITARD



MOOLA COURT
CHELTENHAM



→ NORTH

APARTMENT G13

INTERNAL
EXTERNAL

93M²
37M²



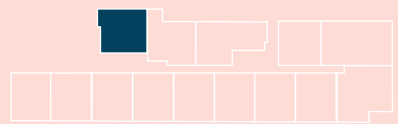
3



2



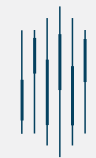
1



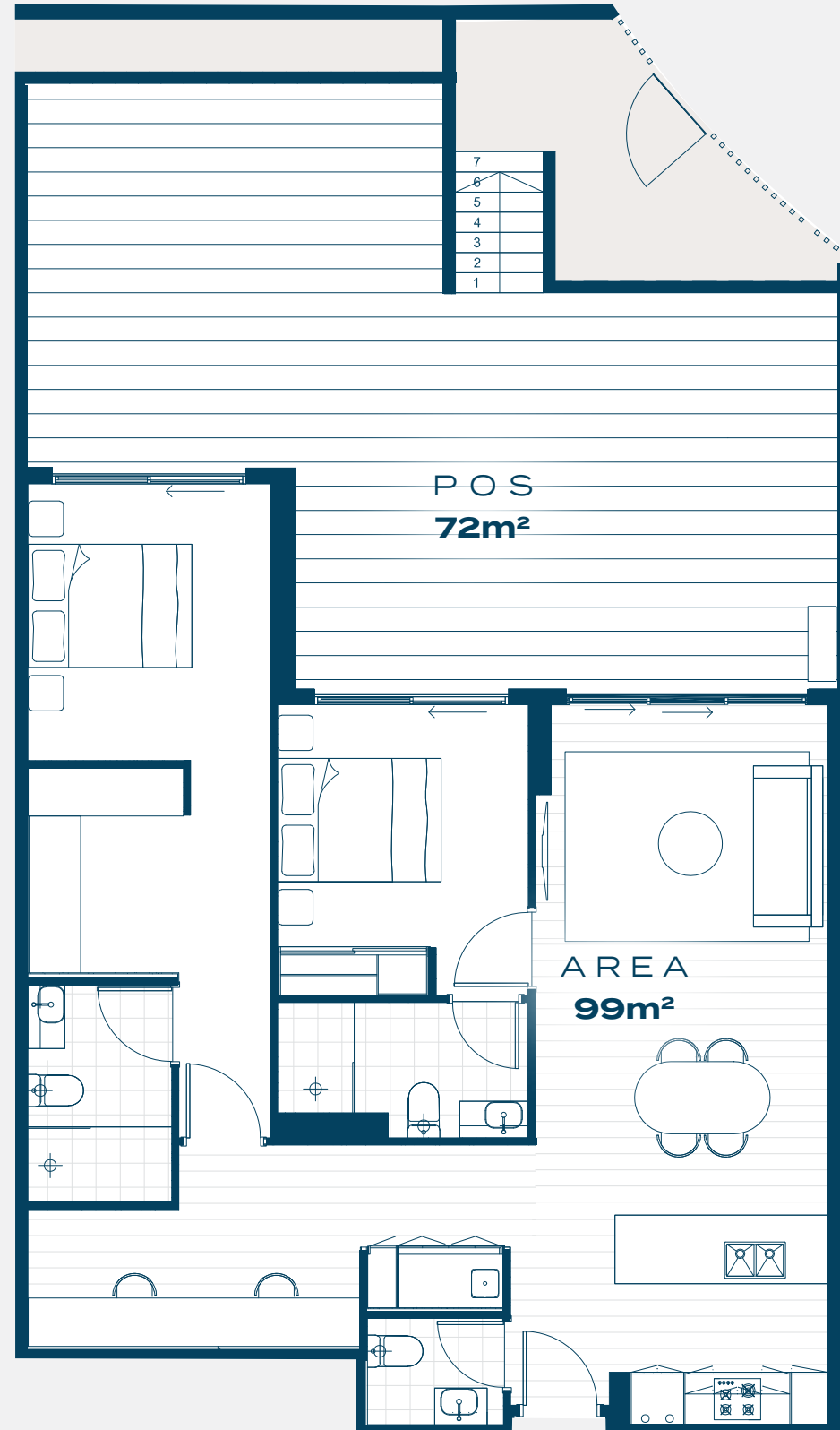
ORIENTATION: WEST

This floorplan is for marketing purposes only.
The information contained in this floorplan has
been produced in good faith with due care. This
floorplan has been measured in accordance
with the Property Council of Australia method of
measurement for residential property.

PITARD



MOOLA COURT
CHELTENHAM



→ NORTH

APARTMENT G14

INTERNAL
EXTERNAL

99M²
72M²



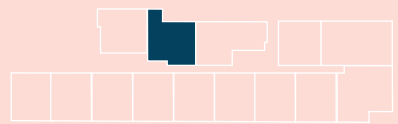
2



2



1



ORIENTATION: WEST

This floorplan is for marketing purposes only.
The information contained in this floorplan has
been produced in good faith with due care. This
floorplan has been measured in accordance
with the Property Council of Australia method of
measurement for residential property.

PITARD