



APT G01

Internal 93m²
External 60m²

  
2 2 1



Orientation: East

This floorplan is for marketing purposes only. The information contained in this floorplan has been produced in good faith with due care. This floorplan has been measured in accordance with the Property Council of Australia method of measurement for residential property.





A P T G 0 2

Internal 102m²
External 104m²

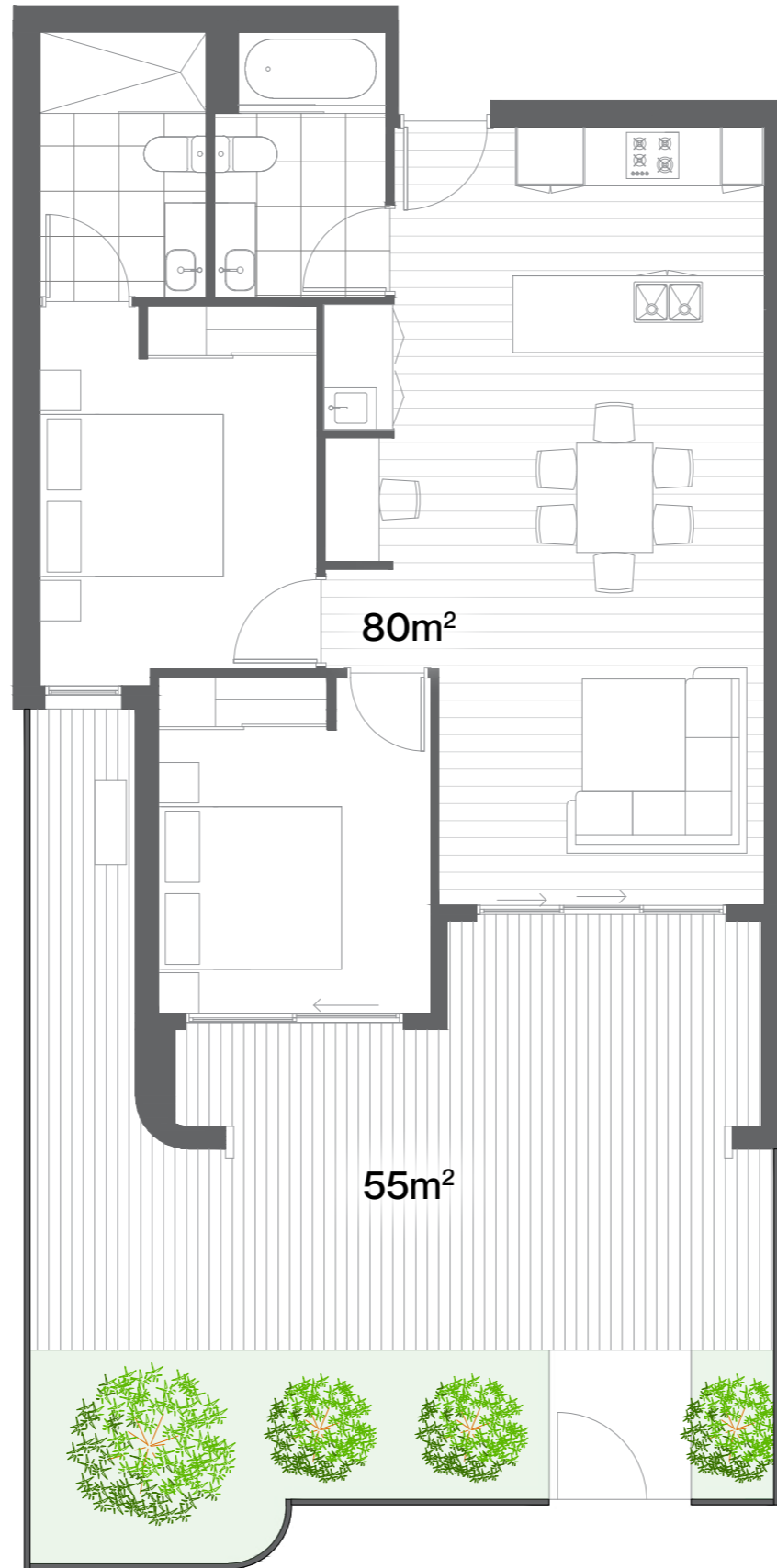
3 2 2



Orientation: South East

This floorplan is for marketing purposes only. The information contained in this floorplan has been produced in good faith with due care. This floorplan has been measured in accordance with the Property Council of Australia method of measurement for residential property.





APT G03

Internal 80m²
External 55m²

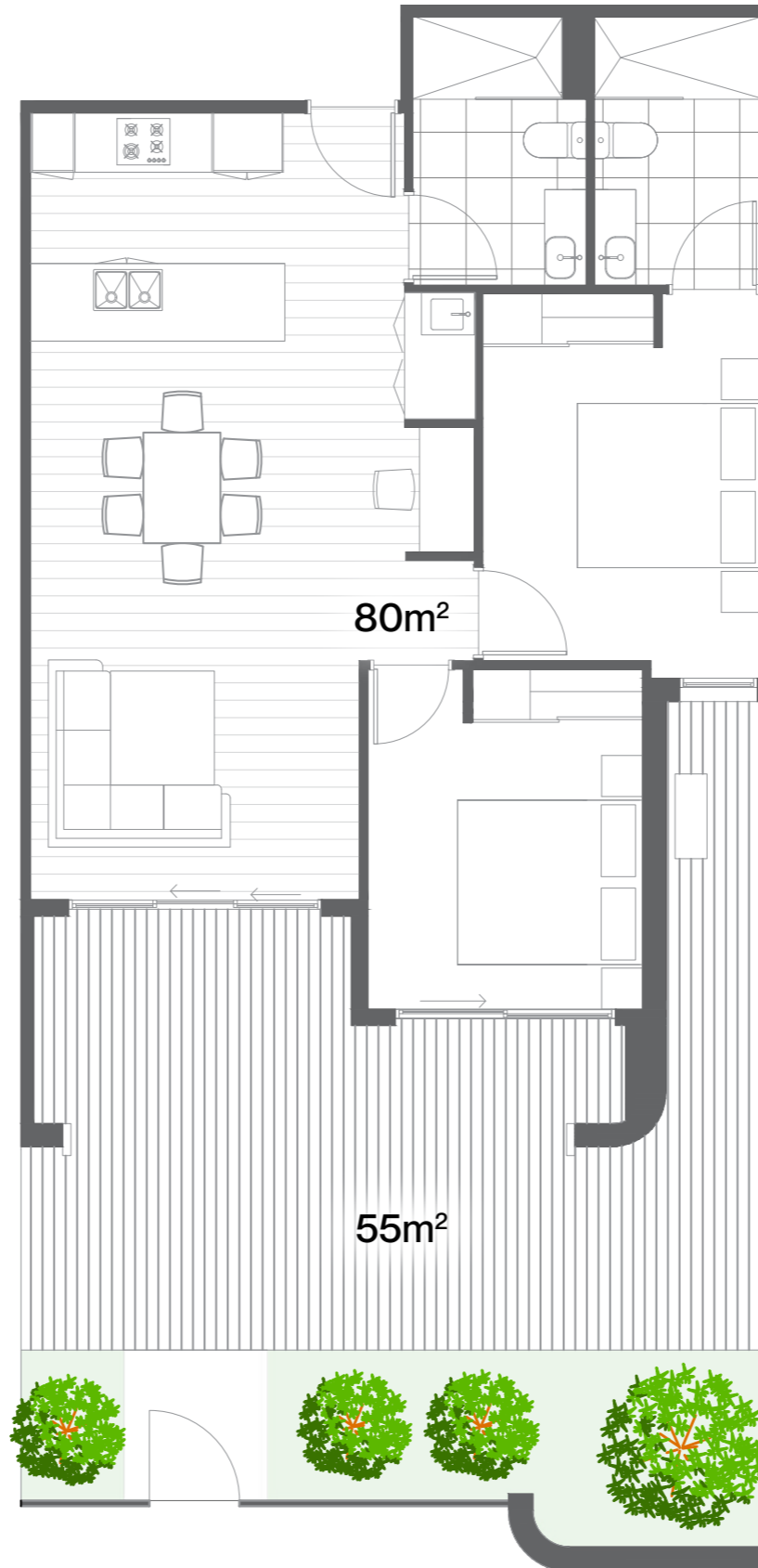
2 2 1



Orientation: South

This floorplan is for marketing purposes only. The information contained in this floorplan has been produced in good faith with due care. This floorplan has been measured in accordance with the Property Council of Australia method of measurement for residential property.





APT G04

Internal 80m²
External 55m²

2 2 1



Orientation: South

This floorplan is for marketing purposes only. The information contained in this floorplan has been produced in good faith with due care. This floorplan has been measured in accordance with the Property Council of Australia method of measurement for residential property.





APT G05

Internal 102m²
External 128m²

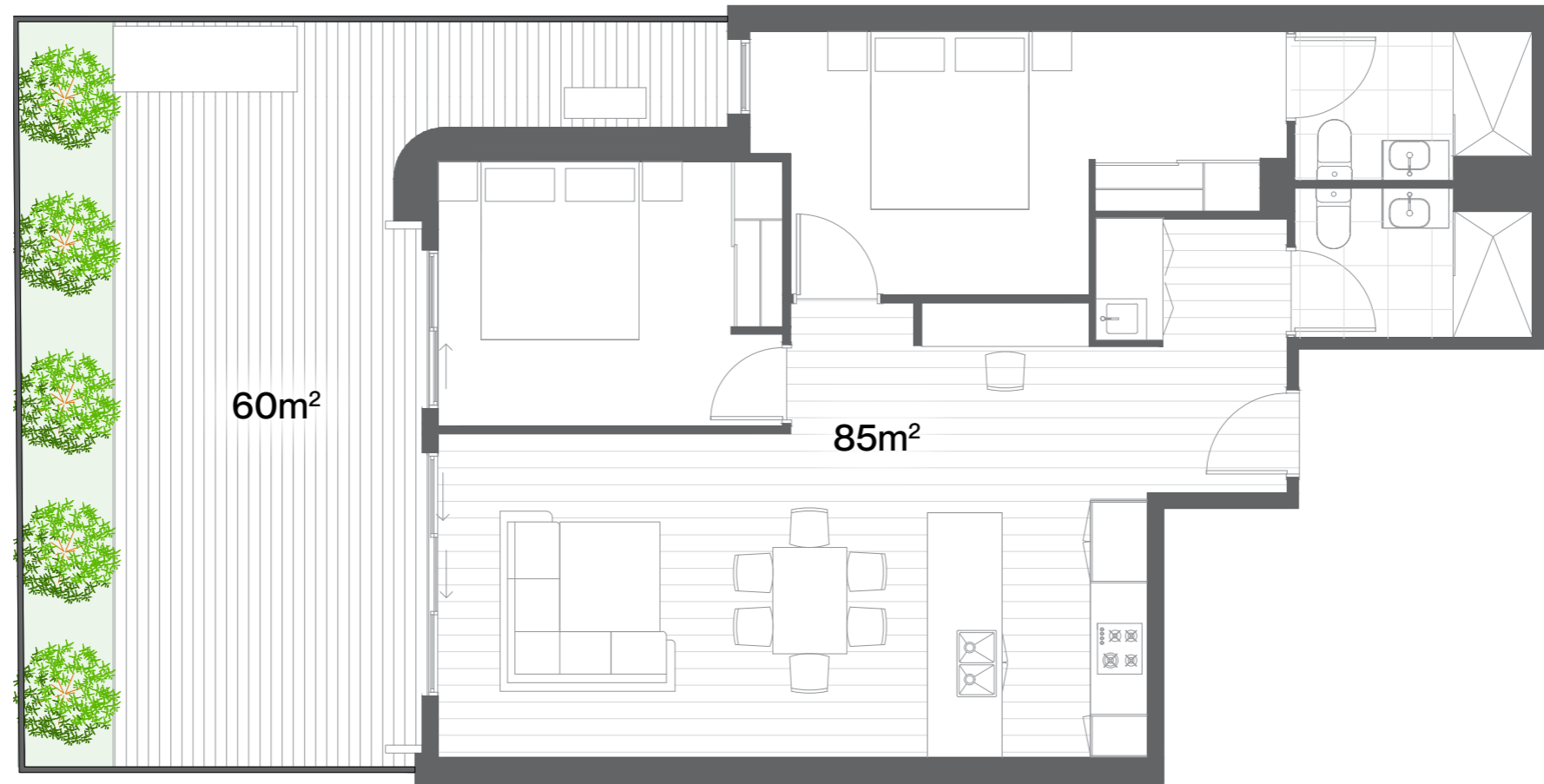
3 2 2



Orientation: South West

This floorplan is for marketing purposes only. The information contained in this floorplan has been produced in good faith with due care. This floorplan has been measured in accordance with the Property Council of Australia method of measurement for residential property.





APT G06

Internal 85m²
External 60m²

2 2 1



Orientation: West

This floorplan is for marketing purposes only. The information contained in this floorplan has been produced in good faith with due care. This floorplan has been measured in accordance with the Property Council of Australia method of measurement for residential property.





APT G07

Internal 85m²
External 50m²

  
2 2 1



Orientation: West

This floorplan is for marketing purposes only. The information contained in this floorplan has been produced in good faith with due care. This floorplan has been measured in accordance with the Property Council of Australia method of measurement for residential property.





APT G08

Internal 102m²
External 116m²

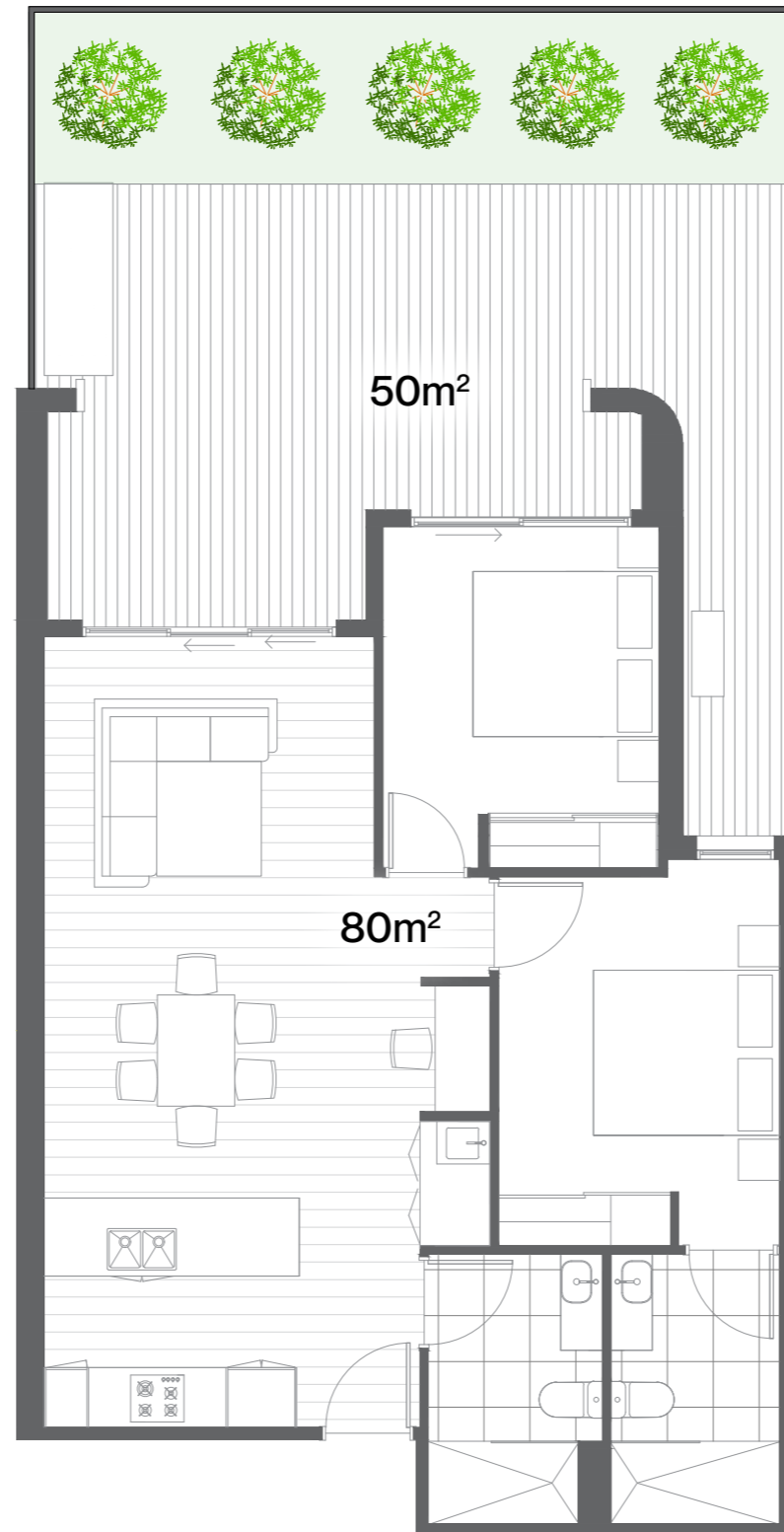
3 2 2



Orientation: North West

This floorplan is for marketing purposes only. The information contained in this floorplan has been produced in good faith with due care. This floorplan has been measured in accordance with the Property Council of Australia method of measurement for residential property.





APT G09

Internal 80m²
External 50m²

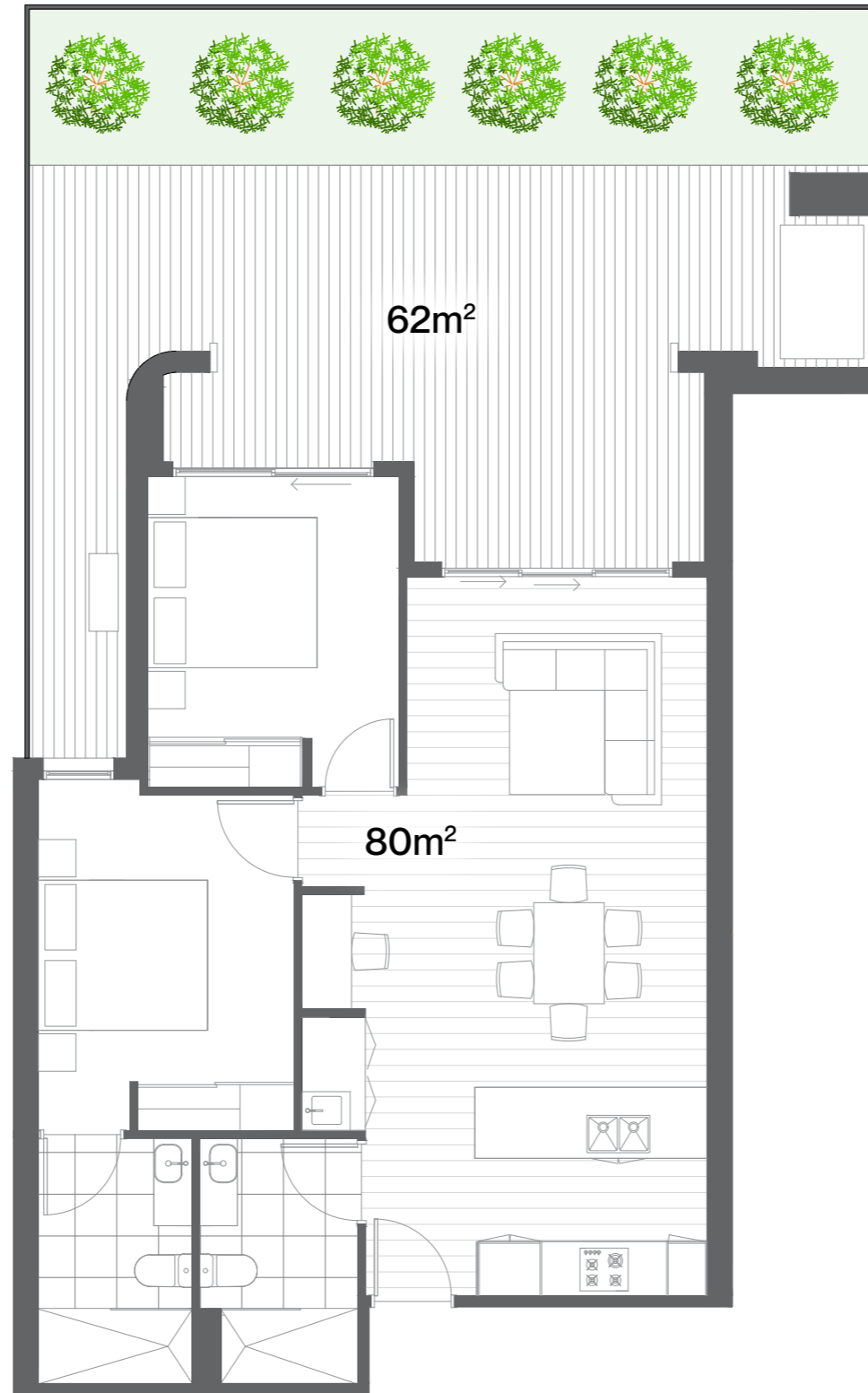
  
2 2 1



Orientation: North

This floorplan is for marketing purposes only. The information contained in this floorplan has been produced in good faith with due care. This floorplan has been measured in accordance with the Property Council of Australia method of measurement for residential property.





APT G10

Internal 80m²
External 62m²

  
2 2 1



Orientation: North

This floorplan is for marketing purposes only. The information contained in this floorplan has been produced in good faith with due care. This floorplan has been measured in accordance with the Property Council of Australia method of measurement for residential property.





APT 101

Internal 86m²
External 12m²

  
2 2 1



Orientation: North East

This floorplan is for marketing purposes only. The information contained in this floorplan has been produced in good faith with due care. This floorplan has been measured in accordance with the Property Council of Australia method of measurement for residential property.





APT 102

Internal 80m²
External 12m²

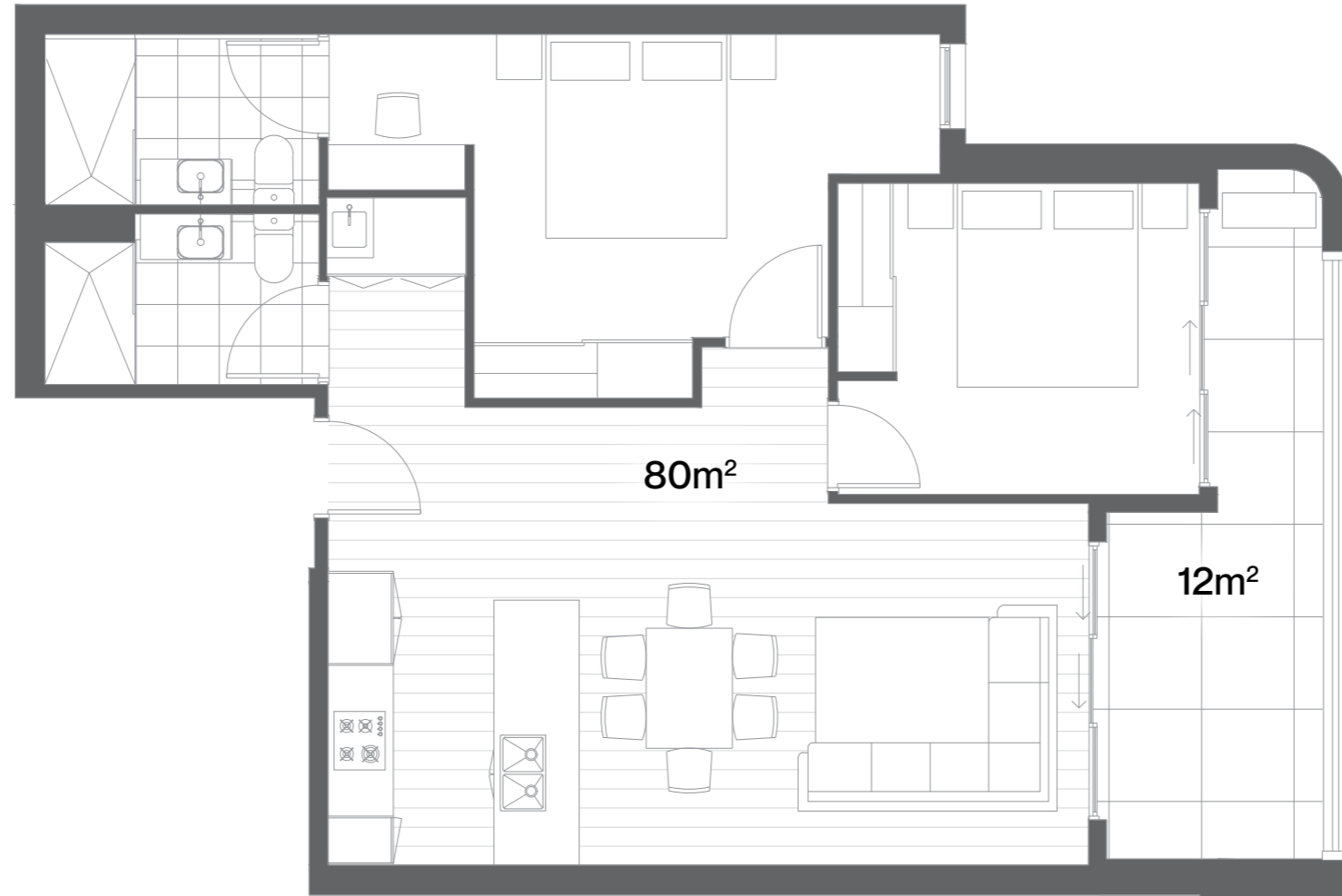
  
2 2 1



Orientation: East

This floorplan is for marketing purposes only. The information contained in this floorplan has been produced in good faith with due care. This floorplan has been measured in accordance with the Property Council of Australia method of measurement for residential property.





A P T 1 0 3

Internal 80m²
External 12m²

2 2 1



Orientation: East

This floorplan is for marketing purposes only. The information contained in this floorplan has been produced in good faith with due care. This floorplan has been measured in accordance with the Property Council of Australia method of measurement for residential property.





APT 104

Internal 86m²
External 12m²

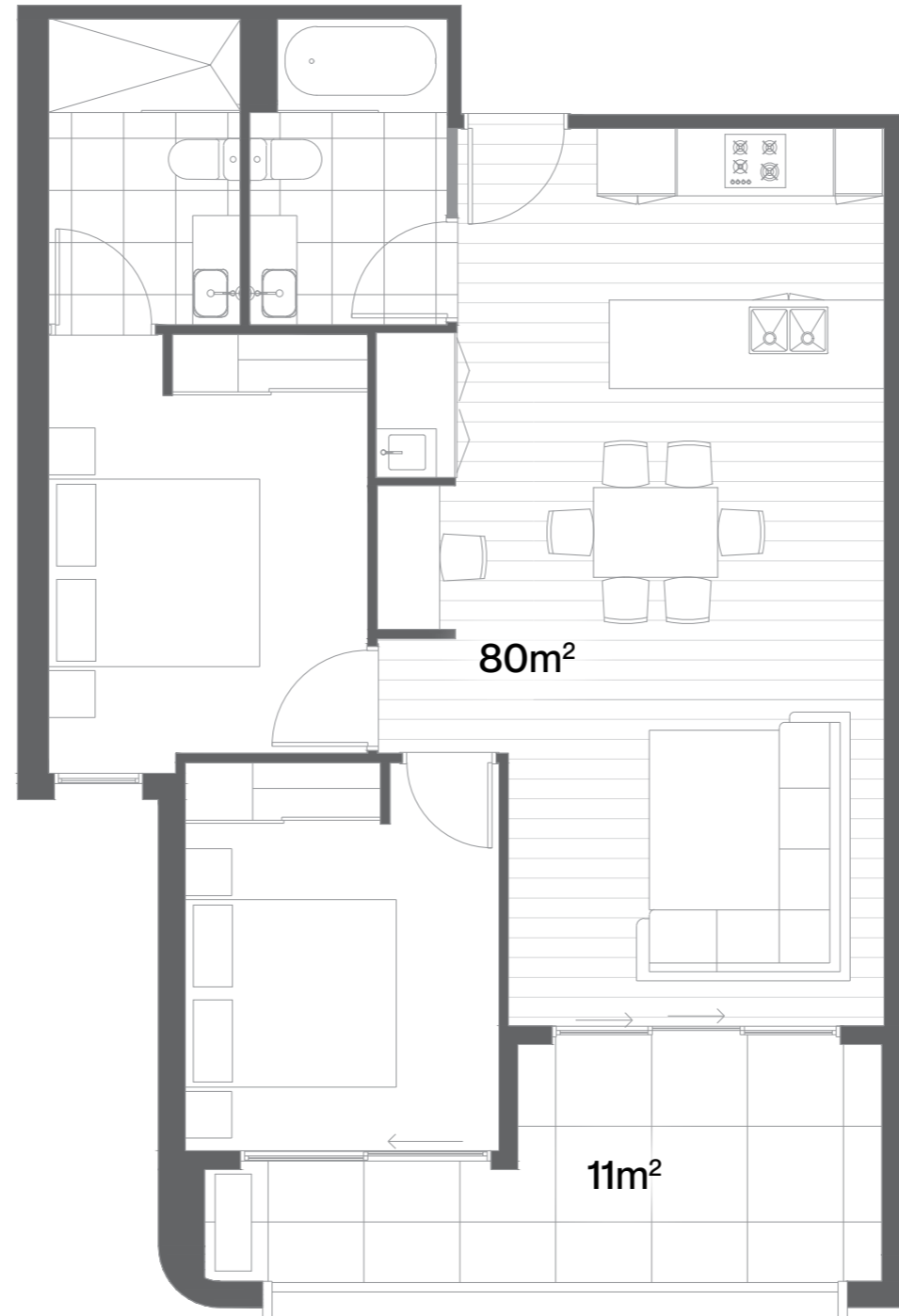
2 2 1



Orientation: South East

This floorplan is for marketing purposes only. The information contained in this floorplan has been produced in good faith with due care. This floorplan has been measured in accordance with the Property Council of Australia method of measurement for residential property.





APT 105

Internal 80m²
External 11m²

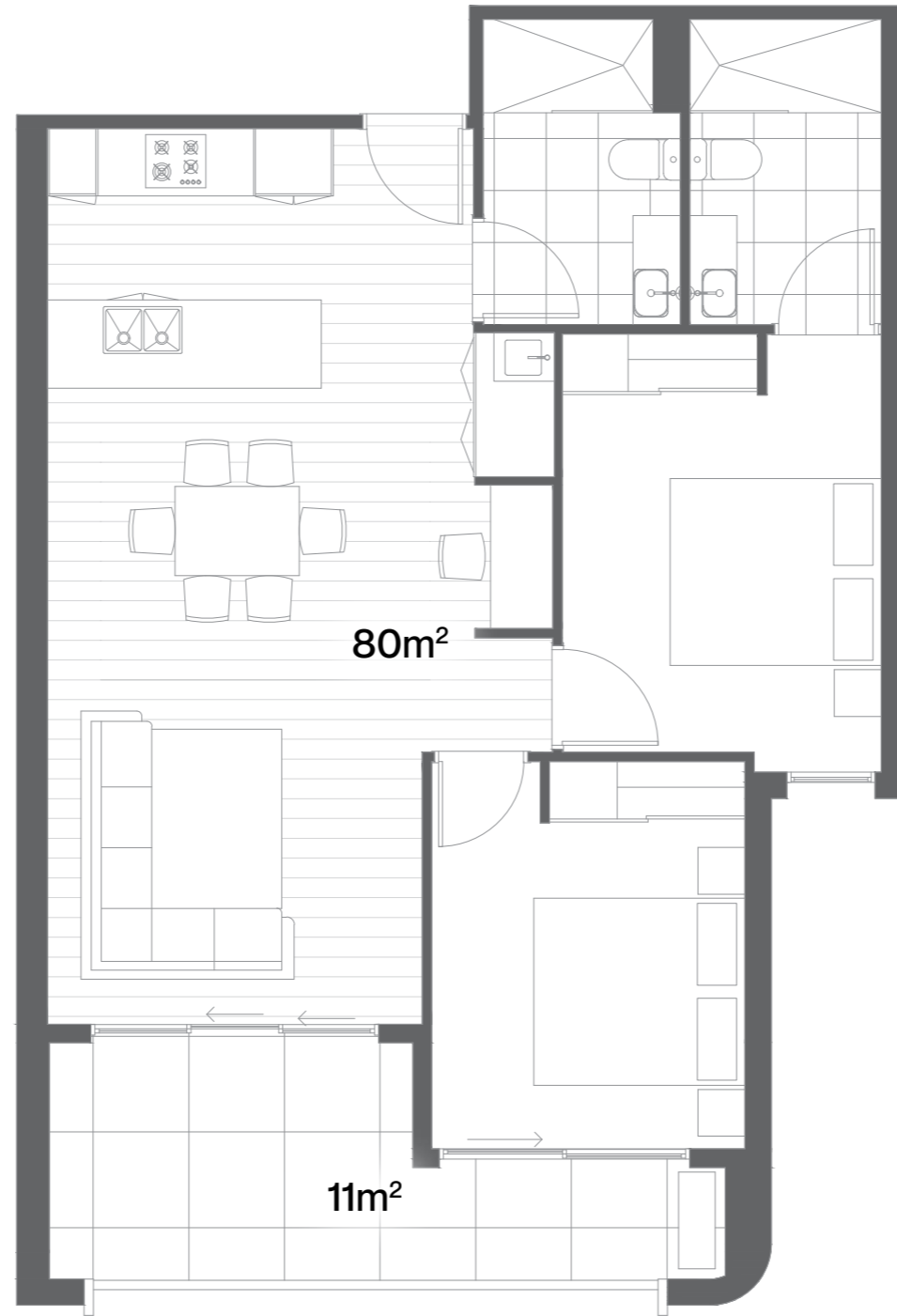
  
2 2 1



Orientation: South

This floorplan is for marketing purposes only. The information contained in this floorplan has been produced in good faith with due care. This floorplan has been measured in accordance with the Property Council of Australia method of measurement for residential property.





APT 106

Internal 80m²
External 11m²

  
2 2 1



Orientation: South

This floorplan is for marketing purposes only. The information contained in this floorplan has been produced in good faith with due care. This floorplan has been measured in accordance with the Property Council of Australia method of measurement for residential property.





APT 107

Internal 86m²
External 12m²

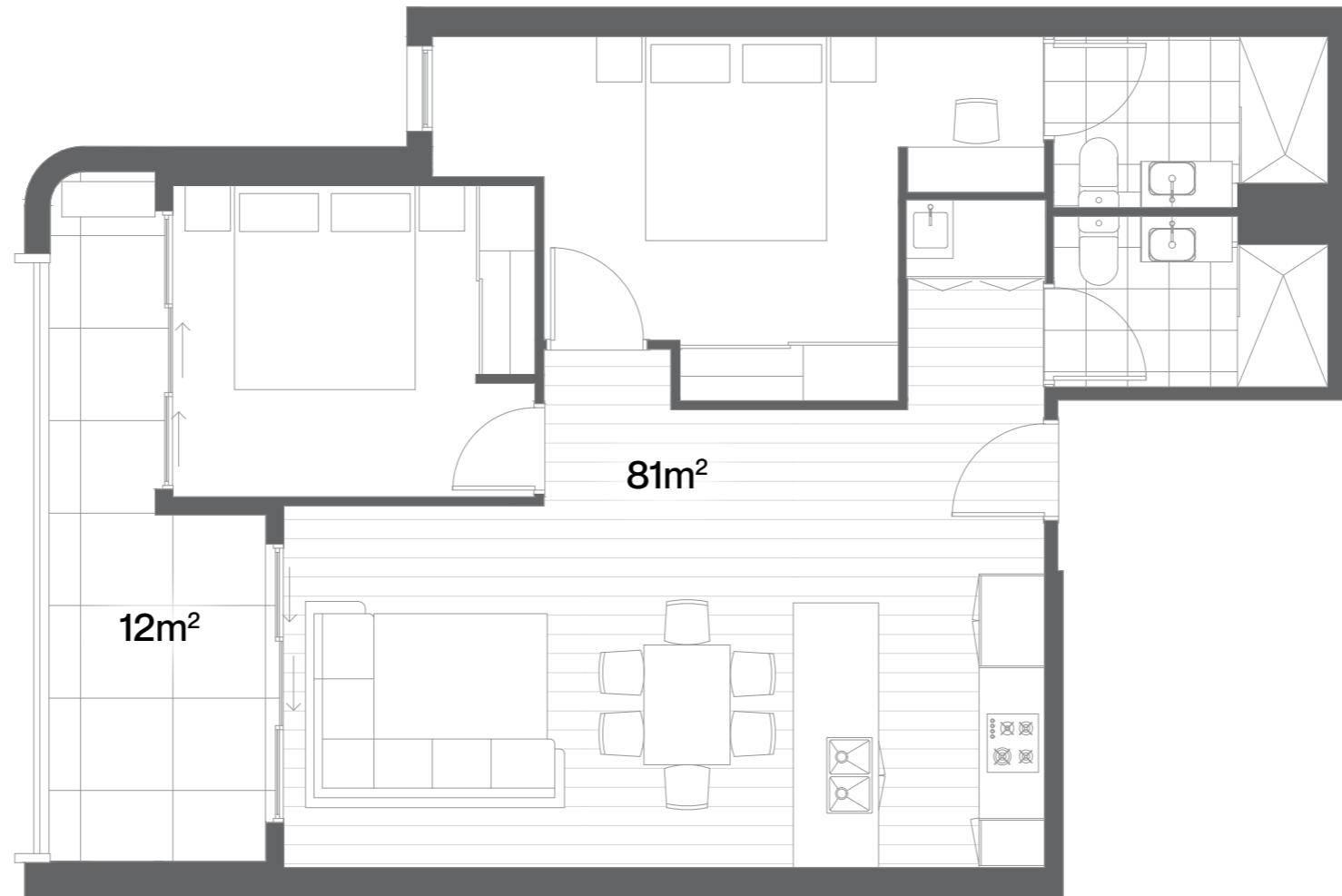
2 2 1



Orientation: South West

This floorplan is for marketing purposes only. The information contained in this floorplan has been produced in good faith with due care. This floorplan has been measured in accordance with the Property Council of Australia method of measurement for residential property.





A P T 1 0 8

Internal 81m²
External 12m²

  
2 2 1



Orientation: West

This floorplan is for marketing purposes only. The information contained in this floorplan has been produced in good faith with due care. This floorplan has been measured in accordance with the Property Council of Australia method of measurement for residential property.





APT 109

Internal 81m²
External 12m²

  
2 2 1



Orientation: West

This floorplan is for marketing purposes only. The information contained in this floorplan has been produced in good faith with due care. This floorplan has been measured in accordance with the Property Council of Australia method of measurement for residential property.





APT 110

Internal 86m²
External 12m²

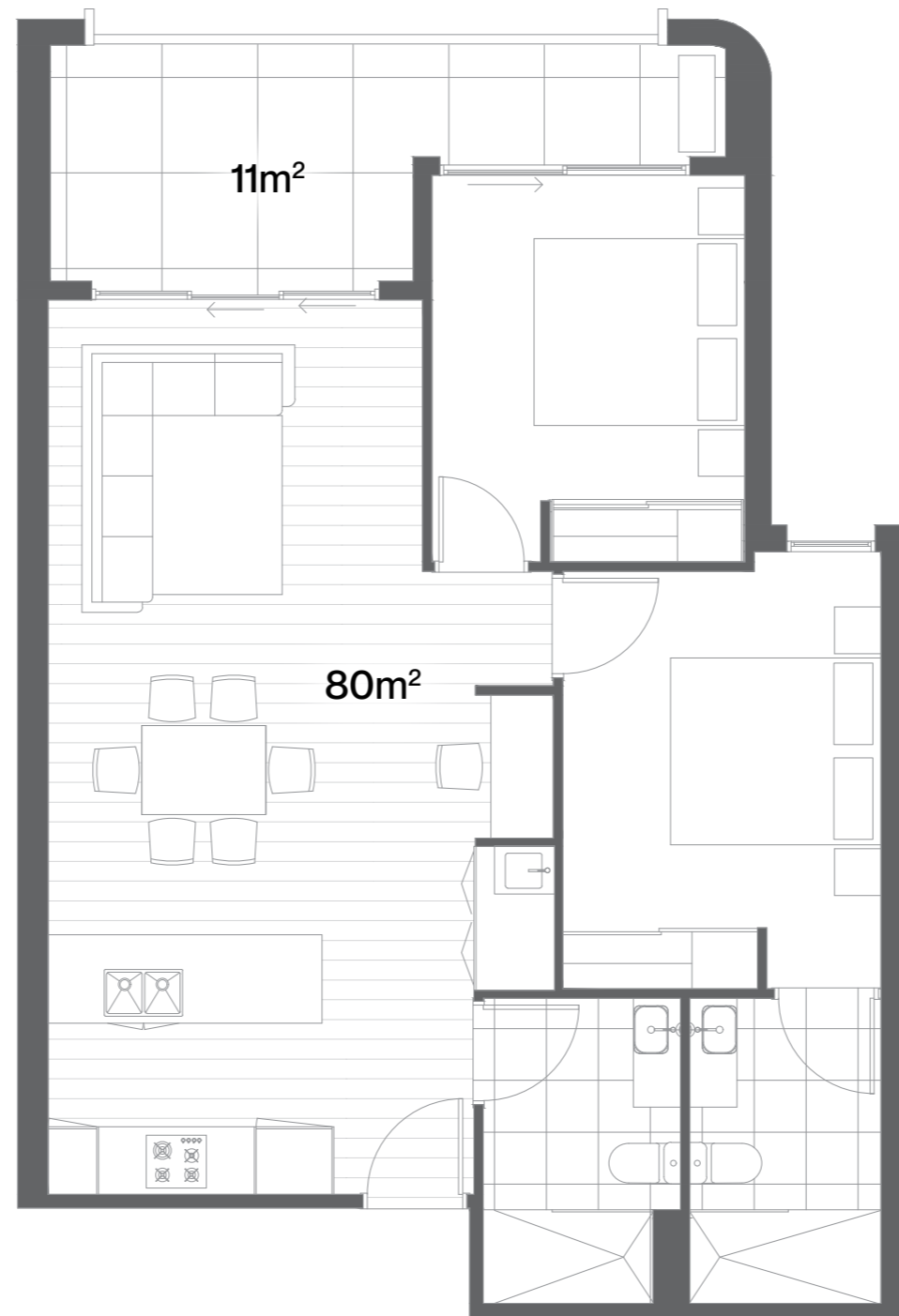
  
2 2 1



Orientation: North West

This floorplan is for marketing purposes only. The information contained in this floorplan has been produced in good faith with due care. This floorplan has been measured in accordance with the Property Council of Australia method of measurement for residential property.





APT 111

Internal 80m²
External 11m²

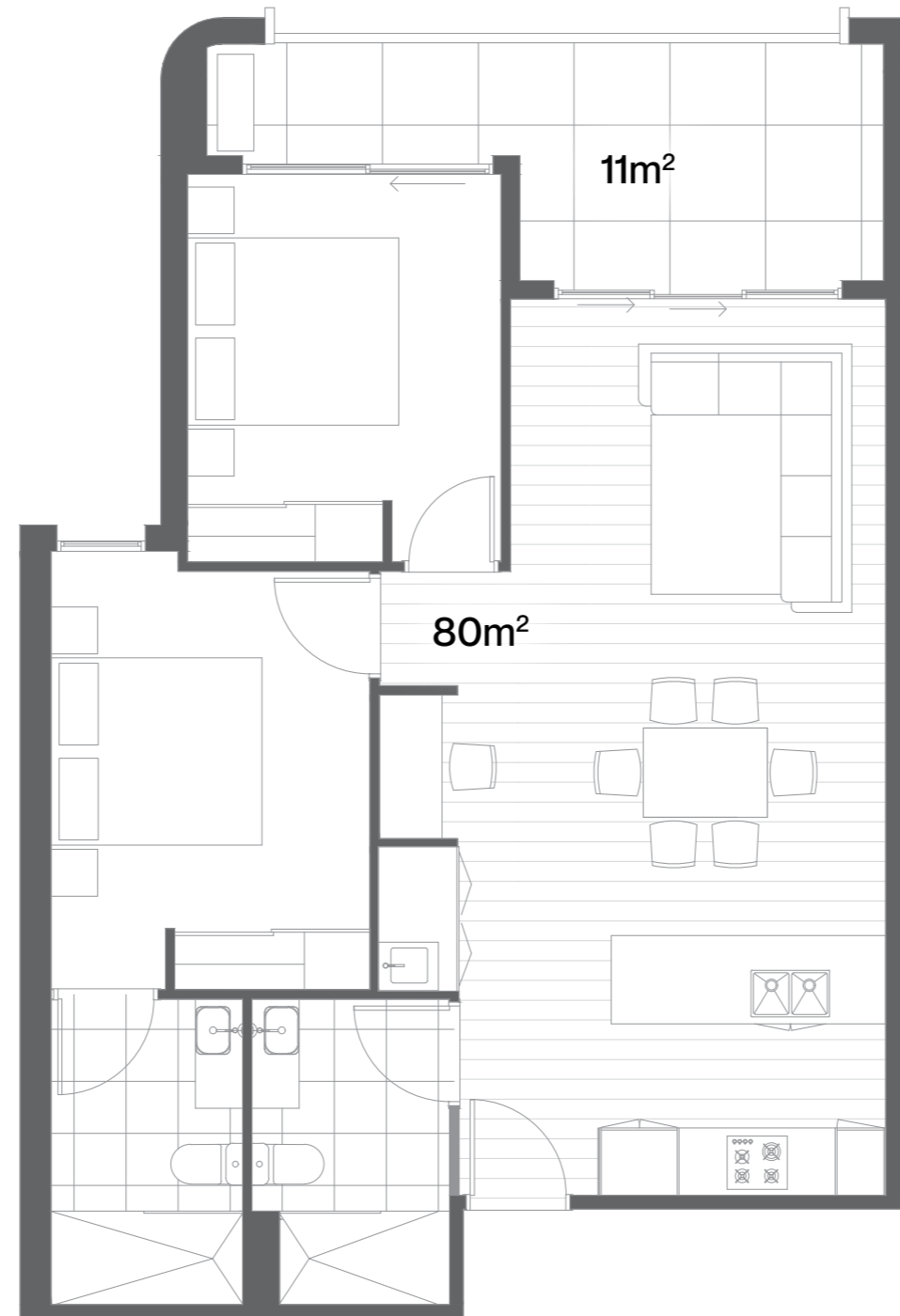
  
2 2 1



Orientation: North

This floorplan is for marketing purposes only. The information contained in this floorplan has been produced in good faith with due care. This floorplan has been measured in accordance with the Property Council of Australia method of measurement for residential property.





APT 112

Internal 80m²
External 11m²

  
2 2 1



Orientation: North

This floorplan is for marketing purposes only. The information contained in this floorplan has been produced in good faith with due care. This floorplan has been measured in accordance with the Property Council of Australia method of measurement for residential property.





APT 201

Internal 86m²
External 12m²

  
2 2 1



Orientation: North East

This floorplan is for marketing purposes only. The information contained in this floorplan has been produced in good faith with due care. This floorplan has been measured in accordance with the Property Council of Australia method of measurement for residential property.





APT 202

Internal 80m²
External 12m²

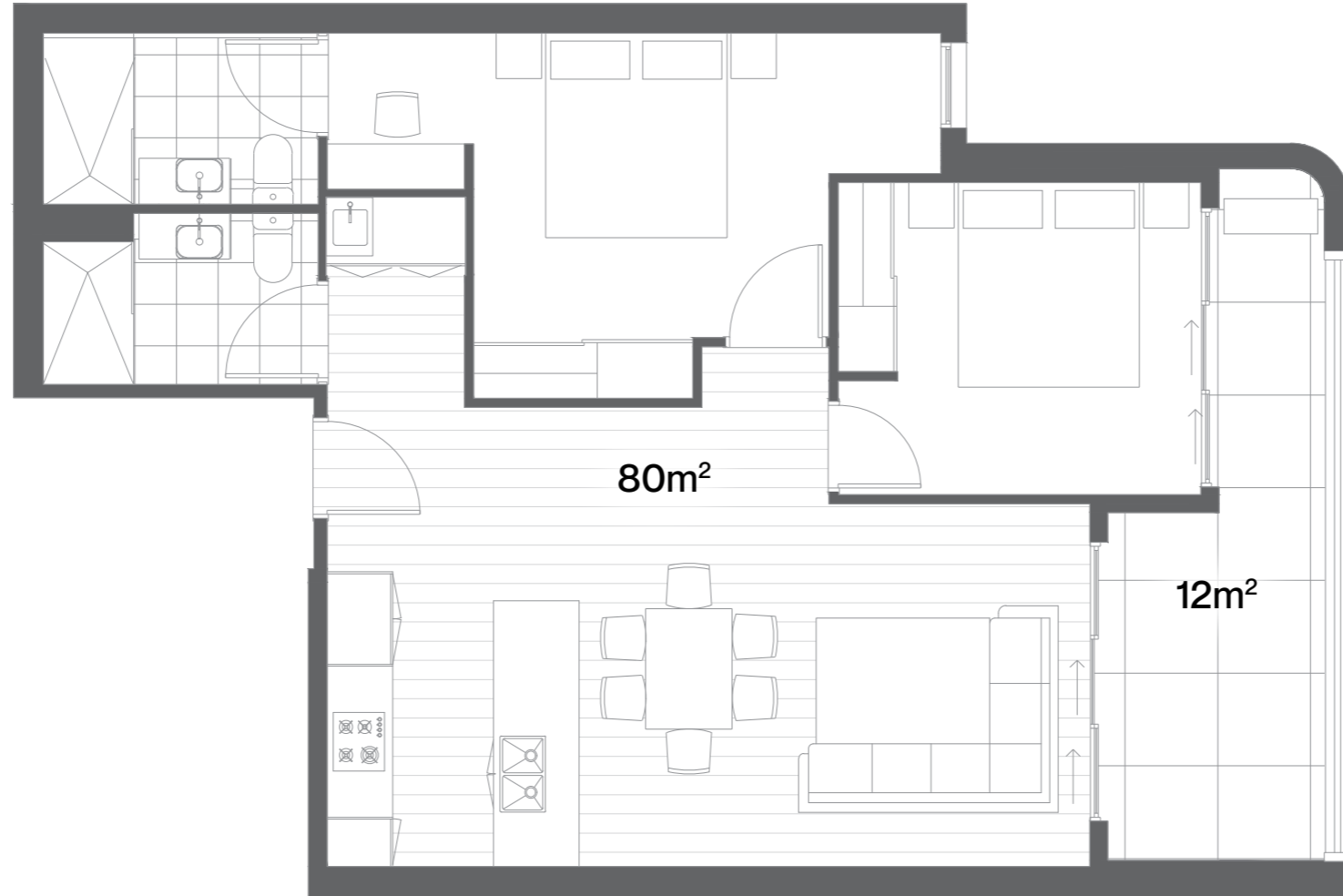
  
2 2 1



Orientation: East

This floorplan is for marketing purposes only. The information contained in this floorplan has been produced in good faith with due care. This floorplan has been measured in accordance with the Property Council of Australia method of measurement for residential property.





APT 203

Internal 80m²
External 12m²

2 2 1



Orientation: East

This floorplan is for marketing purposes only. The information contained in this floorplan has been produced in good faith with due care. This floorplan has been measured in accordance with the Property Council of Australia method of measurement for residential property.





APT 204

Internal 86m²
External 12m²

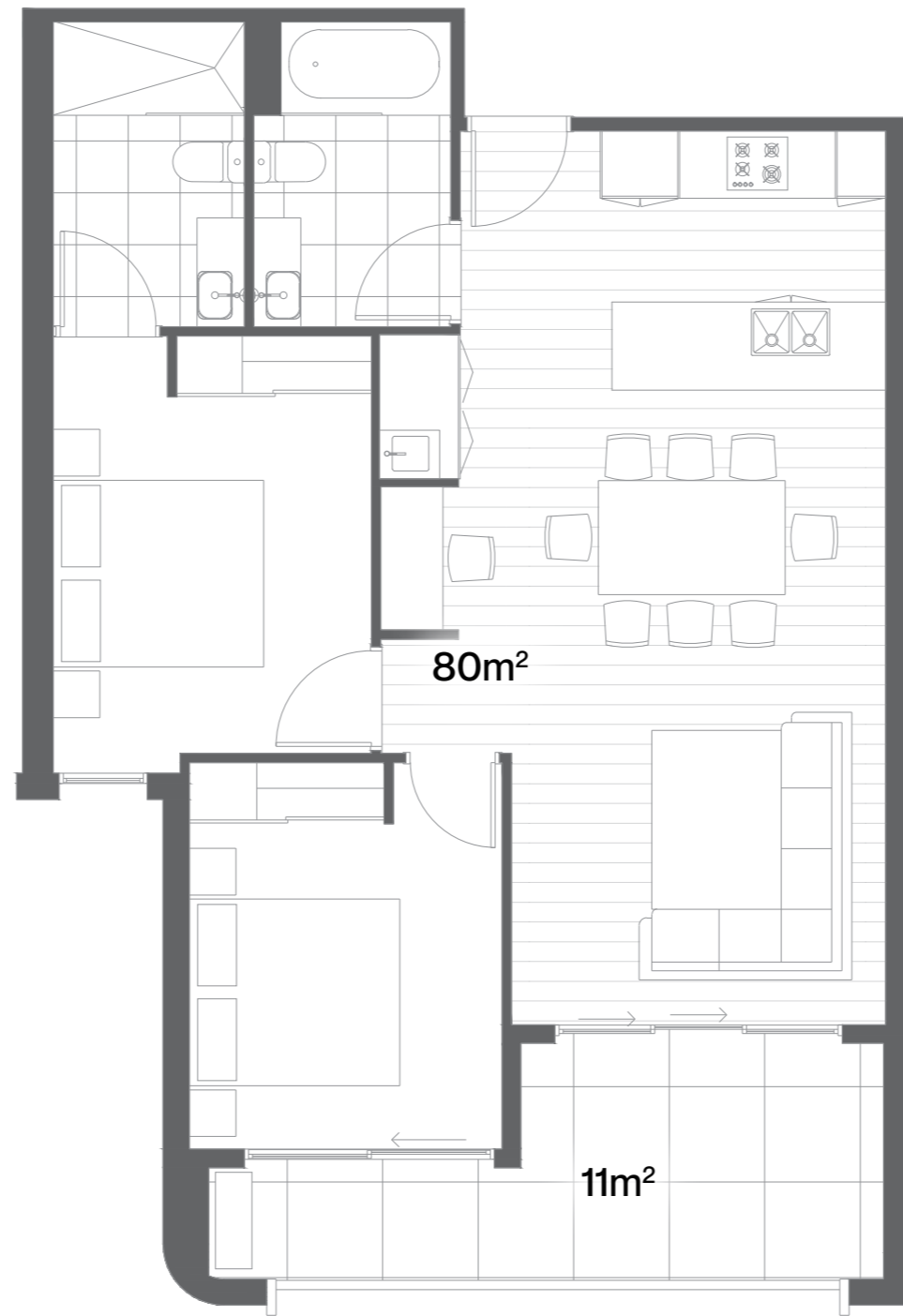
  
2 2 1



Orientation: South East


This floorplan is for marketing purposes only. The information contained in this floorplan has been produced in good faith with due care. This floorplan has been measured in accordance with the Property Council of Australia method of measurement for residential property.





APT 205

Internal 80m²
External 11m²

  
2 2 1



Orientation: South

This floorplan is for marketing purposes only. The information contained in this floorplan has been produced in good faith with due care. This floorplan has been measured in accordance with the Property Council of Australia method of measurement for residential property.





APT 206

Internal 80m²
External 11m²

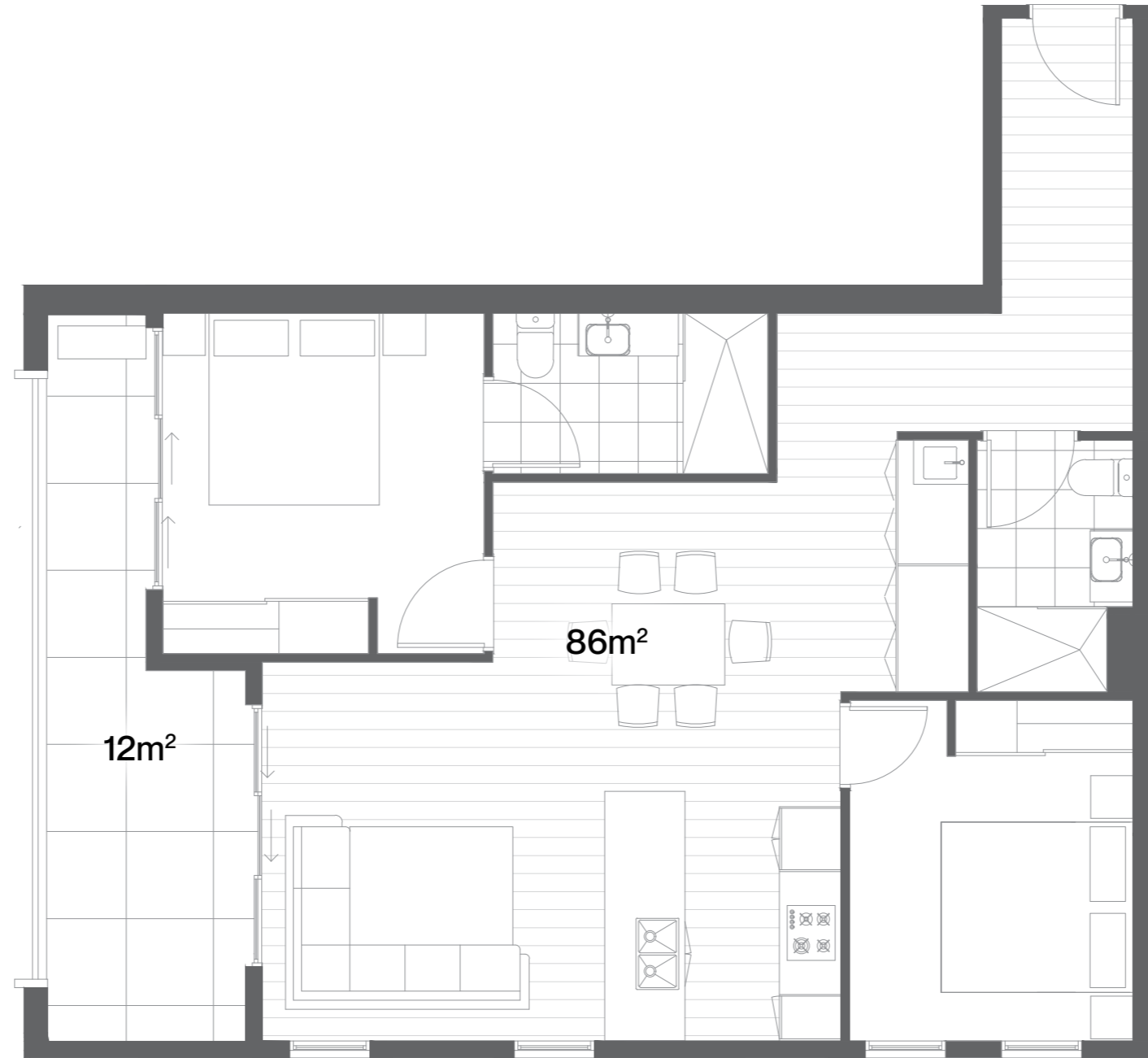
2 2 1



Orientation: South

This floorplan is for marketing purposes only. The information contained in this floorplan has been produced in good faith with due care. This floorplan has been measured in accordance with the Property Council of Australia method of measurement for residential property.





A P T 2 0 7

Internal 86m²
External 12m²

2 2 1



Orientation: South West

This floorplan is for marketing purposes only. The information contained in this floorplan has been produced in good faith with due care. This floorplan has been measured in accordance with the Property Council of Australia method of measurement for residential property.





A P T 2 0 8

Internal 80m²
External 12m²

2 2 1



Orientation: West

This floorplan is for marketing purposes only. The information contained in this floorplan has been produced in good faith with due care. This floorplan has been measured in accordance with the Property Council of Australia method of measurement for residential property.





APT 209

Internal 80m²
External 12m²

  
2 2 1



Orientation: West

This floorplan is for marketing purposes only. The information contained in this floorplan has been produced in good faith with due care. This floorplan has been measured in accordance with the Property Council of Australia method of measurement for residential property.





APT 210

Internal 86m²
External 12m²

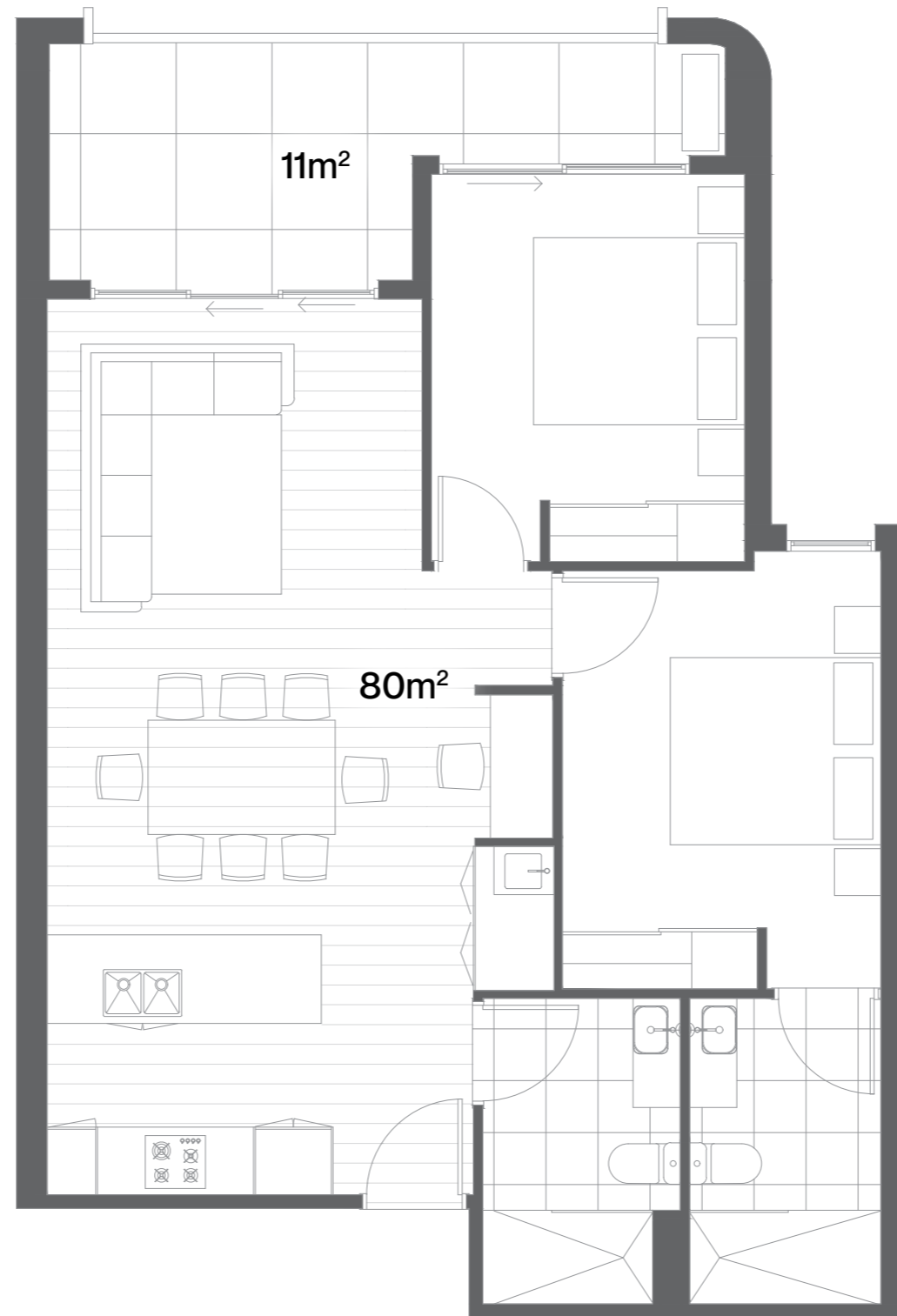
2 2 1



Orientation: North West

This floorplan is for marketing purposes only. The information contained in this floorplan has been produced in good faith with due care. This floorplan has been measured in accordance with the Property Council of Australia method of measurement for residential property.





A P T 2 1 1

Internal 80m²
External 11m²

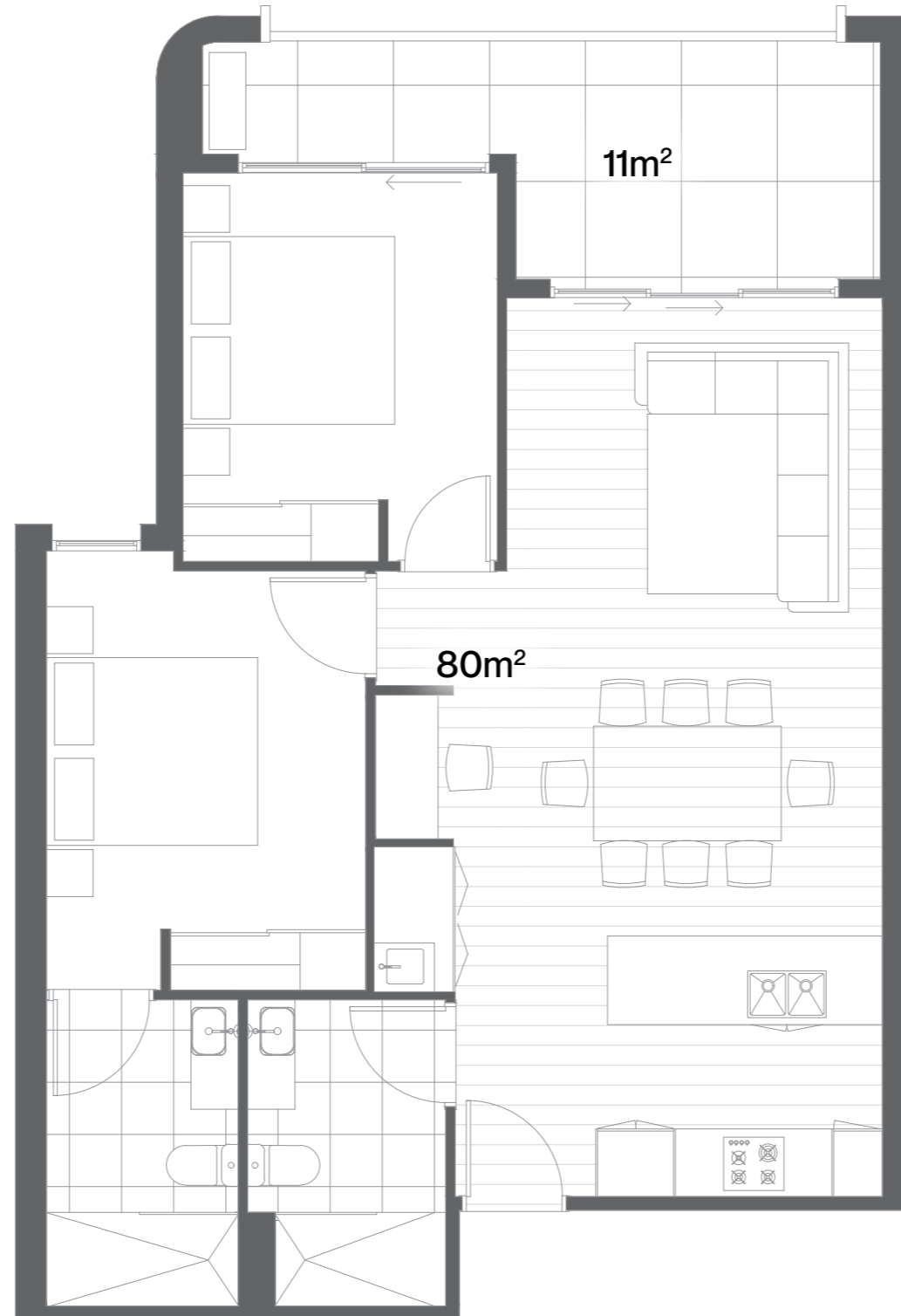
  
2 2 1



Orientation: North

This floorplan is for marketing purposes only. The information contained in this floorplan has been produced in good faith with due care. This floorplan has been measured in accordance with the Property Council of Australia method of measurement for residential property.





APT 212

Internal 80m²
External 11m²

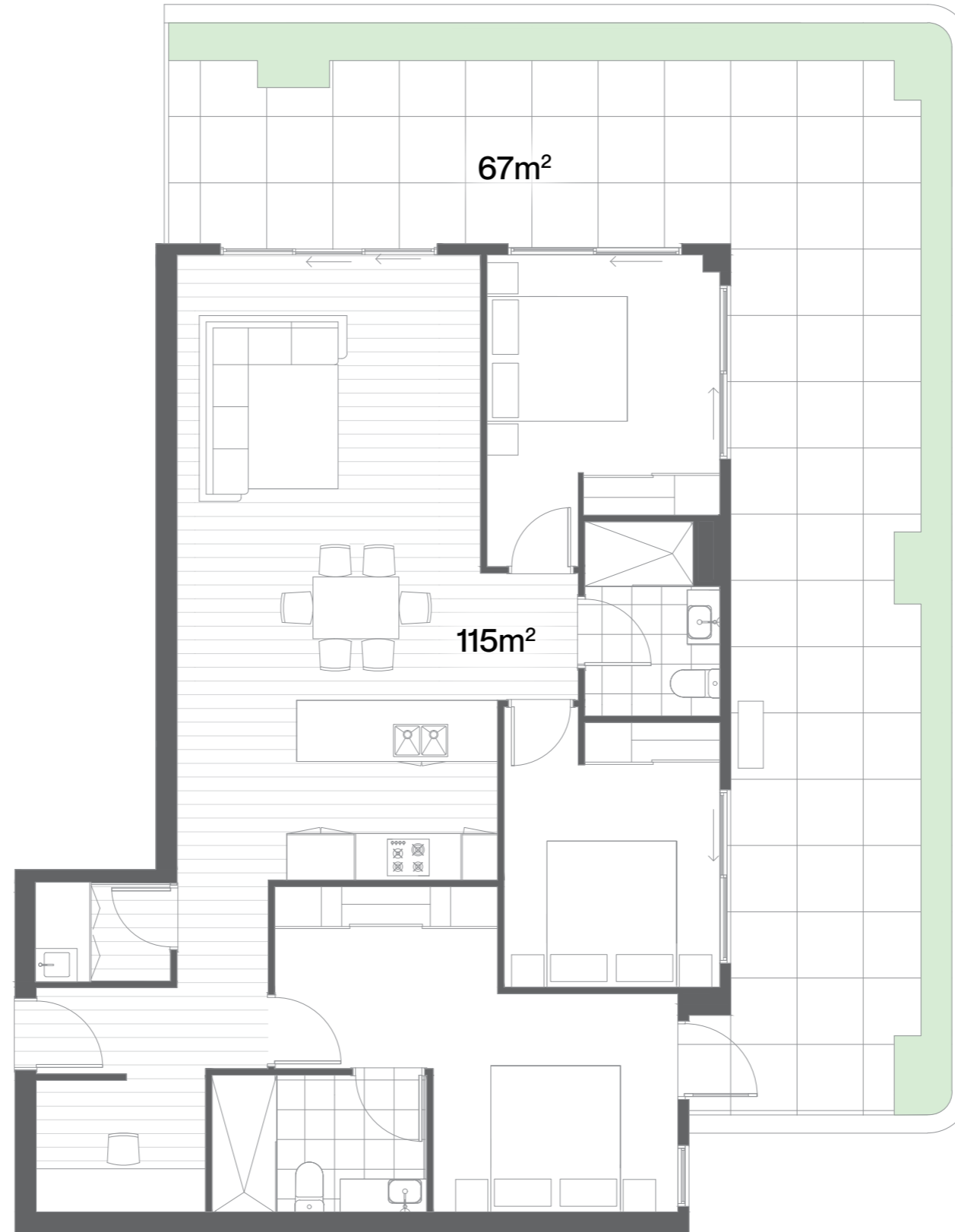
2 2 1



Orientation: North

This floorplan is for marketing purposes only. The information contained in this floorplan has been produced in good faith with due care. This floorplan has been measured in accordance with the Property Council of Australia method of measurement for residential property.





A P T 3 0 1

Internal 115m²
External 67m²

3 2 2



Orientation: North East


This floorplan is for marketing purposes only. The information contained in this floorplan has been produced in good faith with due care. This floorplan has been measured in accordance with the Property Council of Australia method of measurement for residential property.





A P T 3 0 2

Internal 115m²
External 67m²

  
3 2 2



Orientation: South East

This floorplan is for marketing purposes only. The information contained in this floorplan has been produced in good faith with due care. This floorplan has been measured in accordance with the Property Council of Australia method of measurement for residential property.





A P T 3 0 3

Internal 77m²
External 21m²

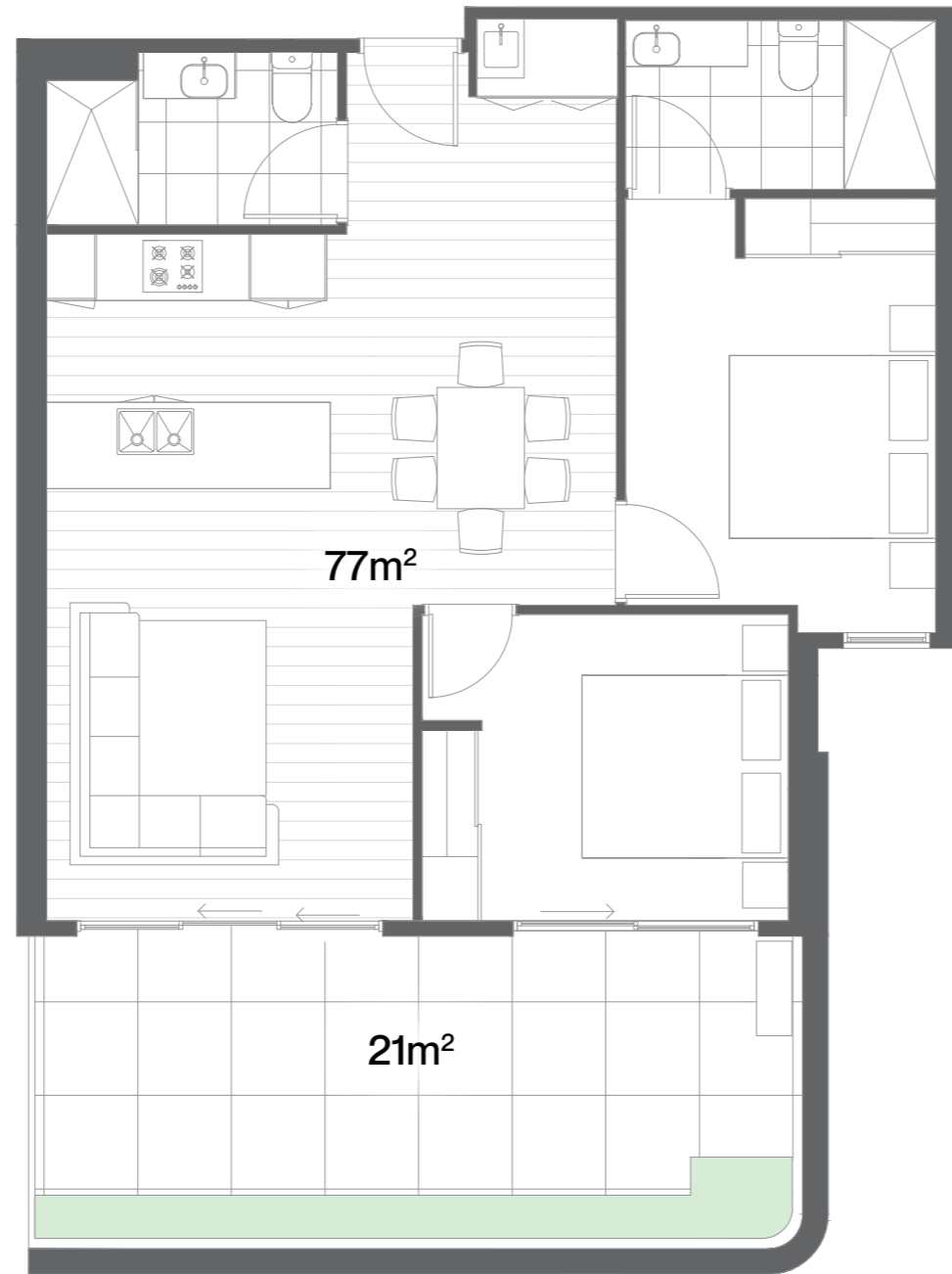
  
2 2 1



Orientation: South

This floorplan is for marketing purposes only. The information contained in this floorplan has been produced in good faith with due care. This floorplan has been measured in accordance with the Property Council of Australia method of measurement for residential property.





A P T 3 0 4

Internal 77m²
External 21m²

  
2 2 1



Orientation: South

This floorplan is for marketing purposes only. The information contained in this floorplan has been produced in good faith with due care. This floorplan has been measured in accordance with the Property Council of Australia method of measurement for residential property.





A P T 3 0 5

Internal 115m²
External 67m²

  
3 2 2



Orientation: South West

This floorplan is for marketing purposes only. The information contained in this floorplan has been produced in good faith with due care. This floorplan has been measured in accordance with the Property Council of Australia method of measurement for residential property.





A P T 3 0 6

Internal 115m²
External 67m²

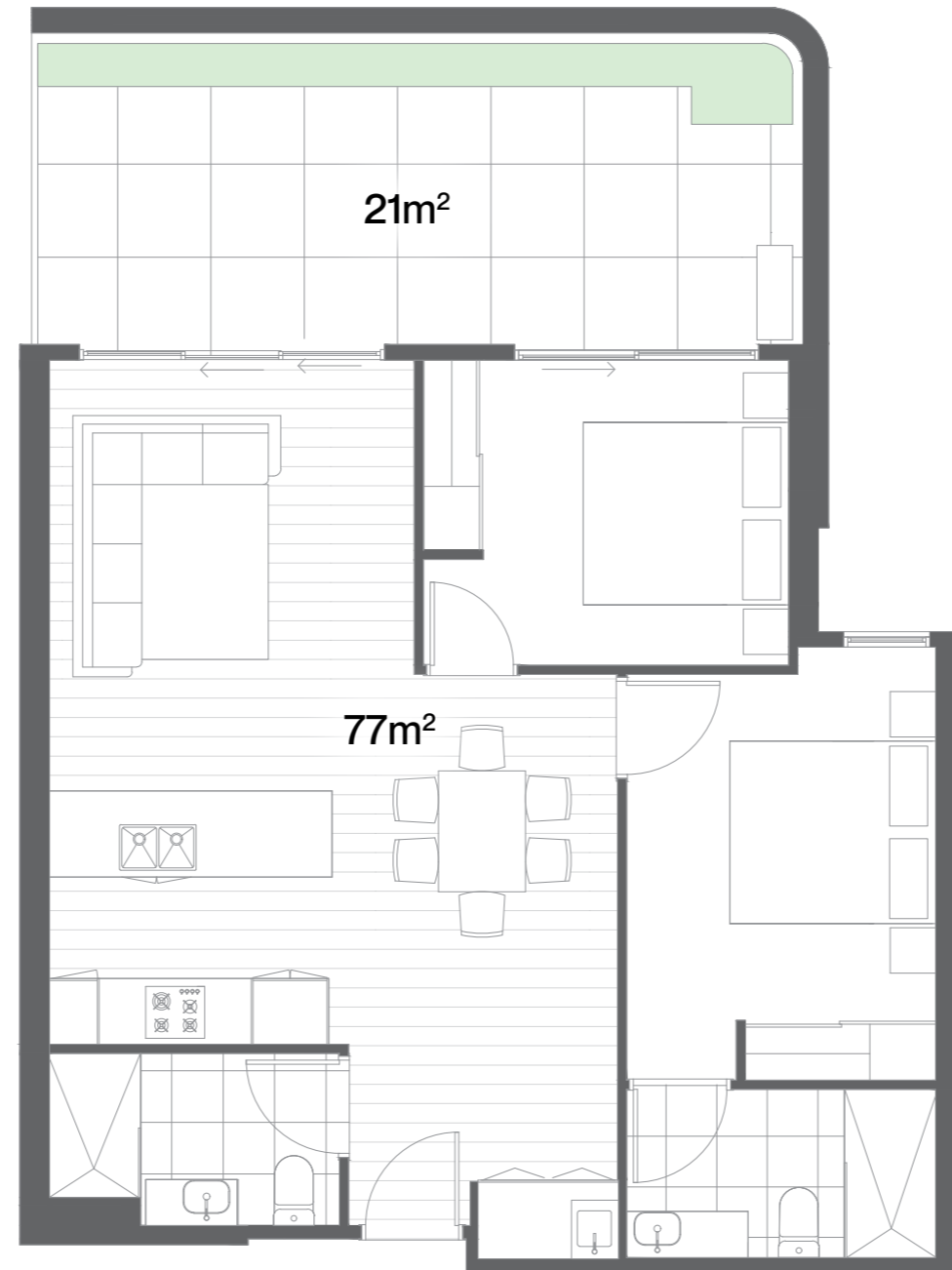
  
3 2 2



Orientation: North West

This floorplan is for marketing purposes only. The information contained in this floorplan has been produced in good faith with due care. This floorplan has been measured in accordance with the Property Council of Australia method of measurement for residential property.





APT 307

Internal 77m²
External 21m²

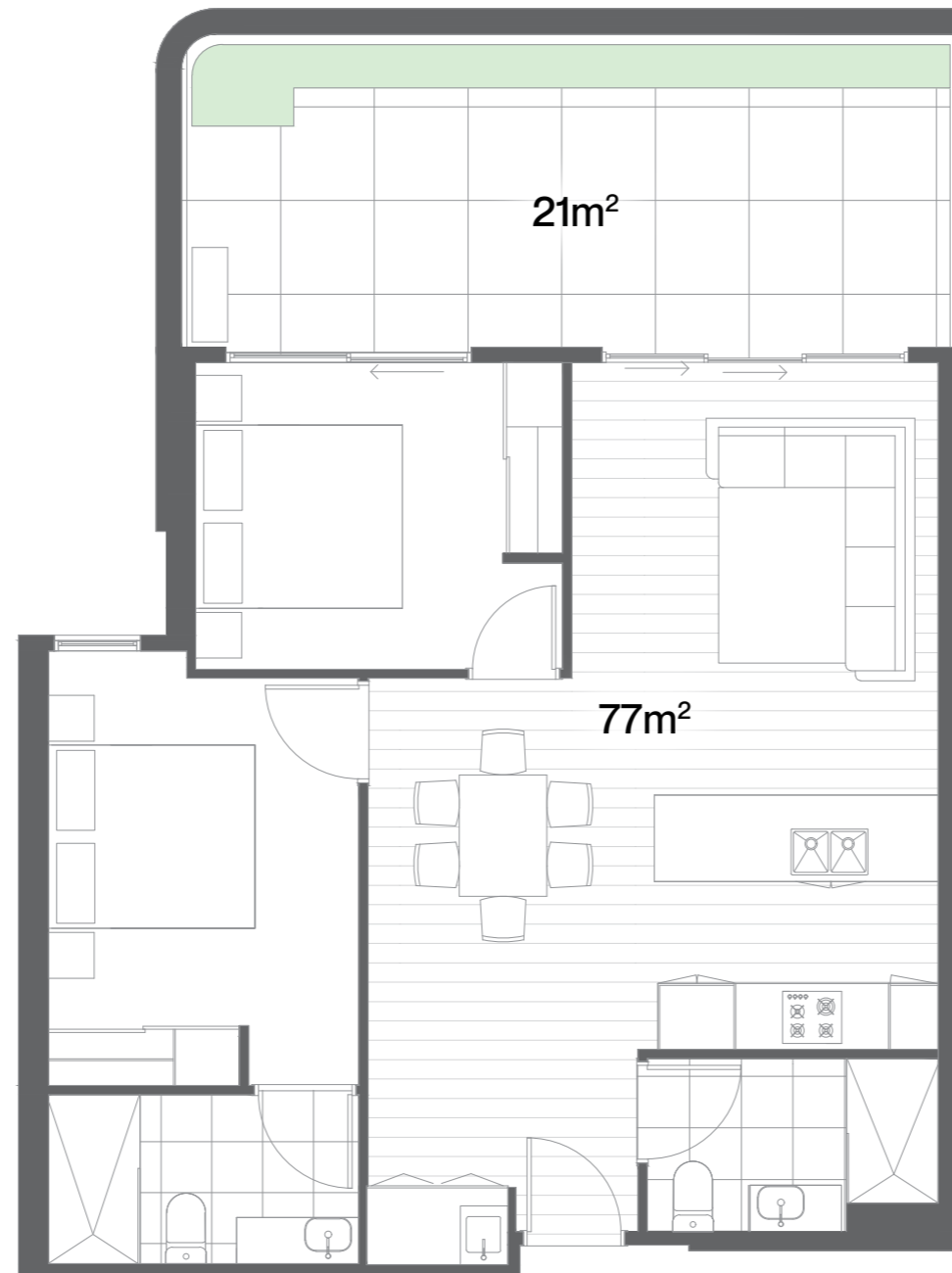
  
2 2 1



Orientation: North

This floorplan is for marketing purposes only. The information contained in this floorplan has been produced in good faith with due care. This floorplan has been measured in accordance with the Property Council of Australia method of measurement for residential property.





A P T 3 0 8

Internal 77m²
External 21m²

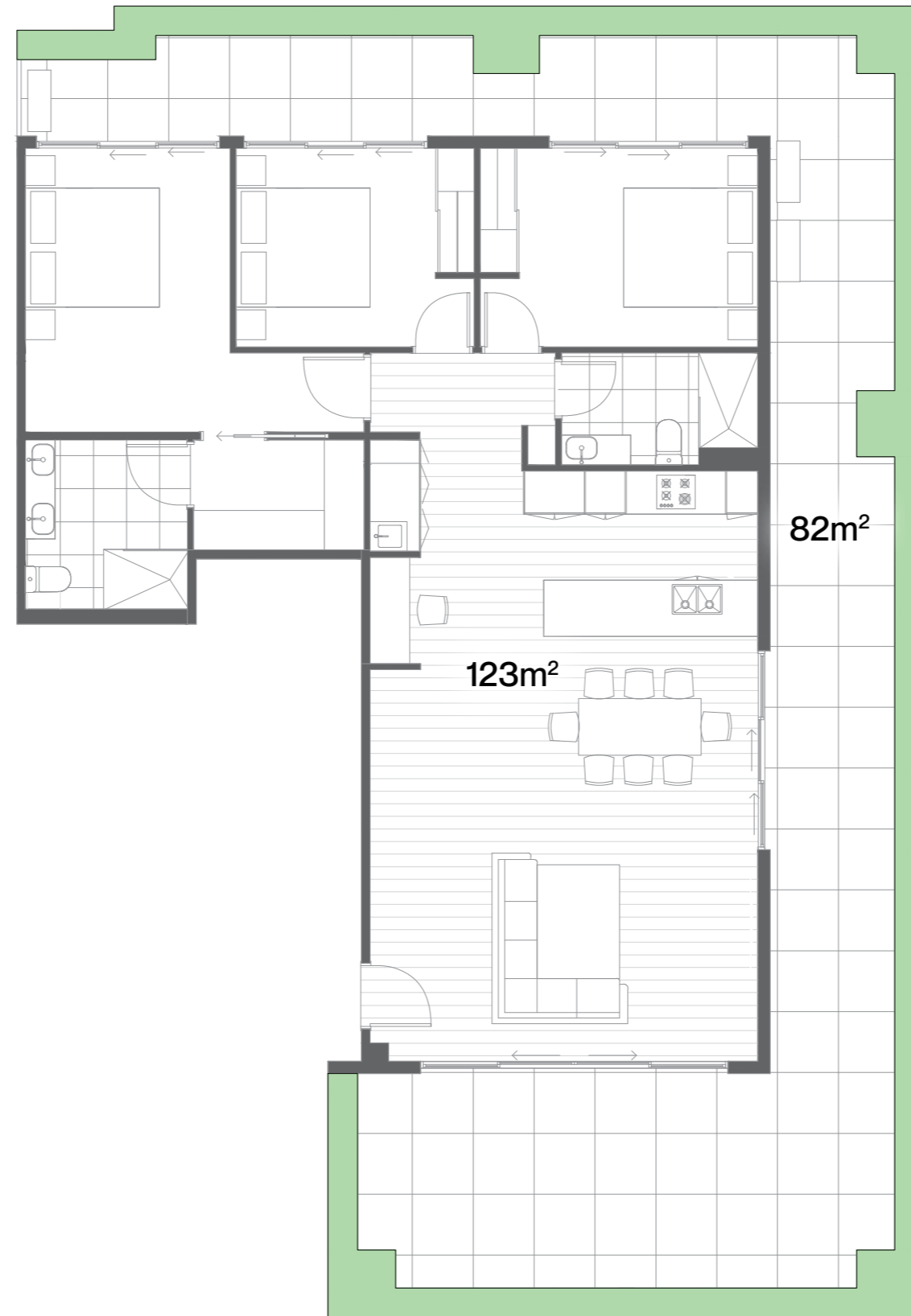
  
2 2 1



Orientation: North

This floorplan is for marketing purposes only. The information contained in this floorplan has been produced in good faith with due care. This floorplan has been measured in accordance with the Property Council of Australia method of measurement for residential property.





A P T 4 0 1

Internal 123m²
External 82m²

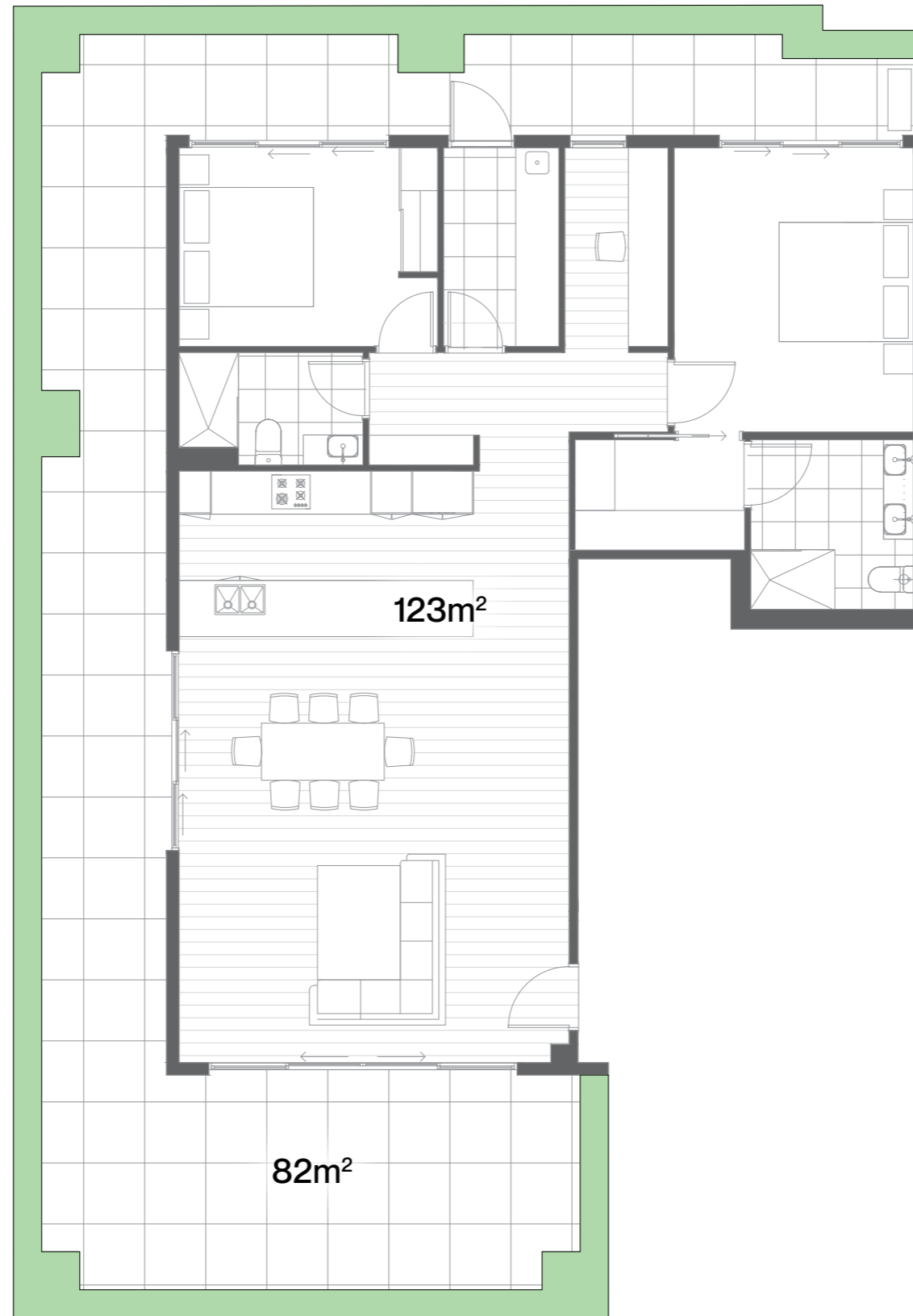
3 2 2



Orientation: North, East, South

This floorplan is for marketing purposes only. The information contained in this floorplan has been produced in good faith with due care. This floorplan has been measured in accordance with the Property Council of Australia method of measurement for residential property.





A P T 4 0 2

Internal 123m²
External 82m²

  
3 2 2



Orientation: North, West, South

This floorplan is for marketing purposes only. The information contained in this floorplan has been produced in good faith with due care. This floorplan has been measured in accordance with the Property Council of Australia method of measurement for residential property.

