

# LUNNA



LUNA  
IS HOME TO  
BEAUTY

# LUNA RISES UP AS AN ARCHITECTURAL MASTERPIECE

Luna rises from the ground as a timeless beauty with striking masonry columns reminiscent of Heritage Architecture that once adorned the neighbourhood. With a heritage of makers and artisans, Luna is a rare opportunity to find your forever home in a residence of exquisite quality and brilliant flexibility.



Artist impression, indicative only.



Artist impression, indicative only.



Artist impression, indicative only.

## WELCOME HOME TO PEACEFUL SERENITY

Welcome home to a peaceful sanctuary where Luna lights the way to your designer residence. Luna is a place where intentional communal spaces become seamless extensions of your home. Luna's contemporary form captures the imagination; each home is an individual expression of style and space, design and flexibility. From the moment you step inside your door, you'll feel a sense of pride.



Artist impression, indicative only.

Luna presents as a beautiful home; a place in which you'll be proud to reside, but at its core, it's an innovative exercise in future-facing design that empowers you to make your home truly your own.

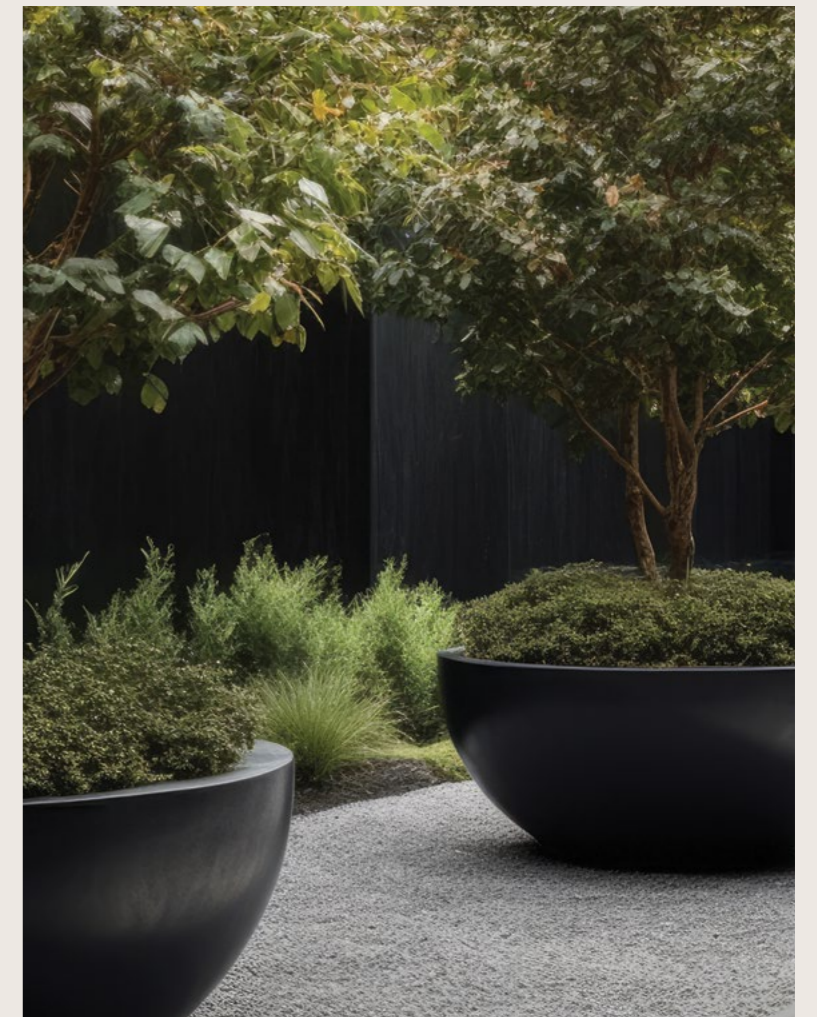


Artist impression, indicative only.



Artist impression, indicative only.

Step outside onto deep balconies that provide the perfect balance of indoor and outdoor living, where your own slice of greenery creates an oasis of reflective calm. Celebrate the beauty of oversized windows that welcome the light and air as you look out to views across the neighbourhood.







Artist impression, indicative only.



Artist impression, indicative only.

Step into rooms defined by luxe materials, smart design and exquisite finishes. Begin and end every day in your calming bedroom sanctuary which feels a world away from the bustling neighbourhood below. Master bedrooms are oriented towards open space, making the most of the sun and the breeze, elevating the natural elements as attractive district outlooks flood your room with light.

# A SECRET SANCTUARY INSPIRED BY NATURE

Luna is a green oasis perfect for gathering, it evokes immediate connection to nature while presenting stunning views across the district. Luna's rooftop sanctuary offers an exceptional 700sqm of landscaped terrace including BBQ facilities, sculptural seating elements and clever use of foliage, providing intimate spaces to relax with friends and family.



Artist impression, indicative only.





Artist impression, indicative only.

# LUNA LOVES LIVING LOCAL

Luna rises above what was once an industrial heartland. Moments from the city centre, airport and coastline, Luna is as contemporary as it is connected. Welcome home to a cultural destination with a myriad of shops, artisan stores, markets, cycleways, restaurants, cafés and culinary delights.



Fresh food providores, artisan bakers and baristas are at your convenience. Indulge in everything from Tuga Pastries, famous Portuguese tarts, Mecca Coffee's perfect brew or Lucio's wonderful Italian inspired cuisine.



Invite friends and family to enjoy a premium dining experience in the relaxed atmosphere of Bar No 5 with it's Italian inspired seasonal menu. Luna is catered for by purveyors of fresh produce and passionate restaurateurs.



Whether it's high tea or a quick stop by the artisan bakery and patisserie, feasting at The Grounds is all about indulging the senses. Prepare to dine in style amidst it's rustic charm.





# LUNA IS LIVING LOCAL

Located within Sydney's once industrial heartland, Green Square is quickly establishing itself as the capital of South Sydney's new urban sophistication.

Green Square's thriving precinct is not only within effortless proximity to the CBD, airport, coastline, major sporting facilities and educational institutions, it's the subject of a \$540 million urban renewal project which will see it evolve into a world-class neighbourhood for Sydneysiders.



Artist Impression

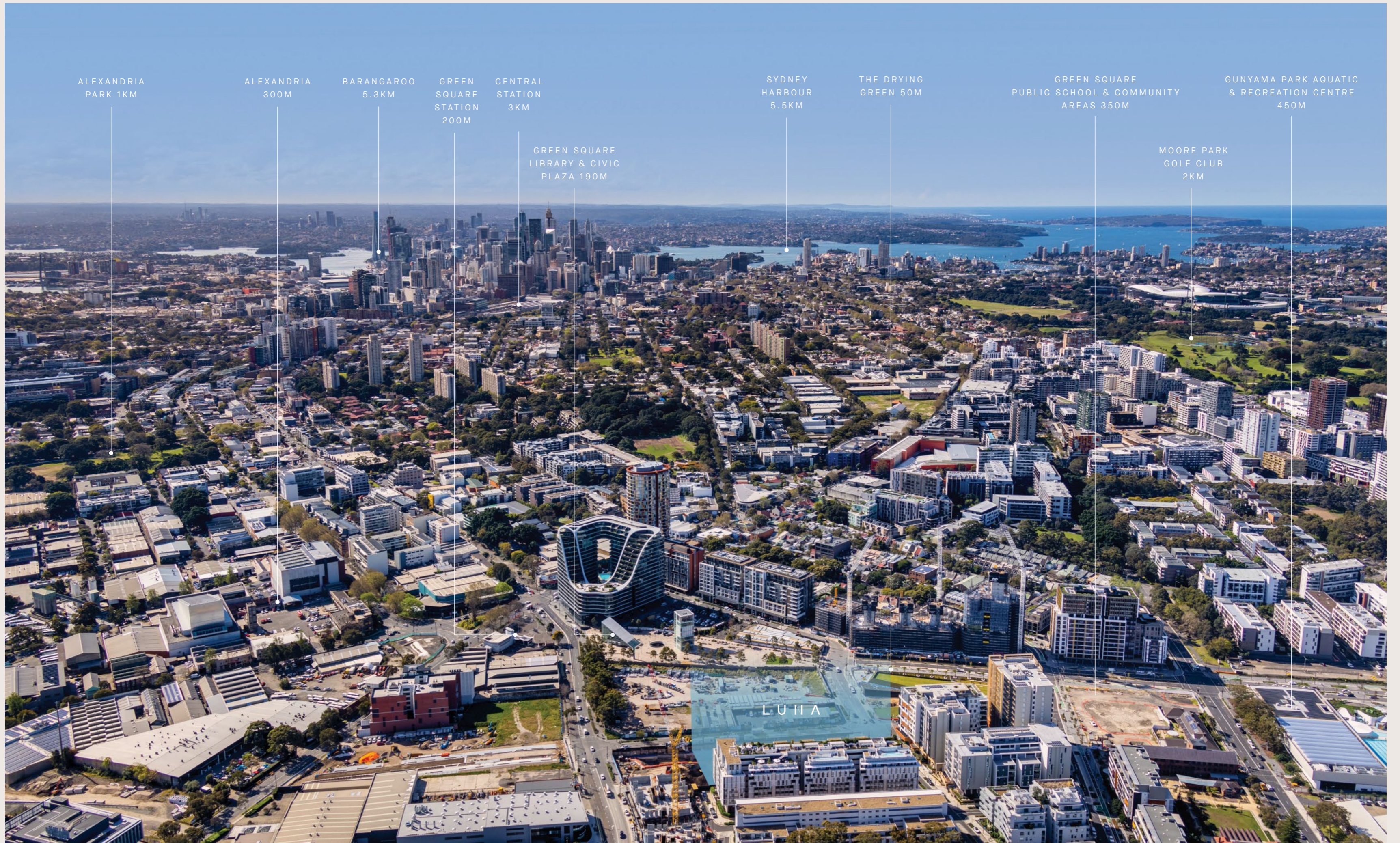
# SURROUNDED BY SYDNEY

Luna is it at the heart of a world famous city. Everything from Sydney's beautiful harbour and CBD to the glittering coastline is only moments away. The rolling waves of the cities beaches are mesmerising, while the stunning Bondi to Coogee coastal walk creates a sense of tranquility.



After a day at the beach return home through Centennial Park with its sweeping playing fields, beautiful ponds, little forests and stunning gardens. Closer to home is The Sydney Park brick kiln and chimney precinct. A gentle reminder of the areas rich industrial heritage.





ALEXANDRIA  
PARK 1KM

ALEXANDRIA  
300M

BARANGAROO  
5.3KM

GREEN  
SQUARE  
STATION  
200M

CENTRAL  
STATION  
3KM

GREEN SQUARE  
LIBRARY & CIVIC  
PLAZA 190M

SYDNEY  
HARBOUR  
5.5KM

THE DRYING  
GREEN 50M

GREEN SQUARE  
PUBLIC SCHOOL & COMMUNITY  
AREAS 350M

GUNYAMA PARK AQUATIC  
& RECREATION CENTRE  
450M

MOORE PARK  
GOLF CLUB  
2KM

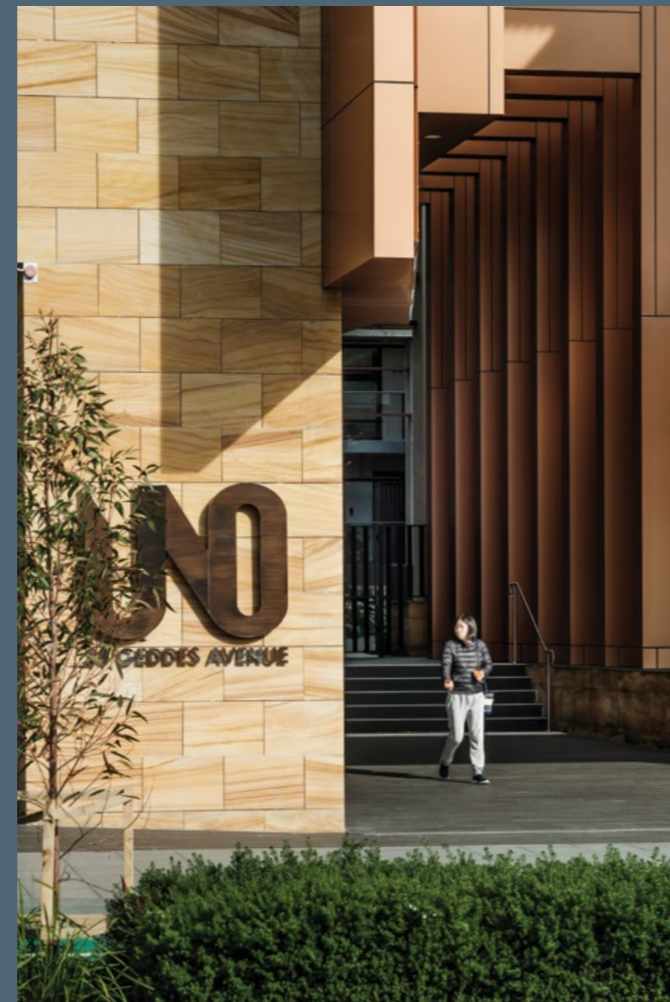
LUNA

# LUNA IS OUR LATEST LEGACY

## VISION BY BRIDGEHILL

Bridgehill constantly explores new ideas to deliver the best property developments without compromising on natural and cultural contexts. Bridgehill has received wide recognition by the industry and accepted important awards on architecture design, building quality as well as developments from organisations such as Master Builders Association of NSW, Urban Taskforce Australia and International Property Awards.

UNO BY BRIDGEHILL



GREEN SQUARE BY BRIDGEHILL

Green Square is undergoing a major process of regeneration. Bridgehill is proud to be at the forefront of this rejuvenation, partnering with master architects in creating contemporary residences for the neighbourhood. Uno and Jade now overlook Green Square with new buildings Alba and Luna underway.



ALBA BY BRIDGEHILL



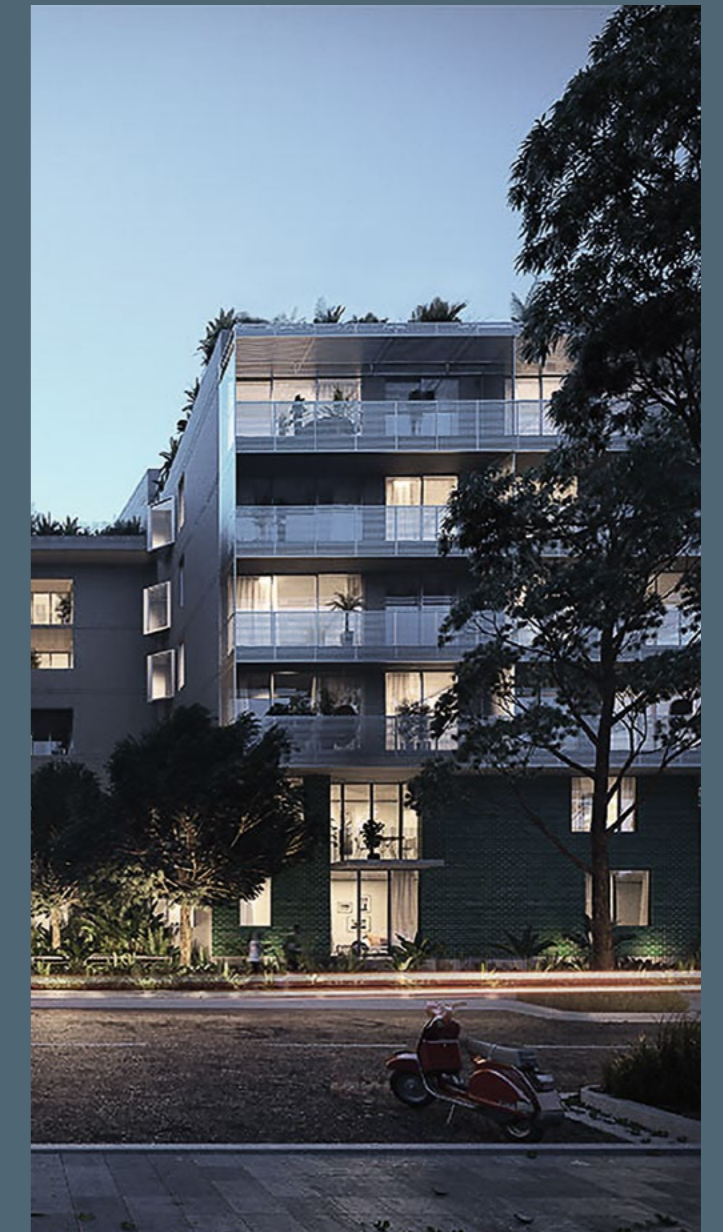
LUNA BY BRIDGEHILL

## MHN DESIGN UNION

MHNDU is a Sydney architectural collective committed to creating timeless spaces which cater to modern sensibilities. Dedicated to their craft for over twenty-five years, their ethos is unwavering: to cultivate experiential beauty in built form.

## WESTBOURNE CONSTRUCTION

Westbourne is a proud wholly owned Australian company who has just celebrated their 20th anniversary in the home unit construction industry. They have a reputation for on schedule and on budget project completion together with a comprehensive after sales service that delivers a seamless transition for new owner and/or occupiers. Westbourne is a specialist residential builder with a commitment to quality and customer care.



JADE BY BRIDGEHILL

LUNA IS A  
ONCE IN A LIFETIME  
OPPORTUNITY

LUNA BY BRIDGEHILL  
HOME TO BEAUTY  
LUNAGREENSQUARE.COM.AU  
1800 899 928

 WESTBOURNE

  
BRIDGEHILL  
GROUP

MHNDUNION

Disclaimer: Bridgehill does not guarantee, warrant or represent that the information contained in this advertising and marketing document is current, accurate, reliable or complete. You should make your own enquiries, including obtaining independent professional advice to determine your personal circumstances. Alternatively, we may refer you to any owner of any property we represent for you to conduct your own enquiries. We exclude all inferred or implied terms, conditions and warranties arising out of this document and any liability for loss or damage arising there from.

Brand & brochure by The Property Agency.



**BRIDGEHILL**  
GROUP