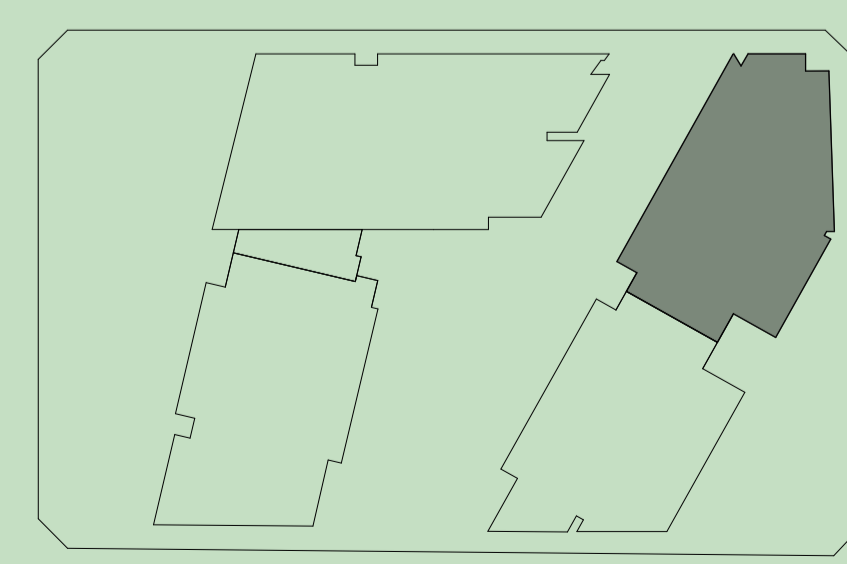


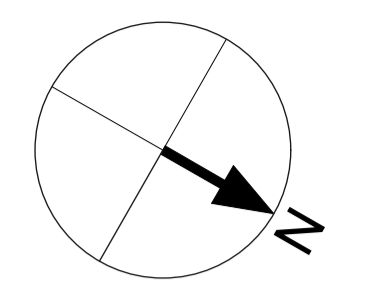
HILLS  
**SHOWGROUND**  
VILLAGE

**Level 3**  
**Building C**



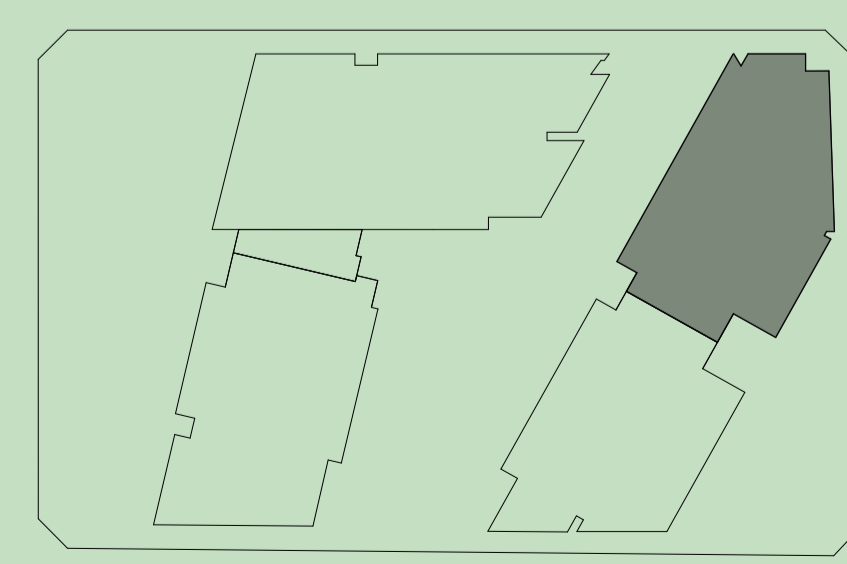
Note: updated February 2024. This plan is a guide only and does not constitute an offer or contract. Please note that changes may be made to the development during construction and elements such as areas, fittings, fixtures etc may change without notice. All parties should rely on their own investigation to validate this information as it is not guaranteed. No liability will be accepted for any inaccuracy or misstatement. Please note that changes may be made during construction. All toilets are subject to change to accommodate recent changes to BCA 2022.





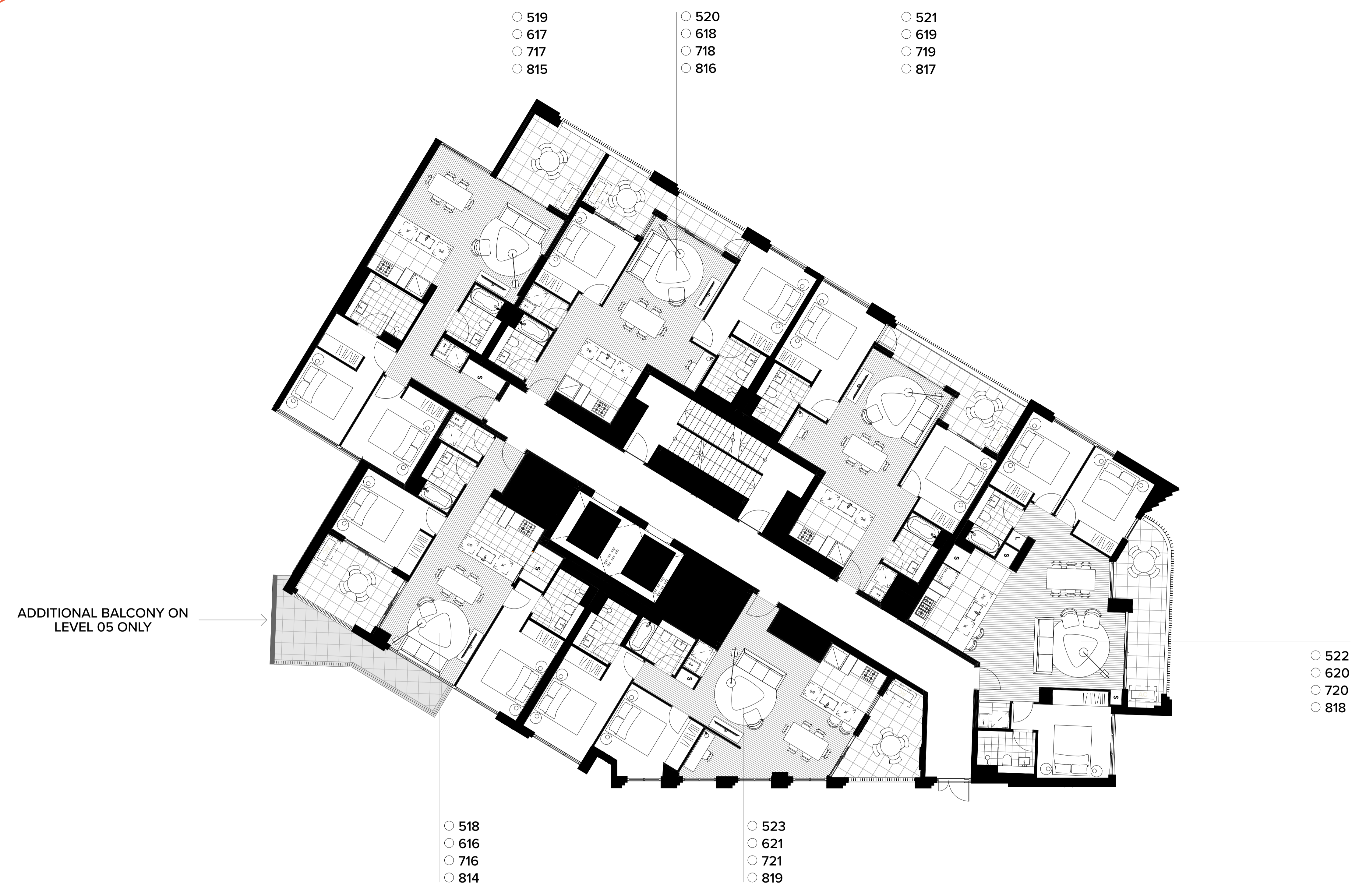
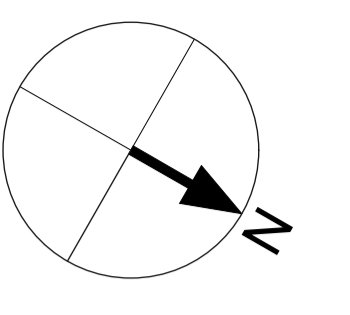
HILLS  
**SHOWGROUND**  
VILLAGE

**Level 4**  
**Building C**



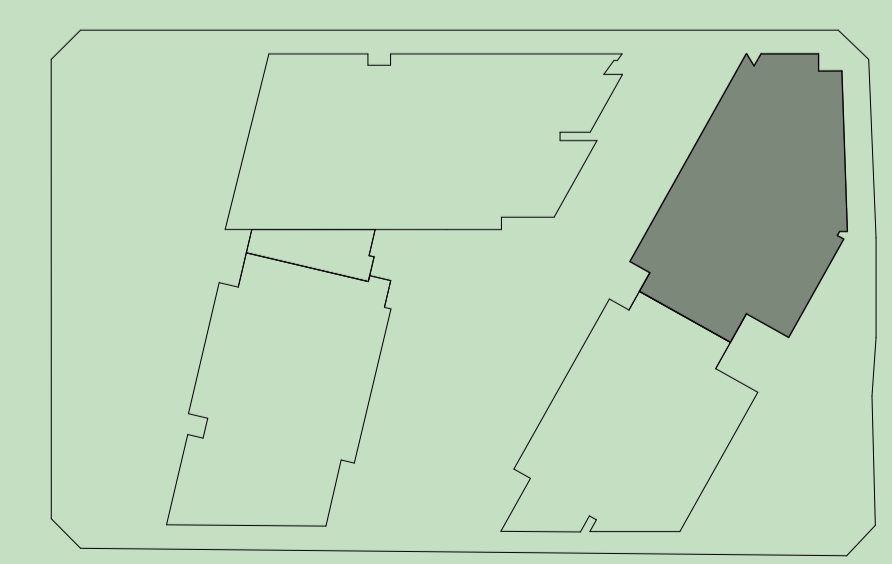
Note: updated February 2024. This plan is a guide only and does not constitute an offer or contract. Please note that changes may be made to the development during construction and elements such as areas, fittings, fixtures etc may change without notice. All parties should rely on their own investigation to validate this information as it is not guaranteed. No liability will be accepted for any inaccuracy or misstatement. Please note that changes may be made during construction. All toilets are subject to change to accommodate recent changes to BCA 2022.





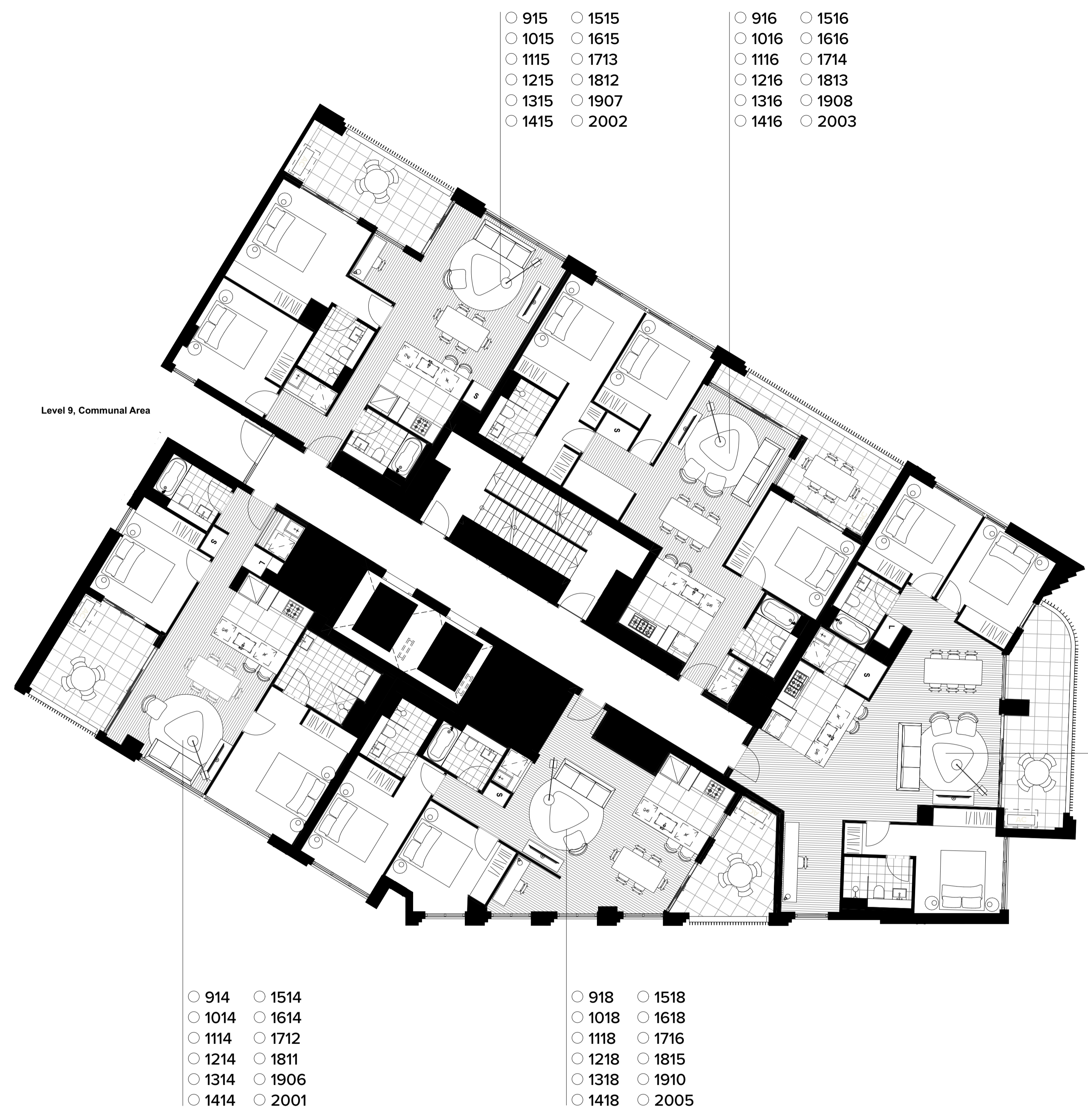
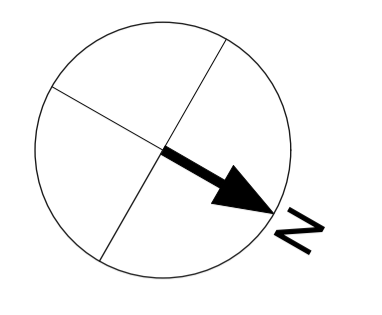
HILLS  
**SHOWGROUND**  
VILLAGE

**Level 5 - 8**  
**Building C**



Note: updated February 2024. This plan is a guide only and does not constitute an offer or contract. Please note that changes may be made to the development during construction and elements such as areas, fittings, fixtures etc may change without notice. All parties should rely on their own investigation to validate this information as it is not guaranteed. No liability will be accepted for any inaccuracy or misstatement. Please note that changes may be made during construction. All toilets are subject to change to accommodate recent changes to BCA 2022.





- 915    ○ 1515
- 1015   ○ 1615
- 1115   ○ 1713
- 1215   ○ 1812
- 1315   ○ 1907
- 1415   ○ 2002
- 916    ○ 1516
- 1016   ○ 1616
- 1116   ○ 1714
- 1216   ○ 1813
- 1316   ○ 1908
- 1416   ○ 2003

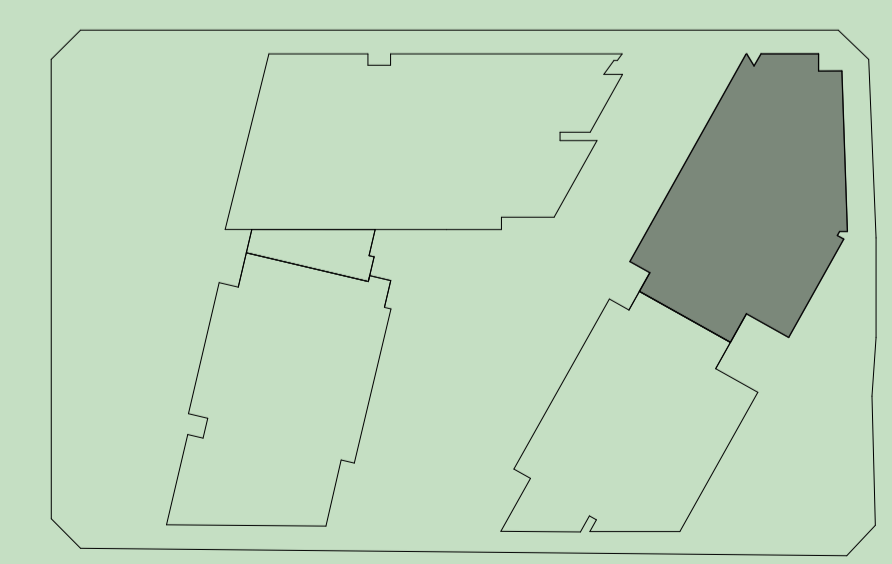
- 917    ○ 1517
- 1017   ○ 1617
- 1117   ○ 1715
- 1217   ○ 1814
- 1317   ○ 1909
- 1417   ○ 2004

- 914    ○ 1514
- 1014   ○ 1614
- 1114   ○ 1712
- 1214   ○ 1811
- 1314   ○ 1906
- 1414   ○ 2001

- 918    ○ 1518
- 1018   ○ 1618
- 1118   ○ 1716
- 1218   ○ 1815
- 1318   ○ 1910
- 1418   ○ 2005

# Level 9 - 21

## Building C



Note: updated February 2024. This plan is a guide only and does not constitute an offer or contract. Please note that changes may be made to the development during construction and elements such as areas, fittings, fixtures etc may change without notice. All parties should rely on their own investigation to validate this information as it is not guaranteed. No liability will be accepted for any inaccuracy or misstatement. Please note that changes may be made during construction. All toilets are subject to change to accommodate recent changes to BCA 2022.

HILLS  
**SHOWGROUND**  
VILLAGE

