

# CASTLE

RESIDENCES

203 CASTLEREAGH ST

SYDNEY



SHANGHAI  
UNITED







# CASTLE

RESIDENCES

-

203 CASTLEREAGH ST

SYDNEY



WHERE LUXURY REIGNS



## Contents

---

Heritage 10

Where the City Meets the Harbour 15

A Fine Masterpiece 21

Total Immersion 31

Nature Finds its Way 33

Discover the Beauty Within 41

Your Cosmopolitan Realm 61

Indulge in Life's Pleasures 67

Keep Sydney Moving 73

The Location 80

Introducing MGallery by AccorHotels 83

The Team 89

  
**CASTLE**  
 RESIDENCES



WHERE LUXURY REIGNS

WHERE LUXURY REIGNS

**Where Luxury Reigns**

An exclusive address on the doorstep of Sydney's Hyde Park. Castle Residences will soon become the city's ultimate CBD address. Like celebrated apartment houses on London's Hyde Park or New York's Central Park, it offers an unsurpassed Sydney experience of living.

In a graceful pairing of past and present, historic Porter House will house a luxury MGallery boutique hotel, while an elegant new residential tower soars above. Together, this unique fusion of luxurious living and exceptional hotel services will create a lifestyle unmatched in a coveted Hyde Park setting.

## Porter House

Built in 1876, historic Porter House is a rare surviving example of a commercial Victorian building within the central city. Five storeys high, the building's sandstone façade and elegant arched sash windows bring heritage significance to the street, nestled alongside an historic church. Inside, many original pressed metal ceilings remain along with its beautiful marble Art Deco stairs. Porter House with its simple and effective Italianate style has long been considered "an ornament" to this part of the city.

1875

Designed by JF Hilly.

1876

Built by builder Mr Eycles for Hugh Dixson & Sons, Tobacco manufacturer and philanthropist.

1877

Featured in Town and Country Journal.

1879

Described as "an ornament to that portion of the city" by The Illustrated Sydney News.

1891

After building a massive warehouse on Elizabeth & Park, Hugh Dixson leased Porter House to tenants. First to W. W. Campbell, furniture manufacturer and then to George Johnson & Sons, leather merchants.

1909

Sydney Council approved plans to add a fifth storey, designed by Burcham Clamp.

1940s

A three storey addition to the rear was constructed, extending the cartway as an enclosed space. At that time, the cartway floor raised with new terrazzo flooring and staircase.

1960s

The shopfronts were modified to the current configuration, and current awning added.

2016

Shanghai United purchased the site for the development of Castle Residences.



*DIXSON & SONS,  
Importers and Manufacturers of Tobacco.*

Porter House is a significant surviving example of 1870s Free Classical commercial architecture.



HERITAGE

HERITAGE

Artist's Impression



WHERE THE CITY  
MEETS THE HARBOUR



### The World's Most Beautiful City

Live in the heart of one of the world's most beautiful cities. From its glittering blue harbour and stunning green parks, to its magnificent architectural icons and the famous sails of the Opera House, Sydney shines like no other place on earth.

WHERE THE CITY MEETS THE HARBOUR

WHERE THE CITY MEETS THE HARBOUR





WHERE THE CITY MEETS THE HARBOUR

WHERE THE CITY MEETS THE HARBOUR



A FINE MASTERPIECE

### A Building for All Time

This statement tower has been many years in the making. In a masterful collaboration, architect Candelapas Associates, interior designer StudioAria, and developer Shanghai United have combined historical and contemporary form in an extraordinary way – all set against the backdrop of Sydney's shimmering city scenery.

There's a seamless language that flows between the heritage charms of Porter House to the timeless modernity of the new tower in the sky above.

The celebrated design team has taken inspiration from historic buildings on Castlereagh Street to produce something equally, if not more, beautiful here.

Created as a building 'for all time', Castle Residences connects to the incredible amenity that surrounds it to effortlessly capture Sydney's easy cosmopolitan mood.





A FINE MASTERPIECE

A FINE MASTERPIECE

Artist's Impression

*“I can imagine, in years to come,  
that Porter House and the new  
tower building will merge into one  
in people’s consciousness, as if the  
entire assembly always coexisted.”*

Angelo Candalepas, Architect



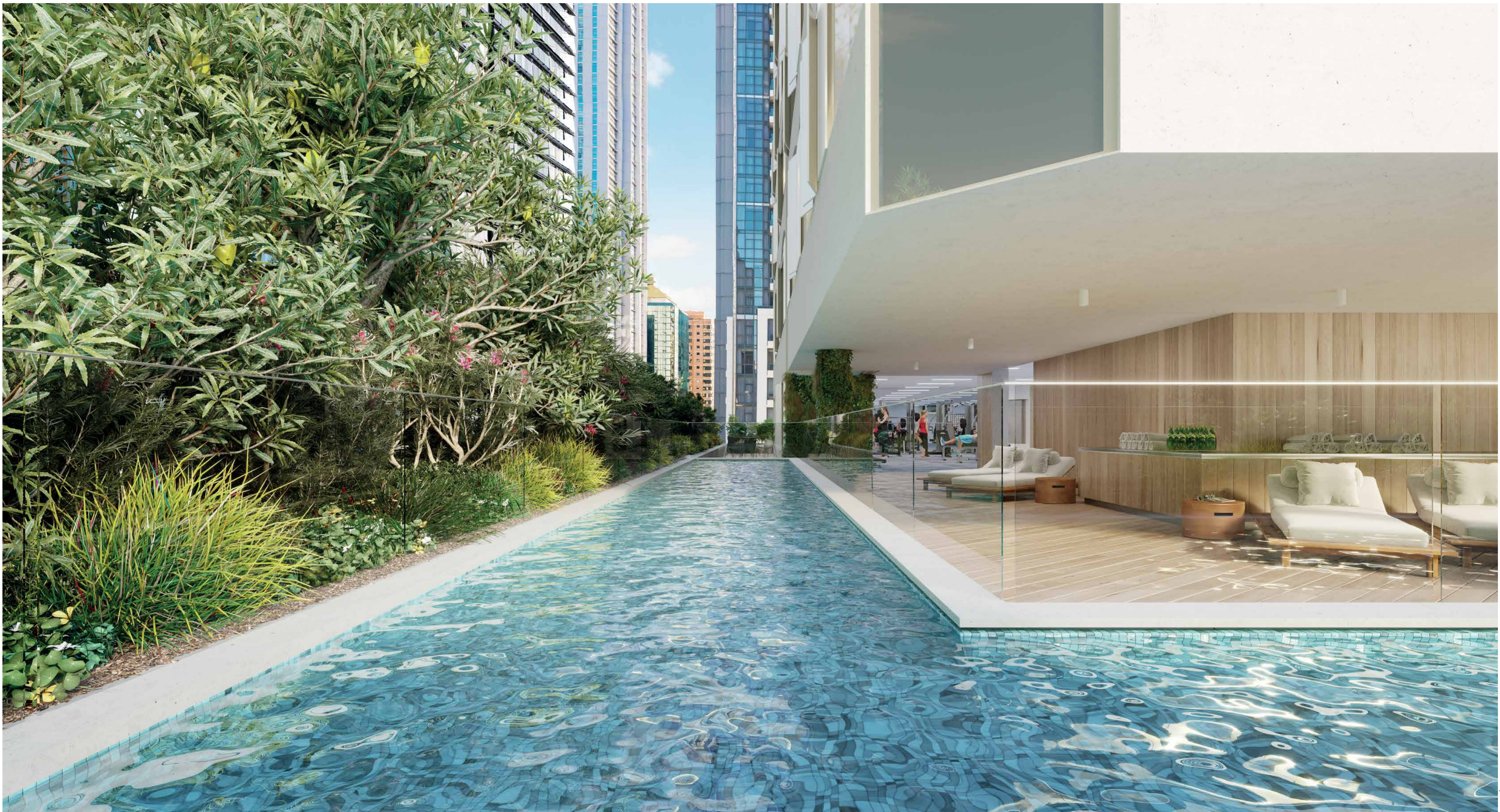
A FINE MASTERPIECE

A FINE MASTERPIECE



A FINE MASTERPIECE

A FINE MASTERPIECE



TOTAL IMMERSION

TOTAL IMMERSION

Artist's Impression

### Total Immersion

Discover what extraordinary feels like. Experience exceptional hotel luxuries and world-class amenities, right where you live. Enjoy access to hotel facilities including: restaurants, bars, pool and the hotel business centre. From concierge and room service, to in-residence housekeeping and maintenance, this outstanding residential development weaves hotel services and facilities with luxury living to create unparalleled experiences.





NATURE FINDS ITS WAY

### Live Majestically

Find sanctuary in the city.

Living so close to the flourishing green of Hyde Park brings a special quality to Sydney's metropolitan life throughout the seasons.

Step outside and immerse yourself in the city's pleasures and amusements. The surrounding area is studded with landmarks and brimming with galleries, theatres, restaurants and luxury stores. This is Sydney's cultural heart, where everything you need is within walking distance. Sydney Harbour, Martin Place, The Queen Victoria Building, Sydney Opera House, The Art Gallery of NSW, David Jones – the city's icons and monuments radiate from your front door. Like a new jewel in Sydney's crown, Castle Residences offers grand Hyde Park CBD living with true international appeal.





**Your Beautiful City Garden**

Hyde Park's lush green lawns and grand avenues of figs is a place that you'll soon call "my front garden". Spending time here is one of Sydney's most beautiful yet simple pleasures. Catch your breath by the War Memorial's reflection pond at Hyde Park's southern end or the Archibald Fountain at the other with the commanding St Mary's Cathedral as a backdrop.



NATURE FINDS ITS WAY

NATURE FINDS ITS WAY



NATURE FINDS ITS WAY

NATURE FINDS ITS WAY

### Living on the Park

See yourself here, at the vibrant epicentre of this great city. Castle Residences prized setting, mere paces from the green expanse of Sydney's Hyde Park, is a position held by only a scattering of residential buildings.



DISCOVER THE  
BEAUTY WITHIN

### Signature Style

Discover the beauty within where the accomplished team at StudioAria have brought life to the interiors. Their keen eye for luxurious contemporary styling has produced classic, modern, and uncomplicated signature residences.

Beautiful natural materials and textures form a harmonious whole. Elegant pale limestones, oak timbers, and soft grey hues are complemented by shots of graphite and bronze to create layers of luxury throughout the spaces. The arched architectural motif seen in the building's signature scalloped windows is hinted in subtle curves found in elements such as countertops, etched mirrors, and cabinetry.

Magnificent Miele and Gaggenau entertainer kitchens, free-flowing living spaces and rich artisan detailing are designed for enduring elegance and appeal.



DISCOVER THE BEAUTY WITHIN

Artist's Impression - Studio Apartment

DISCOVER THE BEAUTY WITHIN



DISCOVER THE BEAUTY WITHIN

DISCOVER THE BEAUTY WITHIN

Artist's Impression - Penthouse



*“It is about the quality of the spaces  
and the kind of experiences they offer.  
The classic yet contemporary styling  
offers a perfect canvas upon which  
owners can create their own individual  
worlds to reflect their tastes  
and lifestyles”*

*Kate and Paul Greenwood, StudioAria*

DISCOVER THE BEAUTY WITHIN

DISCOVER THE BEAUTY WITHIN

Artist's Impression - Penthouse





DISCOVER THE BEAUTY WITHIN

DISCOVER THE BEAUTY WITHIN

Artist's Impression - 3 Bedroom Apartment



DISCOVER THE BEAUTY WITHIN

DISCOVER THE BEAUTY WITHIN

Artist's Impression - 3 Bedroom Apartment



DISCOVER THE BEAUTY WITHIN

DISCOVER THE BEAUTY WITHIN

Artist's Impression - 3 Bedroom Apartment



DISCOVER THE BEAUTY WITHIN

DISCOVER THE BEAUTY WITHIN

Artist's Impression - Dual Key Apartment



DISCOVER THE BEAUTY WITHIN

DISCOVER THE BEAUTY WITHIN

Artist's Impression - Penthouse Bedroom

### Down to Every Detail

In every room, from the grand living areas to your private quarters, perfect details come together to shape beautifully realised residences that will stand the test of time.

Subtle colours and elegant silhouettes are combined masterfully in the material palette to create indulgent spaces for rest and relaxation.



DISCOVER THE BEAUTY WITHIN

DISCOVER THE BEAUTY WITHIN

PRADA



YOUR COSMOPOLITAN  
REALM

**Your Cosmopolitan Realm**

As the city comes to life, there are endless ways to fill a leisurely day or evening. Browse the luxury labels such as Gucci, Chanel, Ermenegildo Zegna, and Rolex. Enjoy freshly shucked rock oysters and a champagne brunch at one of the city's many celebrated dining rooms such as Bambini Trust, Alpha Restaurant, and Tetsuya. It's all part of the rich panorama at your front door.







The Strand Arcade

### Something Special in Store

Beautiful shopping experiences, decadent restaurants, and chic bars host a who's who of Sydney's social scene. All around, prestige stores house many of the world's most desirable luxury brands such as Bvlgari, Prada and Hermès.





INDULGE IN LIFE'S  
PLEASURES

### Dining Experiences

Proximity to a roll call of fine dining establishments and after-dark entertainment makes the Hyde Park precinct one of Sydney's most sought-after addresses. From stylish cafés and open-air dining to intimate cocktail lounges, the city's diverse dining experiences offer a warm welcome from buzzing Sydney city crowds.

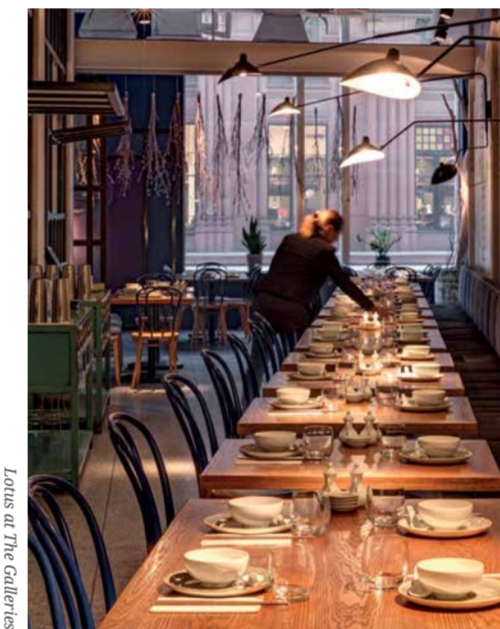


INDULGE IN LIFE'S PLEASURES

Joos de The Colliers



INDULGE IN LIFE'S PLEASURES



Latus at The Galleries

Alpha Restaurant



Alpha Restaurant, Sydney

### Culinary Indulgence

Enjoy triple-cloth dining at one of the many nearby hatted restaurants. Head out for an alfresco supper on warm summer nights. Sample share plates at informal long tables with friends at one of Sydney's more relaxed venues, or stroll to Chinatown for all the colour and excitement of Asian streetlife.

INDULGE IN LIFE'S PLEASURES



KEEP SYDNEY MOVING

### Bold Transformations

Major changes are on the horizon for Sydney's CBD, with billions of dollars in infrastructure projects now revitalising the look and experience of the city centre, which Castle Residences is right in the heart of. Step outside your door and take advantage of the new light rail which will connect you from the harbour's edge of Circular Quay, to the Eastern Suburbs. Additional upgrades to key train stations are planned, as well as new priority city centre bus routes and separated bike lanes making it easier to travel through the city's heart.

On the CBD's western harbour edge, the \$6 billion transformation at Barangaroo will include a new ferry hub, linked by Wynyard Walk, taking pedestrians quickly through to Barangaroo's new Headland Park, harbour walks, lifestyle retail, and entertainment precincts.





KEEP SYDNEY MOVING

KEEP SYDNEY MOVING

Town Hall

### Changing Streets of Sydney

Castle Residences is uniquely positioned at the forefront of Sydney's changing streetscape. Light rail, boulevards, piazzas, vibrant laneways, and pedestrianised streets will create a more attractive, vibrant and connected place to live, work and explore.



KEEP SYDNEY MOVING

Circular Quay Tram Station

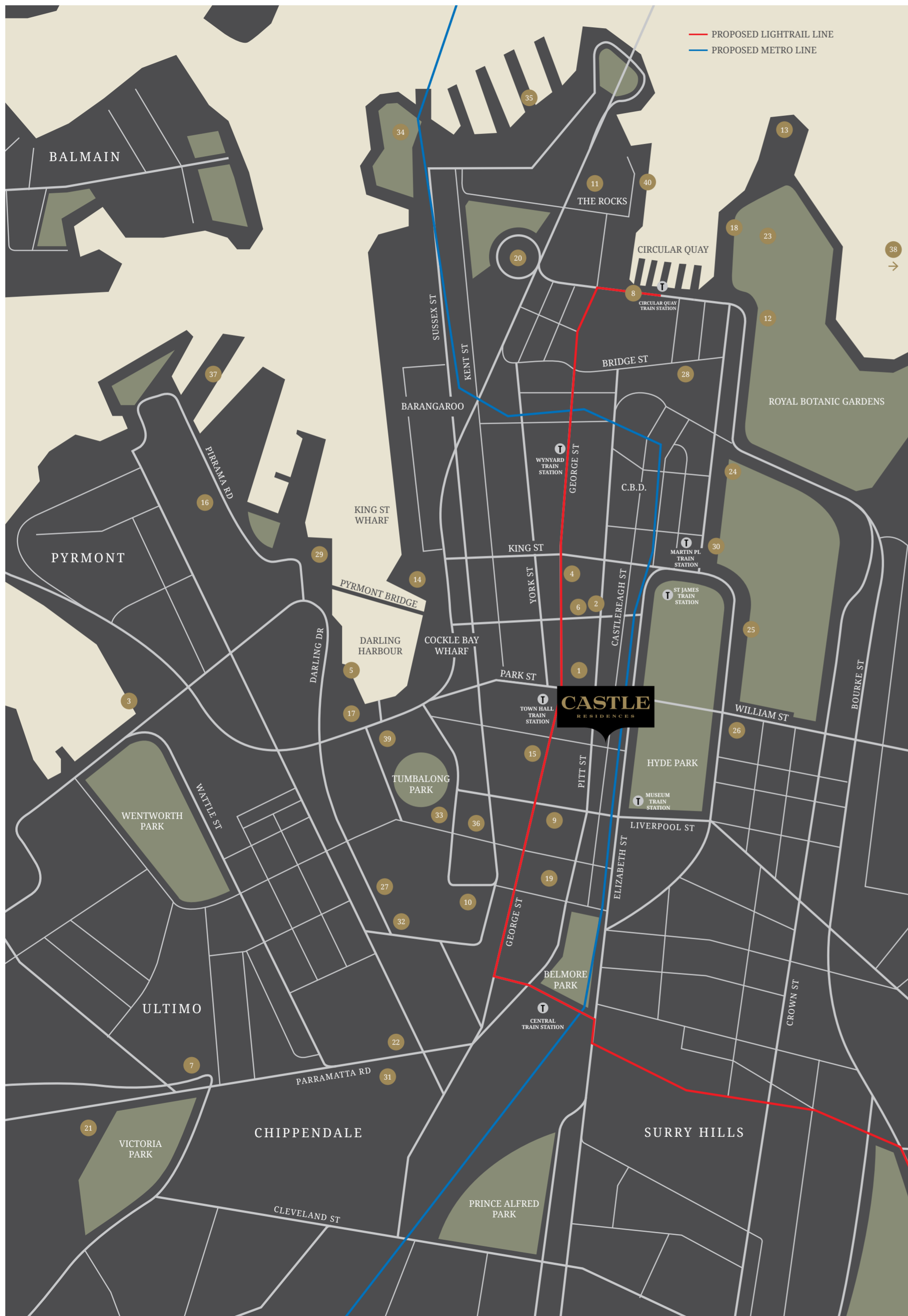


KEEP SYDNEY MOVING

### Connectivity

Sydney's new light rail will see sleek, comfortable, whisper-quiet trams whisking passengers through the city from Central to Circular Quay every few minutes. It will move thousands of people without noise and delay, acting as a catalyst to revitalise the entire city centre and fostering a welcoming promenade culture.





**CASTLE**  
RESIDENCES

**Retail**

- 1 Queen Victoria Building (6 minutes walk, 450m)
- 2 Westfield Sydney (7 minutes walk, 600m)
- 3 Sydney Fish Market (29 minutes walk, 2.3km)
- 4 The Strand Arcade (9 minutes walk, 750m)
- 5 Harbour Side Shopping Centre (15 minutes walk, 1.2km)
- 6 Sydney Tower (6 minutes walk, 450m)
- 7 Broadway Shopping Centre (29 minutes walk, 2.3km)
- 8 Gateway Sydney (19 minutes walk, 1.5km)
- 9 World Square (5 minutes walk, 450m)
- 10 Market City (11 minutes walk, 1.0km)

**Entertainment and Dining**

- 11 The Argyle (23 minutes walk, 1.9km)
- 12 Sydney Conservatorium of Music (19 minutes walk, 1.5km)
- 13 Sydney Opera House (28 minutes walk, 2.1km)
- 14 Sea Life Sydney Aquarium (15 minutes walk, 1.1km)
- 15 Event Cinemas (4 minutes walk, 300m)
- 16 The Star Casino (24 minutes walk, 1.8km)
- 17 ICC Sydney (16 minutes walk, 1.2km)
- 18 Aria (23 minutes walk, 1.9km)
- 19 Capitol Theatre (10 minutes walk, 750m)

**Education**

- 20 Fort Street Public School (27 minutes walk, 2.1km)
- 21 University of Sydney (32 minutes walk, 2.5km)
- 22 University of Technology (21 minutes walk, 1.8km)

**Museum and Heritage**

- 23 Government House (24 minutes walk, 1.9km)
- 24 State Library of NSW (12 minutes walk, 1.0km)
- 25 St Mary's Cathedral (8 minutes walk, 600m)
- 26 Australian Museum (5 minutes walk, 400m)
- 27 The Powerhouse Museum (17 minutes walk, 1.4km)
- 28 Museum of Sydney (16 minutes walk, 1.3km)
- 29 Maritime Museum (20 minutes walk, 1.5km)
- 30 The Mint (10 minutes walk, 750m)

**Park and Recreation**

- 31 Central Park Sydney (19 minutes walk, 1.5km)
- 32 Ian Thorpe Aquatic Centre (16 minutes walk, 1.3km)
- 33 Chinese Garden of Friendship (11 minutes walk, 800m)
- 34 Barangaroo Reserve (32 minutes walk, 2.1km)

**Places**

- 35 Walsh Bay (30 minutes walk, 2.4km)
- 36 Chinatown (8 minutes walk, 600m)
- 37 Jones Bay Wharf (28 minutes walk, 2.2km)
- 38 Woolloomooloo Wharf (23 minutes walk, 1.8km)
- 39 Darling Quarter (10 minutes walk, 800m)
- 40 Sydney Overseas Passenger Terminal (24 minutes walk, 1.8km)

Walkability from 203 Castlereagh Street. Data referenced from Google and are used as a guide only.

THE LOCATION

THE LOCATION



  
INTRODUCING  
MGALLERY BY  
ACCORHOTELS



### Introducing MGallery by AccorHotels

The best of two worlds at one iconic address. Castle Residences fuses its luxury CBD living with the international MGallery boutique hotel brand to create a unique destination and extraordinary experiences for residents and guests. As a privileged member of this world-class community, you'll enjoy an exceptional level of comfort and amenity.

#### Hotel services will be accessible to residents via personalised iPad Application.

##### Services will include:

Dedicated room service.

In-residence catering.

In-residence housekeeping.

In-residence maintenance.

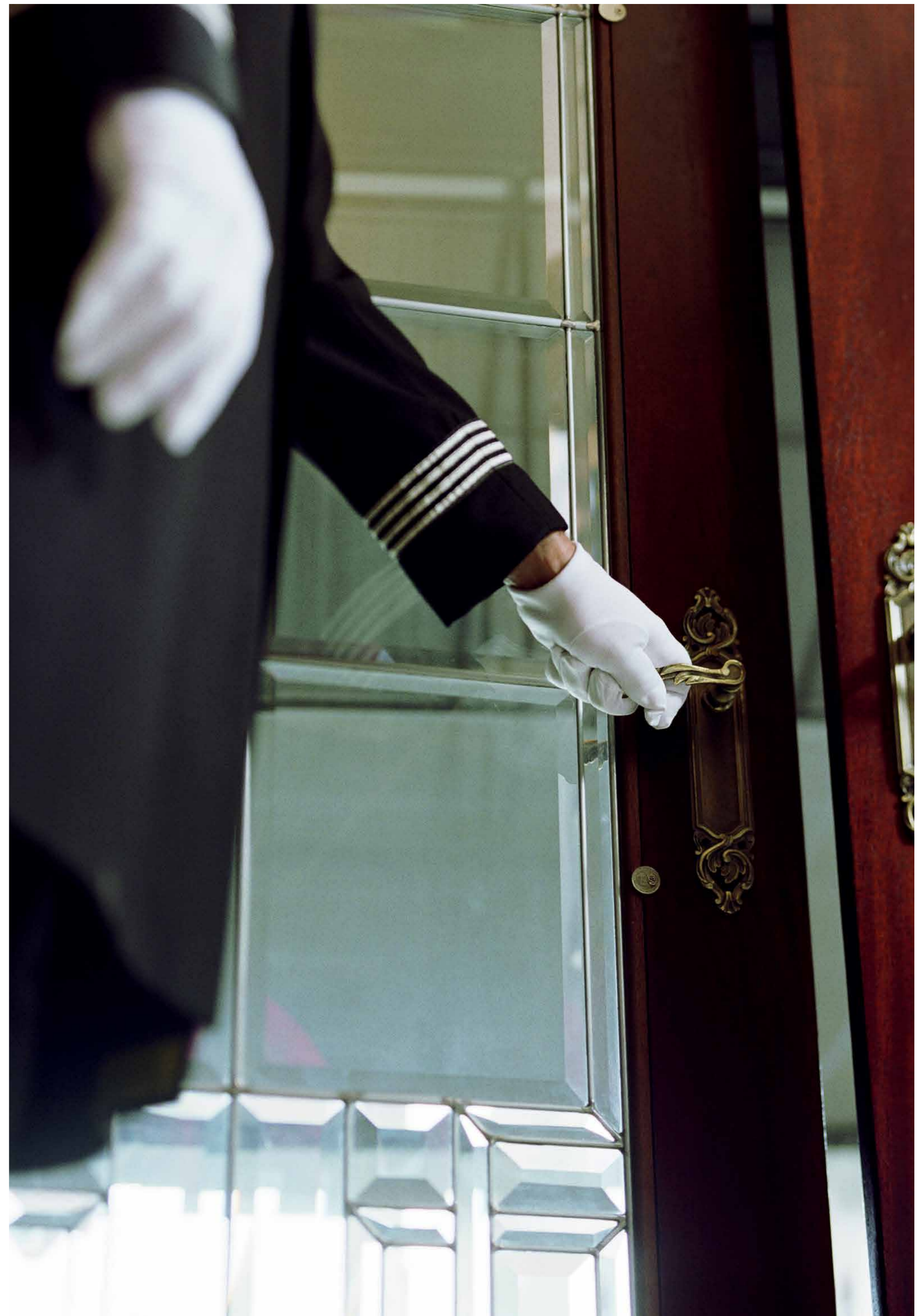
Access to hotel facilities including restaurants, bars, gym, pool and business centre.

Concierge service for restaurant and taxi bookings plus mail and package deliveries.

24 hour security.

Valet parking services.

General service bookings including couriers, dry cleaning and laundry.





INTRODUCING MGALLERY BY ACCORHOTELS

Grand Hotel La Cloche, France



Tarifa Forest Resort, Bosnia and Herzegovina



Queens Hotel, Cheltenham, United Kingdom



Hotel Nemzeti Budapest, Hungary



Hotel de la Cite Carcassonne, France

### AccorHotels Worldwide

AccorHotels brings together over 4,100 hotels in 95 countries across five continents. Everyday this world class team continue to invent the hospitality of tomorrow and bring to life their passion for guests. AccorHotels are far more than a worldwide leader, their energy is put into spreading the most powerful promise in the hospitality profession: Welcoming people.

INTRODUCING MGALLERY BY ACCORHOTELS



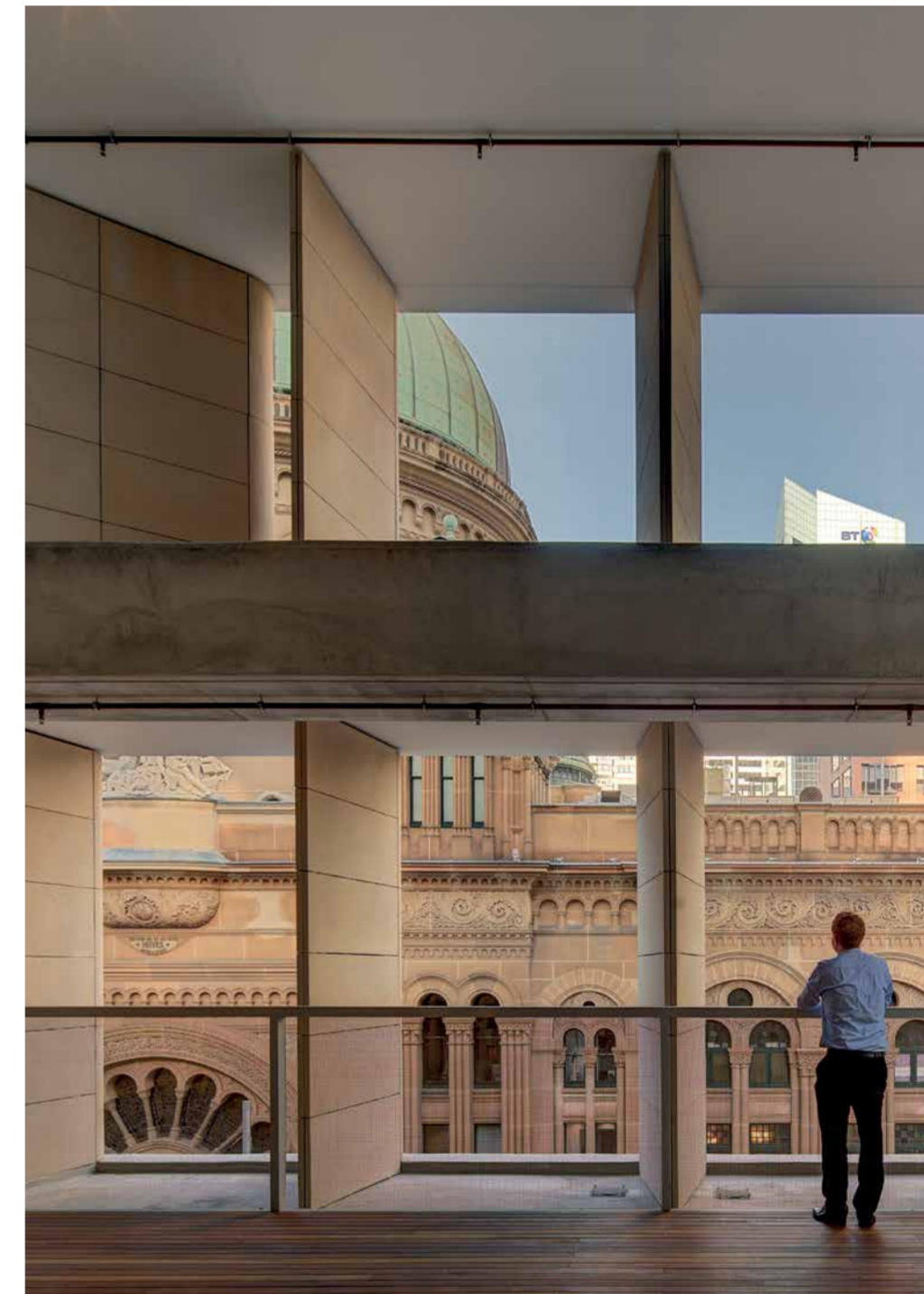
THE TEAM

**The Architect**

**CANDALEPAS ASSOCIATES**

Named one of the 100 most interesting emerging architectural firms in the world, Candalepas Associates brings great depth and refinement to this important new city building. The careful hand of founder, Angelo Candalepas, is seen in every aspect – from its perfect spatial proportions to its timeless marriage of classical and contemporary forms.

The award-winning architectural practice has an accomplished portfolio of work acknowledged both within Australia and internationally, with more than 500 projects to their name. In Castle Residences, Candalepas Associates has created a truly imaginative and memorable architectural tribute to Sydney. One that evokes a thrilling sense of its time and place, housing residences of immense simplicity, comfort and splendour.



AHL Headquarters - 478 George Street

The Interior Designers

studioaria

StudioAria specialises in delivering inspirational interiors and designs to discerning clients for luxury projects worldwide.

From offices in Sydney and Shenzhen, co-directors Kate and Paul Greenwood bring more than 25 years' experience to their work.

The global team's high-end hotel, resort, spa and speciality residential projects span Hong Kong, New York, Moscow, Bangkok, Kuala Lumpur and cities across China. Within Castle Residences, StudioAria has drawn upon their signature ability to produce spaces that are long on glamour, line and spatial flow.

In both the boutique hotel and residential spaces, interiors are designed in concert with the architecture to produce memorable experiences and living environments that will retain their elegance over time.



Kuala Lumpur Five Star Hotel, Malaysia

### The Developer



Castle Residences is the flagship Australian project for international property giant, Shanghai United Real Estate. In this landmark location, they seek to create a truly great building that will take pride of place in the very heart of Sydney – a legacy for the future. Based in Shanghai, the company has national and global interests spanning hotel, commercial and residential development, operation and management; financial and capital markets; retirement healthcare; education; mining; and arts; with funds in excess of AU\$19 billion.

Four standards of excellence, setting new benchmarks in innovation, design and construction with their visually stunning property developments. The international developer partners with industry leaders and the best design professionals to develop projects of exceptional quality for investors and residents alike.







**CASTLE**  
RESIDENCES

203 CASTLEREAGH ST

SYDNEY



CASTLERESIDENCES.COM.AU | 1800 775 685

**CBRE**

Disclaimer: Information contained within this document is for presentation purposes only and is subject to change at anytime without notice. Changes may be made to the proposed development during the further planning and development process. There is no warranty given as to the accuracy, currency or completeness of the information contained within it and it is not intended to be relied upon in anyway. The information contained in this brochure is intended to be used as a guide only. Unless otherwise stated, the information contained in this mini brochure does not constitute an offer or inducement to enter into a legal binding contract, or form part of the terms and conditions of sale of any product of the Developer, Shanghai United. Designed by The Property Agency.



Handwriting practice lines on the left page of a notebook. Each line consists of a solid top line, a dashed midline, and a solid bottom line, providing a guide for letter height and placement. The page contains 20 such lines, each with a series of blank spaces for writing.

Handwriting practice lines on the right page of a notebook. Each line consists of a solid top line, a dashed midline, and a solid bottom line, providing a guide for letter height and placement. The page contains 20 such lines, each with a series of blank spaces for writing.

CASTLERESIDENCES.COM.AU  
1800 775 685

CBRE