

PARKER

BY *Fridcorp*™



PARKER



THE NEXT CHAPTER OF APARTMENT LIVING
AT BEYOND

BY *Fridcorp*™

A HOME ON THE PARK
BROUGHT TO YOU BY
FRIDCORP WITH DKO

EXPERIENCE PARKER,
A LIFESTYLE BEYOND
IMAGINATION



01

A vision
beyond.



Views to Sydney CBD.

A
PRECINCT
BY

Fridcorp[™]

We believe in going beyond.
Where design enriches daily life.
Where amenities shape
personal rituals.
Where retail caters
to everyday needs.
Where people gather to
connect. To share experiences
rich in culture beyond the home.
Where your environment
both calms and inspires.
You deserve more.
We deliver more.
Beyond by Fridcorp.



A life beyond home.

Our vision is to create a precinct that celebrates the vibrant character of this eclectic suburb. Designed in harmony with an expansive landscape, the organic form of Beyond's architecture integrates with the neighbouring parklands and bustling streets of Hurstville.

At Beyond's parkside edge, Parker apartments now provide contemporary havens connected to the lush gardens. This collection of carefully considered residences featuring elevated finishes is ready to live.

Within Beyond is St Clair Lane, an evolving retail precinct featuring a full-line Woolworths Supermarket now open, and a variety of dining and services to come in 2024. Once complete, St Clair Lane will become a vibrant destination that enhances a sense of community.



SPACES THAT CONNECT TO
THE NEIGHBOURING PARKLANDS,
ENHANCING A GREATER SENSE
OF WELLBEING



Design beyond
imagination.

AN EXTRAORDINARY
PARKSIDE ADDRESS WITHIN
A GARDEN PRECINCT

Nature beyond



your doorstep.

Beyond is a vibrant new precinct that celebrates the popularity and prosperity of Hurstville. The organic design articulates sculptural forms that blend naturally into the surroundings. Its mix of beautifully crafted residences, green spaces and evolving retail offerings will create a lively atmosphere, day and night.



*Under Construction
PARKER AT BEYOND

A home on the park, brought to you by Fridcorp with DKO.

The design incorporates architectural and landscape elements which interweave throughout Beyond, creating a constant narrative between the home and nature.

Expansive landscaping connects Beyond with Kempt Field while the considered architectural design and organic form frames stunning views from the parkside residences. This fluidity of design speaks to life at Beyond, where spaces interact gracefully.

As you step inside, your eye is drawn to windows framing the lush landscape and views to the CBD and Botany Bay. The highly crafted residences with clean lines and curved, sculptural form, transcends in timeless design, creating extraordinary experiences that enhance the every day.





ST. CLAIR LN.



Artist Impression



Named after the local studio where the Bee Gees recorded their first hit, St Clair Lane will be a dynamic retail laneway in the heart of Beyond.

Launching in 2024, a curated selection of retail, services and eateries will surround the new Woolworths Supermarket. This vibrant collection of amenities enhances daily life for residents and the local community.



The ultimate in convenience — a full-size Woolworths now open, with a collection of diverse retail offerings to come in 2024.

Take advantage of a safe and quick shop at Woolworths. Fresh produce, missing ingredients or late-night cravings are easily sourced with the convenience of a supermarket right on your doorstep.



Home beyond
the everyday.

THOUGHTFULLY DESIGNED LOBBY
SPACES CREATE A WELCOMING
ENTRY BEYOND EXPECTATIONS



Experience extraordinary design and a sense of home.

Each 1, 2, and 3-bedroom home has been carefully designed with the end occupant in mind. As you enter, you experience the natural light and considered details, where efficient floorplans create a spacious sanctuary.

Sophisticated and tactile interiors feature a refined, textural palette while floor-to-ceiling windows in premium apartments frame views of Botany Bay and the CBD.

Two colour schemes hero natural materials, including stone benches, oak flooring and brushed brass finishes. From wellness systems to clever design elements such as the bespoke bar joinery, Parker homes enhance daily life.





The kitchens are designed to encourage families to gather, share stories and prepare meals together. SMEG appliances balance style and performance, while soft overhead lighting creates a soothing ambience.

Muted tones are offset by brass accents.



PARKER AT BEYOND



A refined, sophisticated canvas allows residents to add their personal touch.

Light hues and soft lines create openness in the design.



Views to Botany Bay.

Floor-to-ceiling windows in a selection of apartments create bright and airy havens.



With parklands at your doorstep, Parker is the ultimate pet-friendly address.



The organic geometry of the facade continues in the bathrooms with softly contoured, bespoke designed baths and basins, and mirrors to house your everyday needs.



Two fresh colour schemes here natural materials such as stone benchtops, oak timber flooring and brushed brass finishes.

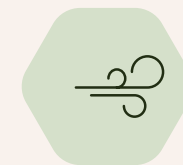


Wellness by Fridcorp enhances the natural elements of air, water and light, to further complement health and wellbeing at Beyond, creating a standard of living in every home.

WELLNESS BY

Fridcorp™

DESIGN THAT ENHANCES DAILY LIFE.
DISCOVER WELLNESS ON A HOLISTIC SCALE AT BEYOND.



Air Purification

BETTER AIR

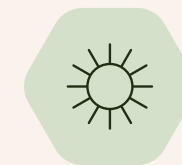
Our air purification system will eliminate up to 99% of allergens, viruses and pathogens to improve air quality in your home.



Water Filtration

BETTER WATER

Advanced filtration systems remove contaminants to supply crisp, clean and great tasting water.



Circadian Lighting

BETTER LIGHT

Lighting technology mimics circadian rhythms to assist in regenerative sleep and a balanced mind and body.

O4

Spaces beyond
the everyday.

EXCLUSIVE FACILITIES
TO ENHANCE DAILY RITUALS

A private bookable dining room connects to the lush Beyond garden.

Beyond is a place to nurture your well-being — enhancing a sense of belonging.

Explore the many integrated areas designed for both socialising and solitude. Start your day with a morning run, yoga, or a group Tai Chi session, and unwind in the sauna.

Entertaining also takes on a new dimension with spaces for memorable occasions, games nights, barbecues and dinner parties. The outdoor courtyard is perfect for special events and intimate gatherings and seamlessly flows to indoor areas.

Relax with friends around the Mahjong table or enjoy a game of Pool. Or wander through the gardens for some respite, taking in the lush green surrounds.

Discover your own rhythm in Beyond's private spaces.



The beautifully appointed lounge bar is ideal for birthdays and other celebrations, just moments from home.



Relax in the resident's lounge that is light and airy by day and moody and atmospheric by night.



Enjoy a game of Pool in this luxuriously appointed space.



Wellbeing



BEYOND LEVEL • 2



Beyond offers a setting for every mood and occasion, with indoor and outdoor spaces covering an expansive podium. Wander through the Beyond gardens for a moment

of quiet restoration or host a private event in the dining room. Entertain or relax, gather with old friends and make new ones in a precinct that has come to life.

beyond senses.



Retreat to the sauna for moments of quiet restoration, or reconnect with nature and indulge in quiet contemplation on the meditation deck perched above Kempt Field.

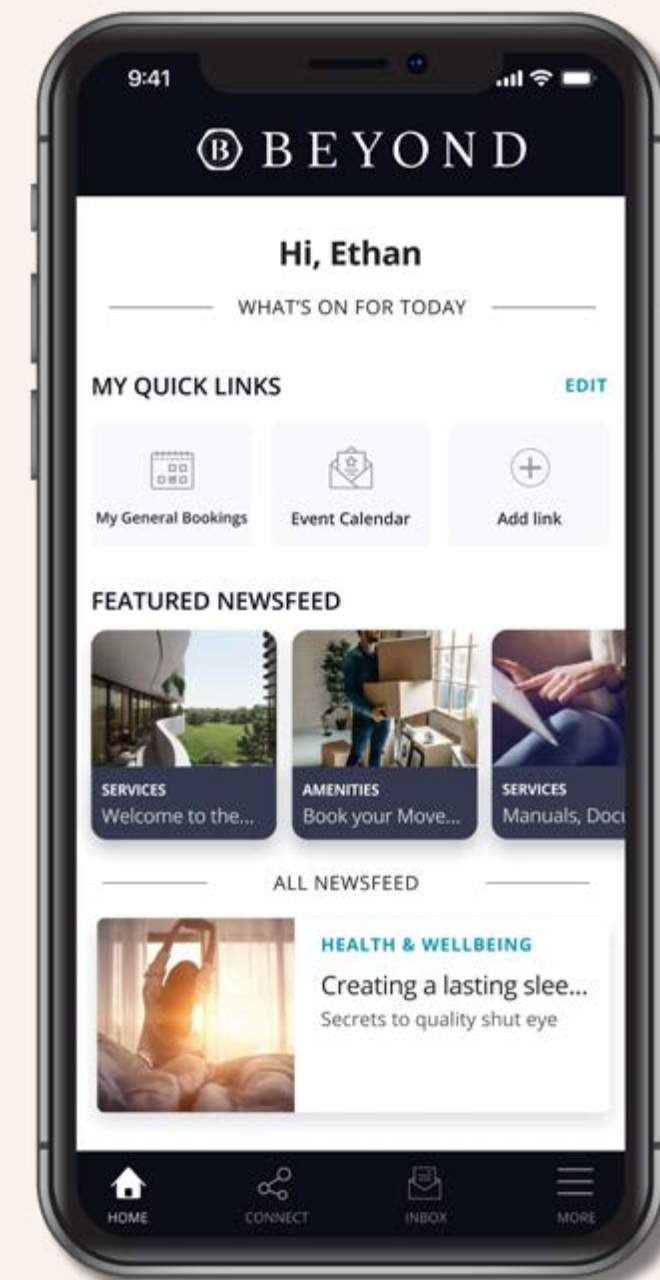


Invite your personal trainer or Pilates instructor for private lessons in this state-of-the-art fitness space. The timber material palette creates a relaxing yet sophisticated setting for your daily workout.





The Beyond Community App is designed to make life simple and foster a sense of belonging.



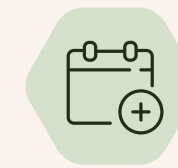
MAKE CONNECTIONS

Connect with the Beyond community, create shared-interest groups, discover new passions and explore local events and activities.



STAY IN THE LOOP

Keep connected to what's happening in the local community, from events to retailer offers.



VIRTUAL CONCIERGE

From arranging your move in to booking the private spaces for special occasions, you can do it all from the convenience of home, work or on the move.



EXPERIENCE

The Beyond Community App is supported by our customer experience team who are with you at every step ensuring you have a seamless experience and to help you settle in to your new home.

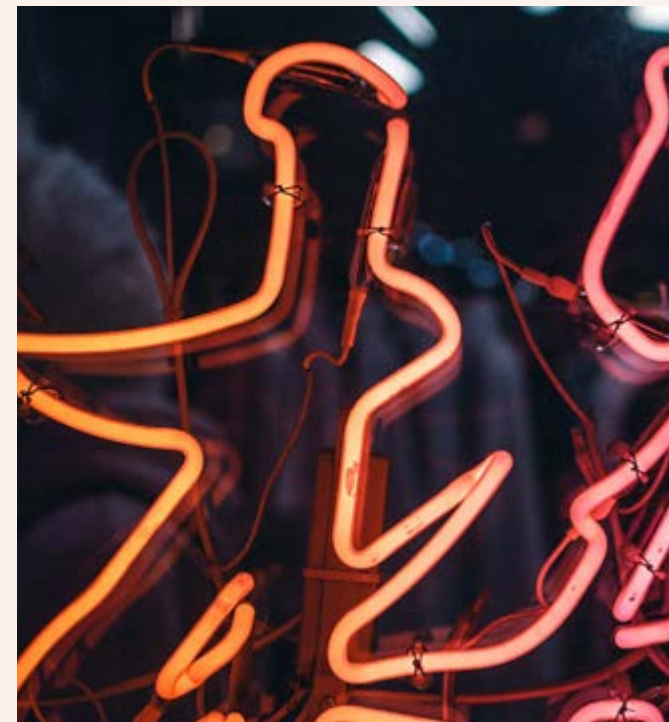
Connection
beyond
neighbourhood.

Discover Hurstville's unique culture and eclectic offerings.

Hurstville's multicultural community gives the suburb a vibrant energy and a unique character. The mid-century shopfronts of Forest Road are home to family-owned restaurants offering traditions from around the world— many with richly authentic Asian flavours.

This lively suburb boasts a diverse community and the convenience of retail and transport at your doorstep. Westfield provides easy access to national and international brands and entertainment, while Hurstville Central features a supermarket and array of services, stores and food offerings above the local station.

For quieter moments, lush parklands and inviting beaches offer expansive spaces to relax in the great outdoors.



NEW FLAVOURS,
NEW DESTINATIONS —
AN IRRESISTIBLE FEAST
FOR THE SENSES



Left, top and above: Humphrey's Hotel, Hurstville.
Photography credit: Declan Blackall.

Authentic eateries and tasty
delicacies are all on the
Hurstville menu.

Discover a place where dining, cultural experiences and nature connect. Enjoy easy access to shopping, sports grounds, schools and endless lifestyle opportunities.



BOTANY BAY RAMSGATE BEACH	7 MIN DRIVE
DOLLS POINT	8 MIN DRIVE
BRIGHTON LE SANDS	10 MIN DRIVE
SYDNEY AIRPORT	11 MIN DRIVE
GEORGES RIVER NATIONAL PARK	14 MIN DRIVE
SOUTHERN BEACHES CRONULLA BEACH	23 MIN DRIVE
KAMAY BOTANY BAY NATIONAL PARK	24 MIN DRIVE

CAFE & DINING

- Oregano Bakery
- Hurstville Chinese Restaurant
- Allawah Hotel
- Westfield rooftop dining
- Mina Bakery
- Nara Lounge
- Humphrey's Hotel
- Niji Sushi Bar

ENTERTAINMENT / LIFESTYLE

- Hurstville Entertainment Centre
- Hurstville Civic Theatre
- Hurstville City Library
- Hurstville City Museum & Gallery

SHOPPING

- Woolworths & Beyond retail laneway
- Westfield Shopping Centre
- Hurstville Central
- Kogarah Town Centre
- Ramsgate Foodies & Farmers Market
- Hurstville Growers Market

MEDICAL

- Hurstville Private Hospital
- St George Private Hospital
- St George Public Hospital
- Hurstville Town Medical Centre
- Wales Medical Centre
- Hurstville Medical Practice
- Waratah Private Hospital

SPORTS / RECREATION

- Brighton Le Sands Beach
- Woodville Park
- Kempt Field
- Hurstville Oval
- Kogarah Bay Sailing Club
- Botany Bay Yacht Club
- Skate Bowl at Olds Park
- Hurstville Golf Club
- Poulton Park
- San Souci Wharf
- Aquatic and Leisure Centre
- Arrowsmith Dog Park
- Netstrata Jubilee Stadium
- Wellness Department

EDUCATION

- Sydney University
- University of Technology Sydney
- Georges River College & Hurstville Boys Campus
- St George Christian School
- Tafe NSW St George Campus
- Good Start Early Learning Childcare
- Hurstville Public School
- Hurstville South Public School
- Sydney Technical High School
- Woniara Road School
- Danebank Anglican School for Girls
- Bethany College
- My Little Angels Learning Academy
- SDN Hurstville Children's Education and Care Centre
- St Mary Star of the Sea Catholic Primary
- Hurstville Adventist School

HURSTVILLE TO THE CBD — 20 MINUTES



HURSTVILLE
STATION

ALLAWAH
STATION

ROCKDALE
STATION

SYDENHAM
STATION

REDFERN
STATION

CENTRAL
STATION

EXPRESS TRAIN **20**
MINS

A connected lifestyle.

Just 16km from the city, Hurstville is a highly connected suburb. An express train takes you to the CBD in 20 minutes, and the airport is a 15-minute drive from your door.

Cook Park and the white sands of Lady Robinsons Beach and Brighton Le Sands are also just 10 minutes from Parker.



Beyond —
the team.



DEVELOPED BY

Fridcorp

Inspired by the intersection of art and architecture, Fridcorp is one of Australia's most design focused property developers.

Our love of design is evident in every Fridcorp project. We respond to the individual needs of today's buyers and work with Australia's leading architects, interior designers and artists.

Fridcorp is a privately owned Australian company with an enviable record of achievement in property development, consistently delivering on budget and time, exceeding the expectations of the market and buyers.

We identify emerging markets and create developments that generate long-term investment potential and growth for investors and owner-occupiers.



ARCHITECTURE AND AMENITIES

DKO

DKO Architecture is one of Australia's leading innovative design practices specialising in Masterplanning, Urban Design, Architecture and Interior Design with a particular focus on the design and delivery of residential developments. DKO is passionate about developing innovative solutions that respond to the richness, complexity and diversity of the Australian lifestyle. At the core of DKO's design philosophy lies a commitment to an urban architecture that serves people, respects place and stands the test of time.

DKO's passionate and accomplished design team focus on sharp, intelligent and articulated design. With an understanding of how a space works, adapts and moulds with the user, DKO's intuitive approach encourages collaboration on each project, bringing individual strengths and experiences together to maintain a crisp, lively and reflective angle to their designs.



INTERIORS

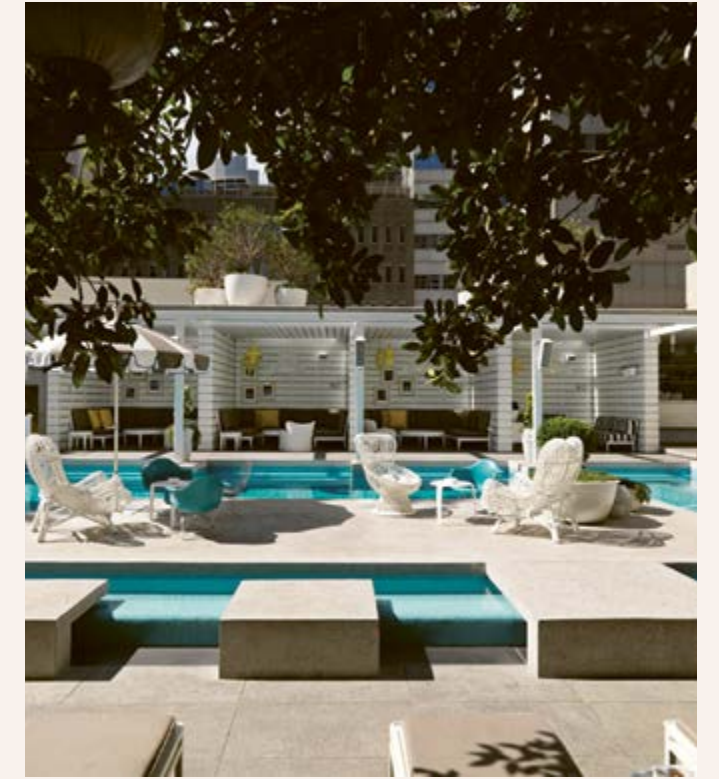
Woods Bagot

Woods Bagot thrives on making places people love.

Placing human experience at the centre of the design process, Woods Bagot is a global studio of visionary designers and place makers renowned for creating distinctive social and living destinations which reflect the needs of modern living and local culture.

Woods Bagot projects make a clear statement on the uniqueness of every experience. There is great importance in the design process on sensory human inputs – be it architecture, food, or fashion – in the creation of a strong design narrative which will shape the lives, aspirations, and personal experiences of the people who will call these apartments home.

Through diligent research and creative endeavour, our residential design projects address current needs and flexibly accommodate changes to come. These goals are achieved through a collaborative dialogue with the developer and by harnessing the collective global intelligence of our 16 studios in Australia, Asia, the Middle East, Europe, and North America.



LANDSCAPE

360 Degrees

Since 2001, 360 have been involved in significant projects for public and private sector clients locally, regionally and internationally. We work across all sectors and scales - in healing, learning, working, city, living and playing environments. We collaborate with our clients and consultants to create unforgettable, transformative and evolving landscapes.

360 was founded as a design-driven studio. We are dedicated to detail with expertise engaged throughout each commission. We build and work with project-specific teams of like-minded thinkers, designers and communicators.

We share ideas inside and outside the studio. And what we learn from one project cross pollinates with our thinking on all our others.



BY
Fridecorp[™]

BEYONDHURSTVILLE.COM.AU

