

BELONG



BEYOND

BY *Fridgecorp*™

BELONG

BEYOND A HOME,
A PLACE TO BELONG

2220

BEYOND

BY *Fridecorp*[™]



We believe in going beyond.

Where design detail defines extraordinary spaces.

Where amenities are a way of life.

Where people gather for stories to be shared and cocktails stirred.

Where intelligent design enriches your daily routine.

Where your environment both calms and inspires.

You deserve more, we deliver more.

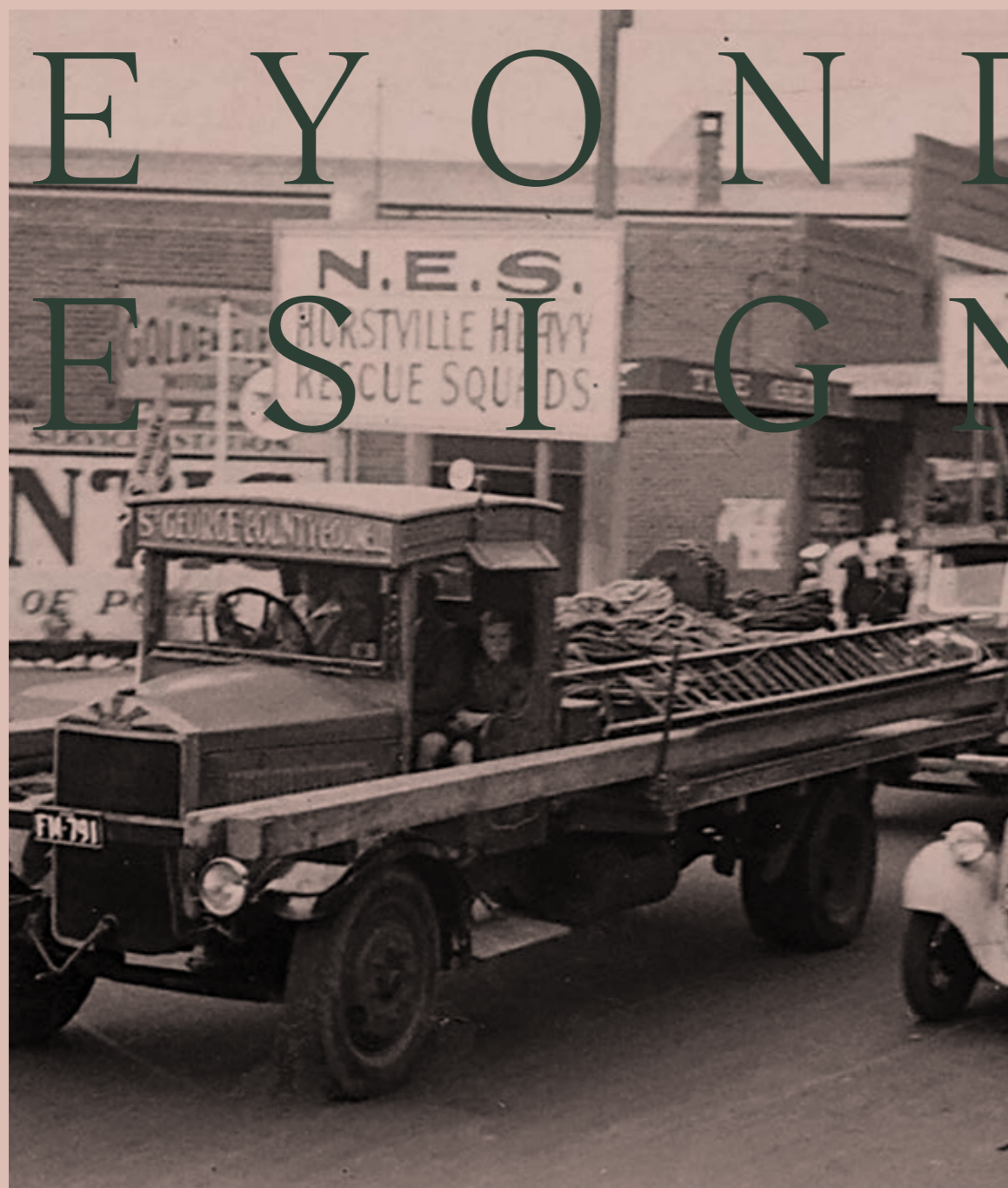
Beyond by Fridcorp

HURSTVILLE

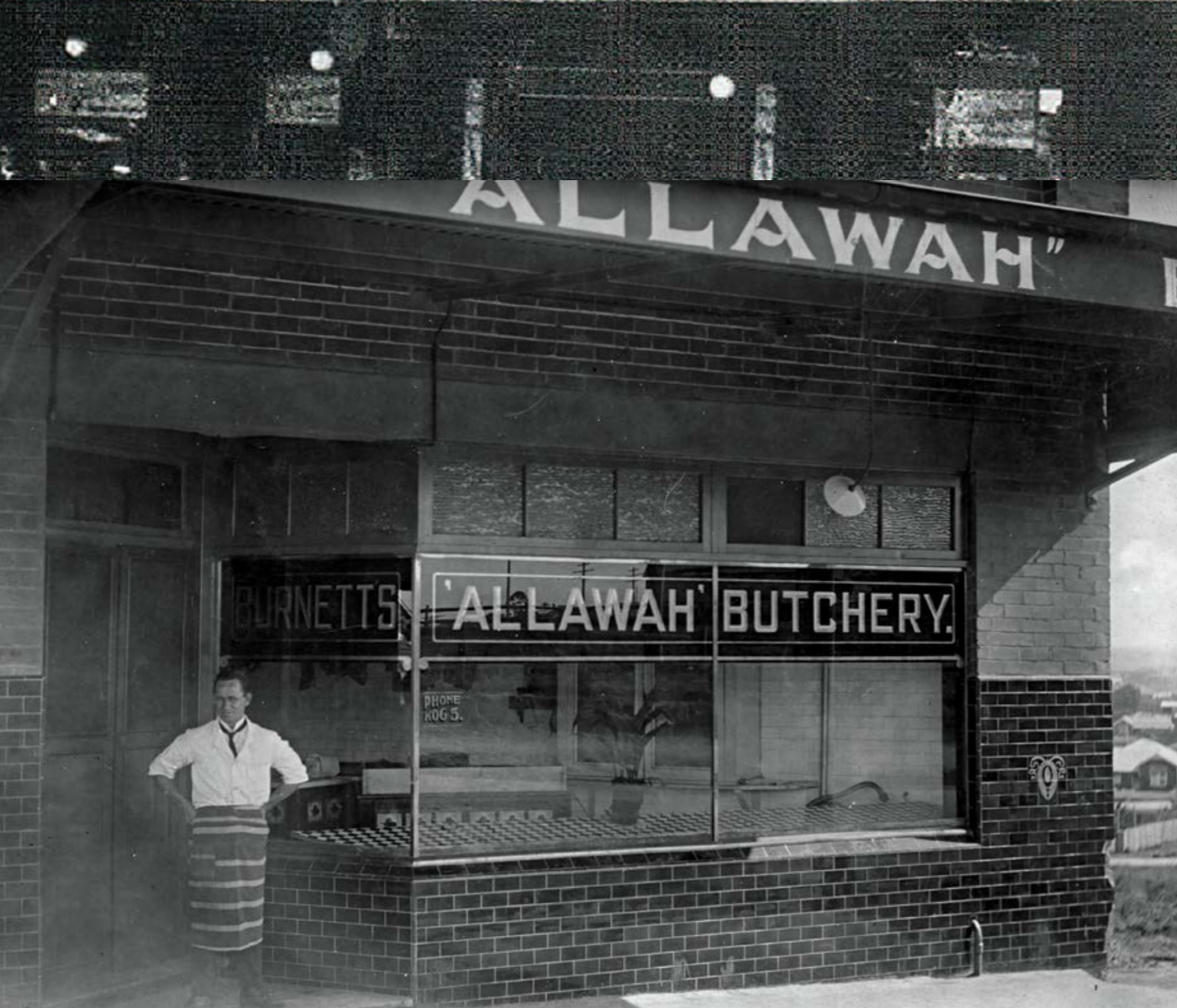
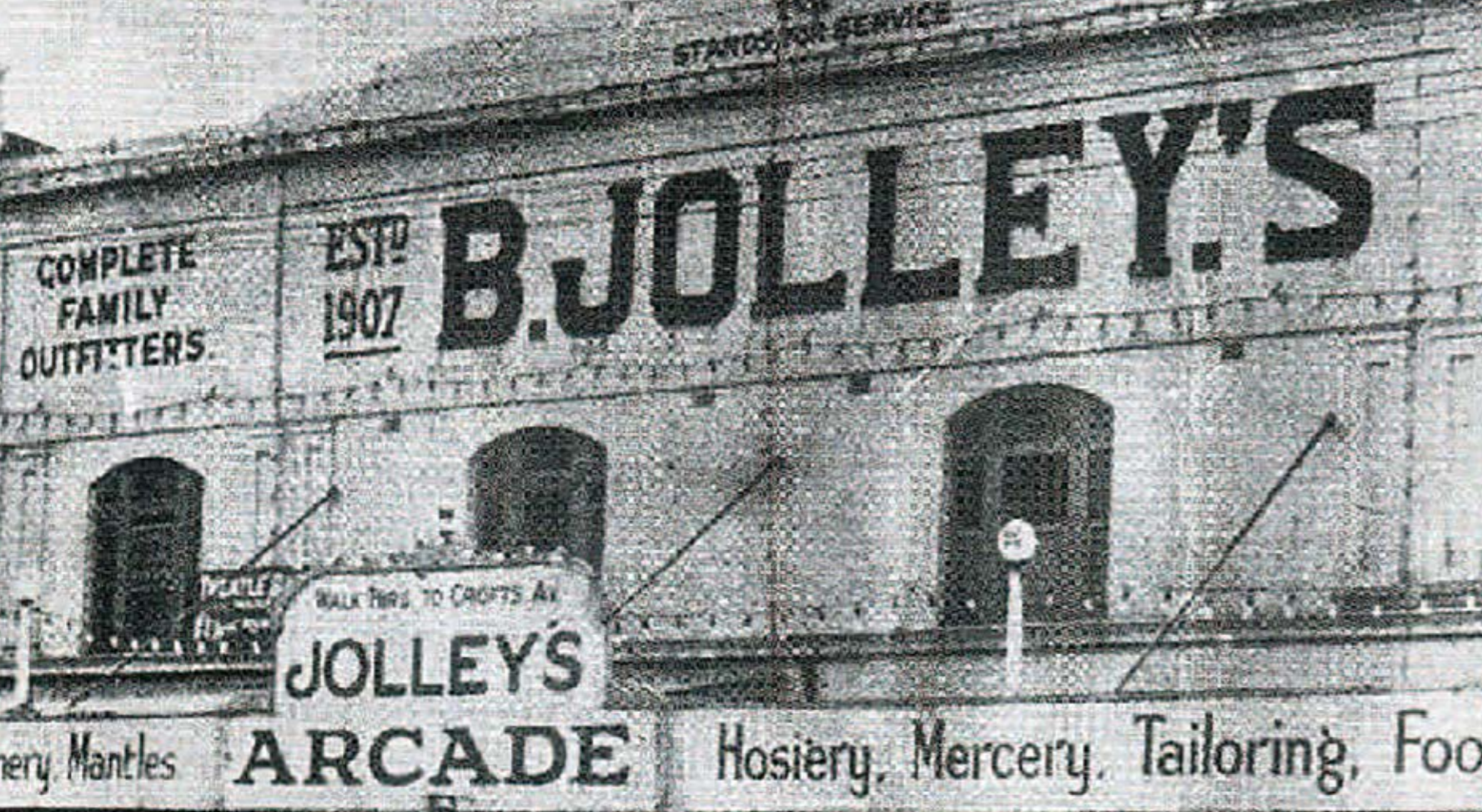
222 

SYDNEY

T H E
B E A U T Y
B E Y O N D
D E S I G N



2 2 2 0



Hurstville offers the quintessential Sydney lifestyle in a single suburb. Discover its unique character and culture, epitomised by the mid-century shopfronts of Forest Road fitted with independent and family-owned businesses offering flavours and traditions from around the globe. Westfield and Hurstville Central offer an additional collection of national and international brands, dining and essential services.

This cosmopolitan hub is surrounded by the serene and natural beauty of abundant parklands, world-class beaches and the Georges River National Park.

Positioned
for connectivity,
Hurstville
drives demand.

In recent years population growth in Hurstville has out-performed Metropolitan Sydney, with forecasts predicting consistent year-on-year growth well into the future. Over the next 5 years, demand will exceed supply, with Beyond delivering more than 50% of new homes required to meet the needs of the community.



ROSELANDS SHOPPING CENTRE



HURSTVILLE
STATION

ALLAWAH
STATION

ROCKDALE
STATION

SYDENHAM
STATION

REDFERN
STATION

CENTRAL
STATION

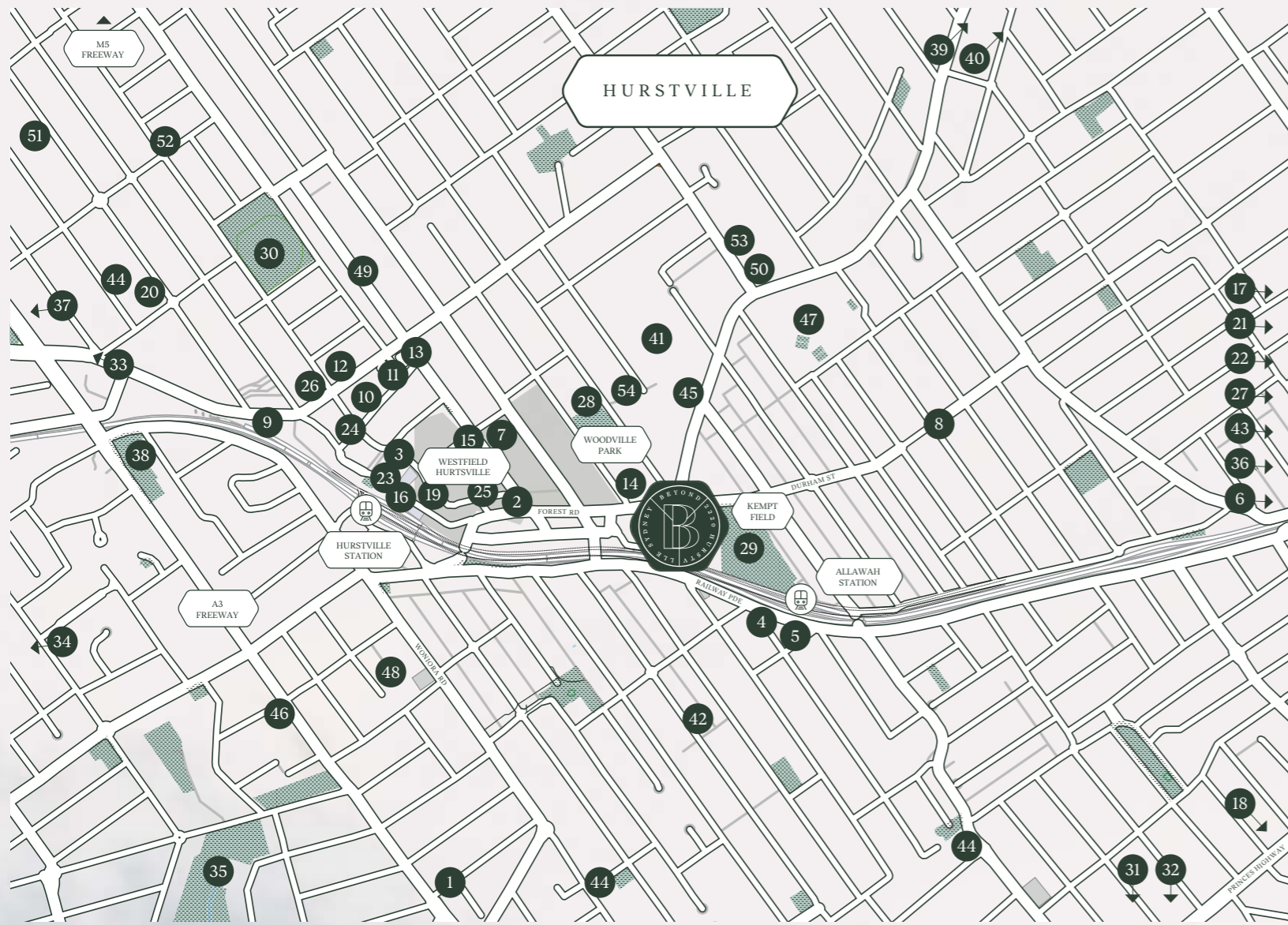
Express train

19
MINS



Hurstville is 16km from the CBD - only 19-minutes by express train. Sydney Airport is easily accessible and Botany Bay is just 5km from home. Hurstville has a pedestrian-friendly walk score of 81/100, meaning most daily tasks can be accomplished on foot, while walking trails and bike paths connect Hurstville to surrounding suburbs and parklands.

JOURNEYS BEYOND



BOTANY BAY RAMSGATE BEACH	7 MIN DRIVE
DOLLS POINT	8 MIN DRIVE
SYDNEY AIRPORT	11 MIN DRIVE
GEORGES RIVER NATIONAL PARK	14 MIN DRIVE
SOUTHERN BEACHES CRONULLA BEACH	23 MIN DRIVE
KAMAY BOTANY BAY NATIONAL PARK	24 MIN DRIVE

CAFE & DINING

- Oregano Bakery
- Hurstville Chinese Restaurant
- Sunny Harbour Yum Cha
- Viking Gourmet Pizza
- Allawah Hotel
- Signature Brasserie
- Westfield rooftop dining
- Mina Bakery
- Nara Lounge

ENTERTAINMENT / LIFESTYLE

- Hurstville Entertainment Centre
- Hurstville Civic Theatre
- Hurstville City Library
- Hurstville City Museum & Gallery

SHOPPING

- Woolworths & Beyond retail laneway
- Westfield Shopping Centre
- Hurstville Central
- Kogarah Town Centre
- Ramsgate Foodies & Farmers Market
- Hurstville Growers Market

MEDICAL

- Hurstville Private Hospital
- St George Private Hospital
- St George Public Hospital
- Hurstville Town Medical Centre
- Wales Medical Centre
- Hurstville Medical Practice
- Waratah Private Hospital

SPORTS / RECREATION

- Brighton Le Sands Beach
- Woodville Park
- Kempt Field
- Hurstville Oval
- Kogarah Bay Sailing Club
- Botany Bay Yacht Club
- Skate Bowl at Olds Park
- Hurstville Golf Club
- Poulton Park
- San Souci Wharf
- Aquatic and Leisure Centre
- Arrowsmith Dog Park

EDUCATION

- Sydney University
- University of Technology Sydney
- Georges River College & Hurstville Boys Campus
- St George Christian School
- Tafe NSW St George Campus
- Good Start Early Learning Childcare
- Hurstville Public School
- Hurstville South Public School
- Sydney Technical High School
- Woniara Road School
- Danebank Anglican School for Girls
- Bethany College
- My Little Angels Learning Academy
- SDN Hurstville Children's Education and Care Centre
- St Mary Star of the Sea Catholic Primary
- Hurstville Adventist School





A NEW

PRECINCT



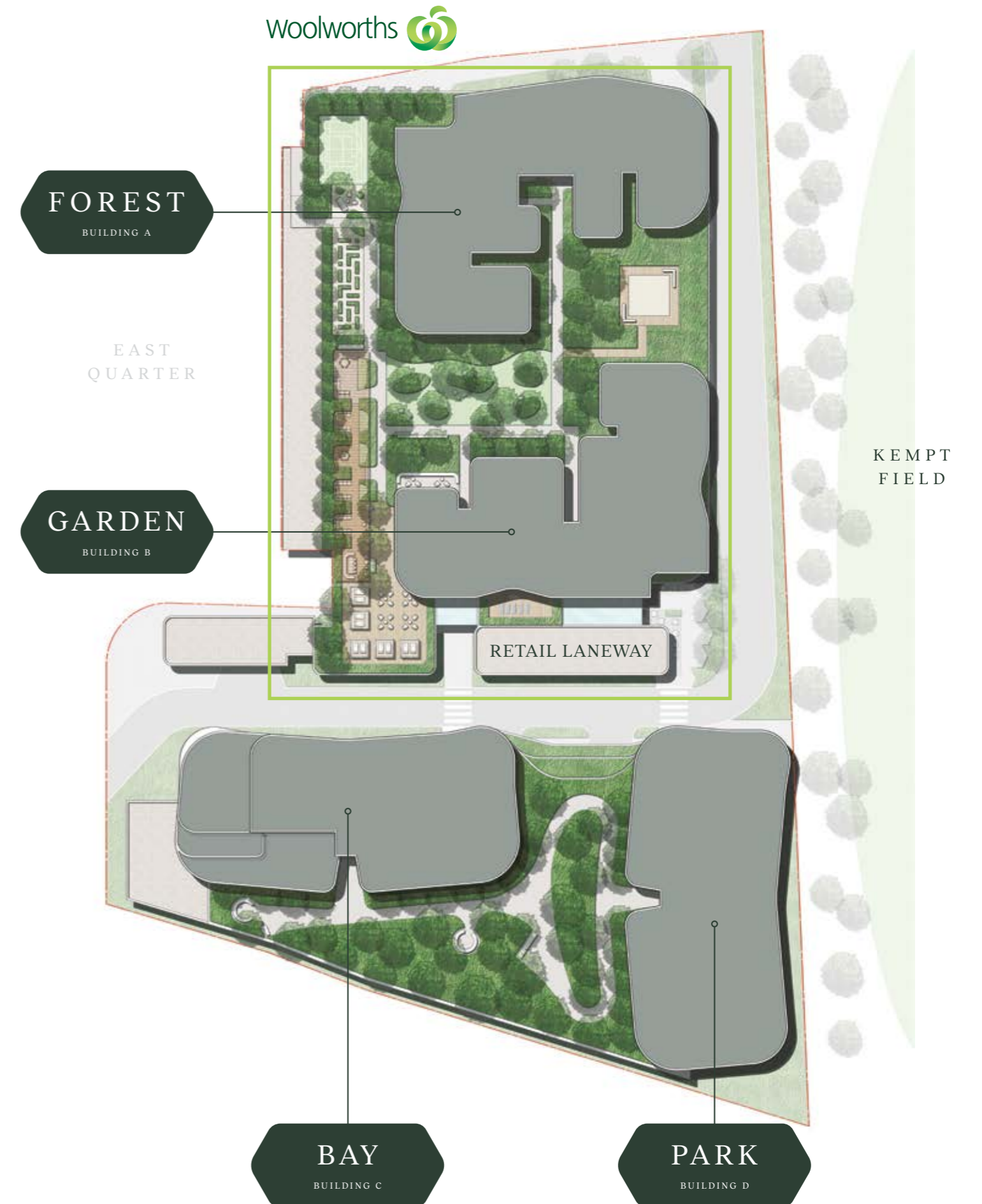
Beyond is a vibrant new precinct that celebrates the evolving popularity and prosperity of Hurstville.

The organic design articulates a timeless sculptural form that blends naturally into its surrounds and connects with the open air and green space of neighbouring parklands.

The Beyond retail precinct, anchored by Woolworths and diverse specialty retailers, creates an activated atmosphere day and night, bringing residents together and enhancing the sense of community living.



PRECINCT MAP



BUILDING

Beyond evokes a sense of inspired living, offering a selection of 1, 2 and 3 bedroom residences immersed in multi-layered garden surroundings and blurring the lines between nature and architecture, apartments and amenities. Life at Beyond is living beyond imagination.



CHARACTER



We believe in designing from the inside out, framed with organic, sculptural architecture. The result is timeless quality balancing form and function.

Sculptural silhouettes rest respectfully on the Hurstville skyline while brick detail pays homage to Hurstville's history. Expansive landscaping unites Beyond with Kempt Field while the considered design enhances views and ambience to all residences. It's this fluidity of design that speaks to life at Beyond, where time becomes endless and communities flourish.







A PLACE

TO BELONG

BEYOND LOBBY BAR





ARTIST IMPRESSION

The lobby bar is an extension of your home — a place to connect, belong, and elevate your daily experience.

S O C I A L





ARTIST IMPRESSION

SPACES WITH DEPTH
OF CHARACTER

SPACES THAT ENHANCE
YOUR DAILY EXPERIENCE

HEALTH & WELLNESS



ARTIST IMPRESSION

Beyond is a holistic environment that nurtures social, emotional and physical wellness.

Seamlessly connected spaces adapt to suit your personal needs, from socialising to solitude. A morning run or group tai chi session, finished with a relaxing moment in the sauna can all form part of your daily routine.

Here is a place to discover your own rhythm. A place to be extraordinary and go beyond your personal best.

SPACES

BEYOND LEVEL • 2

Lose yourself in the gardens for moments of quiet restoration. Host events in private spaces reserved exclusively for you and your guests. Here, simple moments can transform into unforgettable experiences and lasting connections that allow you to write your own story.

BEYOND

The creation of inspiring spaces is at the core of Fridcorp's design philosophy. At Beyond, indoor and outdoor spaces cover an expansive raised podium, providing residents with areas for wellness and sanctuary, entertaining and socialising.

THE EVERYDAY

AMENITIES PLAN



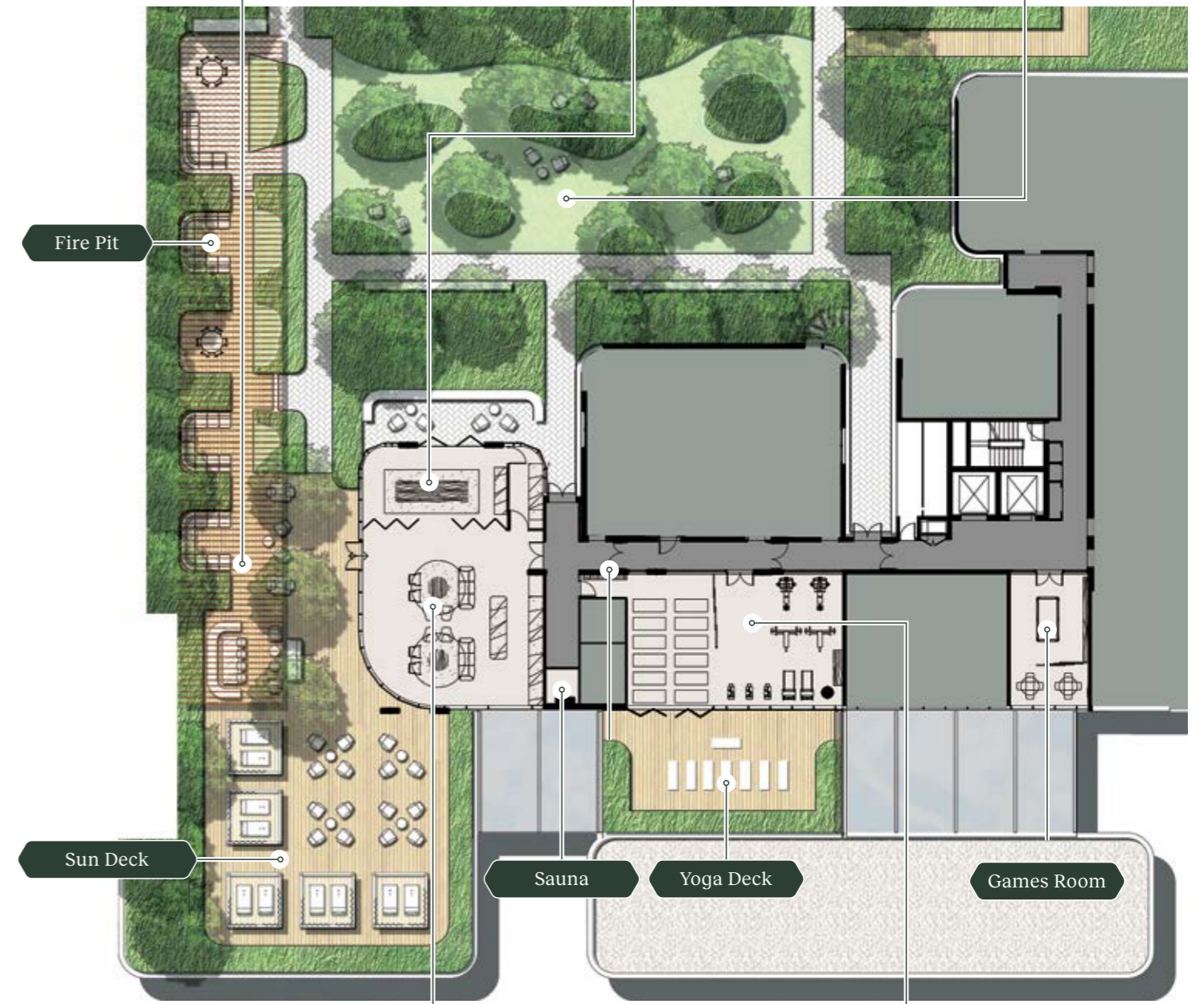
Outdoor Dining & BBQ



Indoor Dining



Garden



Fire Pit

Sun Deck

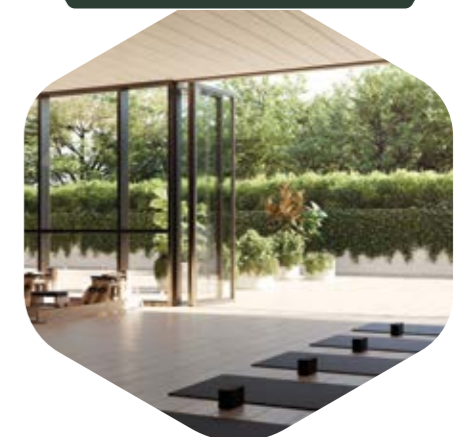
Sauna

Yoga Deck

Games Room

Indoor Lounge

Fitness & Wellness Studio



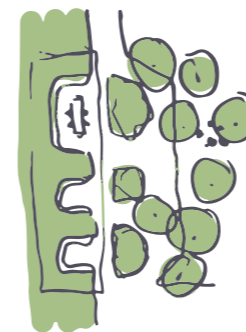
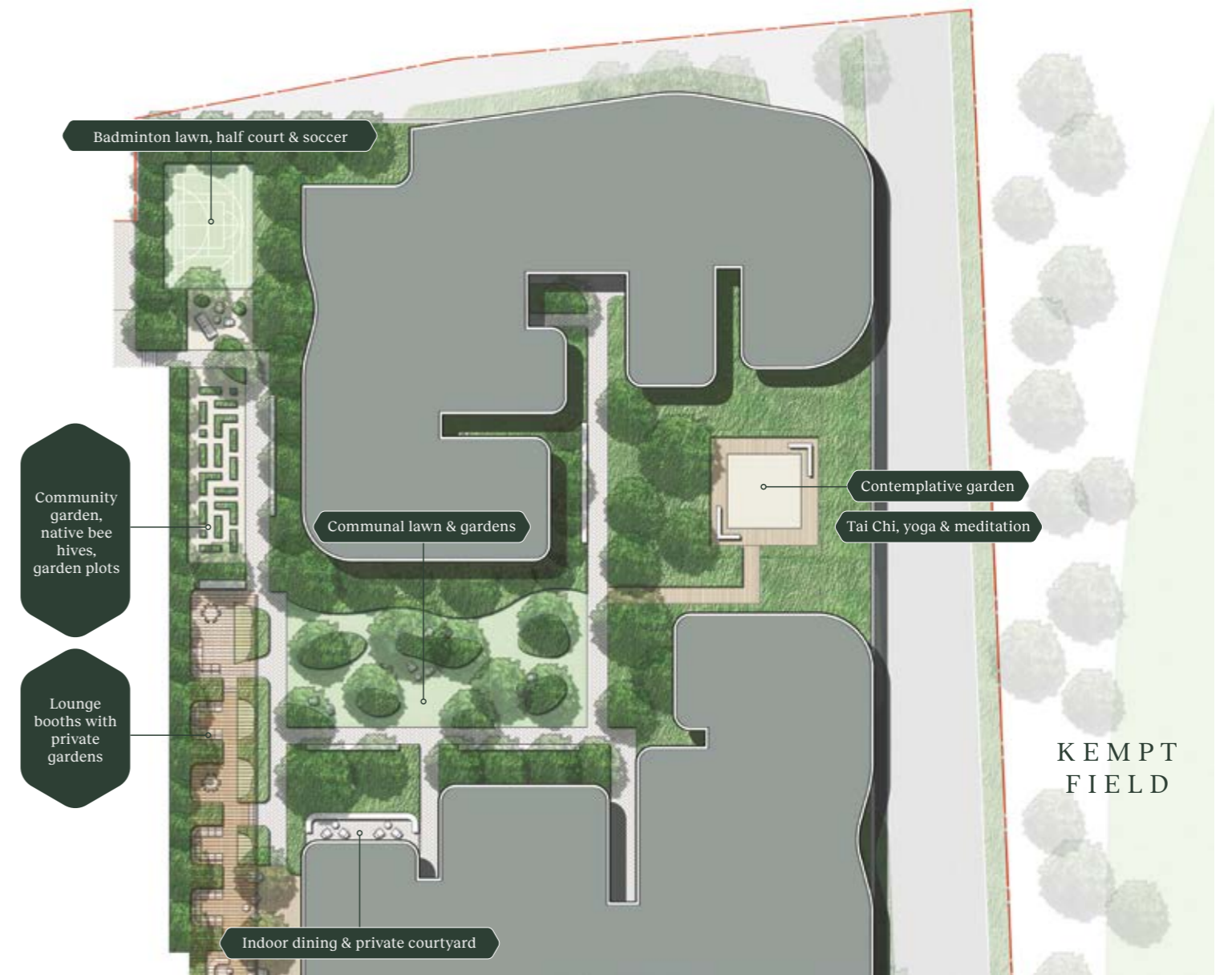
A detailed artist impression of an outdoor patio. The scene is filled with greenery, including large trees and various potted plants. A wooden pergola with a glass roof structure spans the top of the area. On the left, a hot tub is set within a white marble-clad enclosure. In the center and right, there are tables and chairs, including a wicker-style sofa. Several lantern-style lights are suspended from the pergola. The overall atmosphere is serene and inviting.

TAKE THE
CONVERSATION
OUTSIDE

INNER PEACE
THROUGH MOMENTS
OF RESPITE.

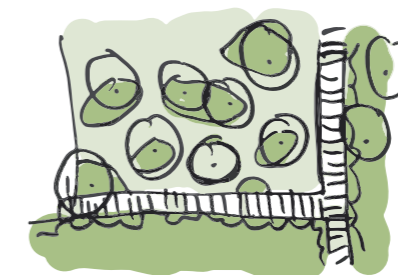
GARDEN

Conceived as a neighbourhood garden, Beyond's extensive landscape is designed for you to connect with nature and each other, to find your own place for moments of respite, new encounters and immersive experiences.



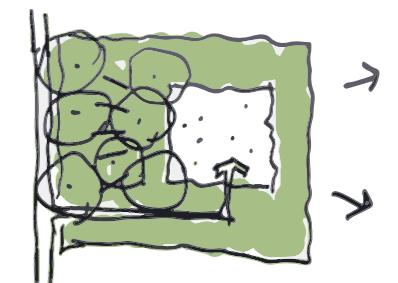
ACTIVE

Social spaces within the landscape design include a series of garden booths where you can settle in as a group, share a picnic or use the Japanese grill. A multi-purpose court, designed for badminton or futsal is a place to savour the joy of the game (and the sweetness of victory). Nearby a veggie garden will be a place to grow fresh produce, herbs and even tea plants for the ultimate fresh brew.



IMMERSIVE

In the more protected area of the garden, 360 Degrees Landscape Architects have let the plants grow wild. Here you can get away from it all and wander off the beaten path, grab a chair and surround yourself in lush foliage.



CONTEMPLATIVE

A collection of garden nooks creates serene spaces for you to unwind and take in the park views. These secluded gardens, including the meditation deck perched above Kempt Field, offer reprieve from daily life, creating the opportunity to reconnect with nature and indulge in quiet moments.



YOUR LOCAL

MARKET

Woolworths 

Beyond offers the ultimate convenience — a full-size Woolworths supermarket and a collection of retailers on the ground floor. The community pick up service for Beyond residents makes shopping safe and easy, bags brimming with produce ready to go. A last-minute shop, a missing ingredient, or a late-night craving are all on your door step.





ARTIST IMPRESSION

AT

HOME

IN

NATURE

Fridcorp is renowned for designing lobby spaces that create a sense of pride.

From the moment you enter Beyond, there is an awareness that you are experiencing something extraordinary — a multi-sensory space that is welcoming and awe-inspiring in equal parts. A place that's exactly where you want to be.





ARTIST IMPRESSION



ARTIST IMPRESSION



ARTIST IMPRESSION



Oversized balconies run the full width of apartments, creating elevated spaces for unwinding and outdoor entertaining.

Floor-to-ceiling windows open to perpetual views across the expanse of Kempt Field to Botany Bay and the city, as well as the stunning landscaped gardens below.



Woods Bagot has created two fresh colour schemes that hero natural materials such as stone benches, beautiful oak flooring and brushed brass finishes.



The organic geometry of the facade continues in the bathrooms, with softly contoured, custom-made baths and basins as well as mirrors that open to reveal additional storage space.



Bespoke bar joinery creates a sophisticated entrance statement that brings the ambience of a great cocktail bar to your home.



STORIES
SHARED AND
COCKTAILS
STIRRED



Be inspired from the moment
you wake up to the moment you
lie back in your luxurious bath.

Living spaces enriched with natural light and airflow inform Fridcorp design.



WELLNESS BY
*Fridcorp*TM

Fridcorp is renowned for delivering design that enhances daily life.

Beyond is no exception, with the precinct's design achieving wellness on a holistic scale, supported by wellness systems and amenity.

Wellness by Fridcorp focuses on enhancing the natural elements of indoor air, water and light, to benefit the health and wellbeing of all residents.

BETTER AIR

BETTER WATER

BETTER LIGHT



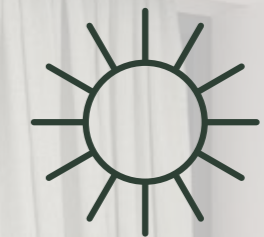
Air Purification

Our air purification system will eliminate up to 99% of allergens, viruses and pathogens to improve air quality in your home.



Water Filtration

Advanced filtration systems remove contaminants to supply crisp, clean and great tasting water.

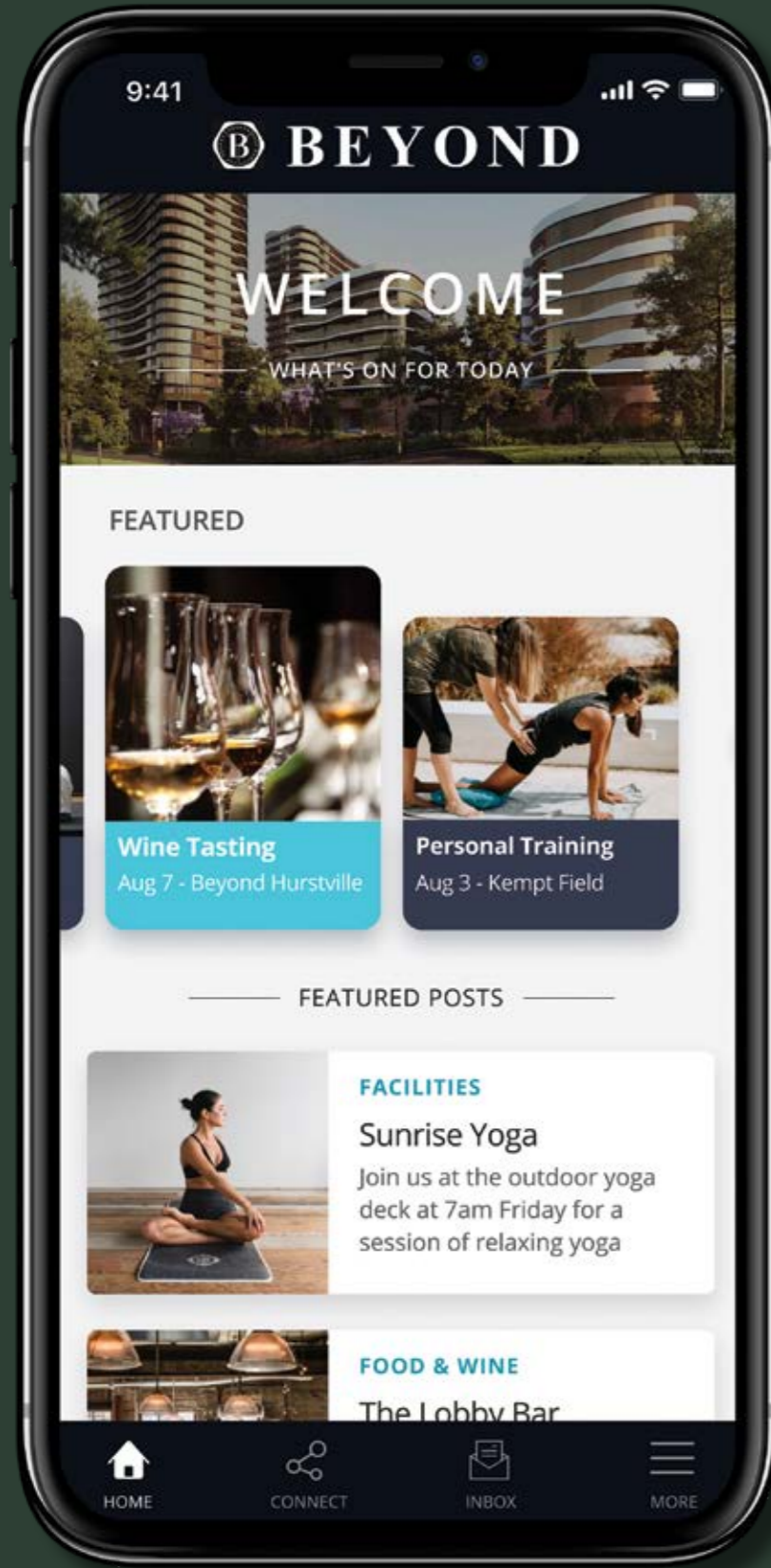


Circadian Lighting

Lighting technology mimics circadian rhythms to assist in regenerative sleep and a balanced mind and body.



The Beyond community app is designed to make life simple and foster a sense of community.



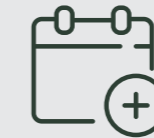
Make Connections

Connect with the Beyond community, create shared-interest groups, from wine clubs to running clubs, discover new passions and explore local events and activities.



Exclusive Offers

Receive exclusive offers from local retailers and stay connected with Hurstville's community and events.



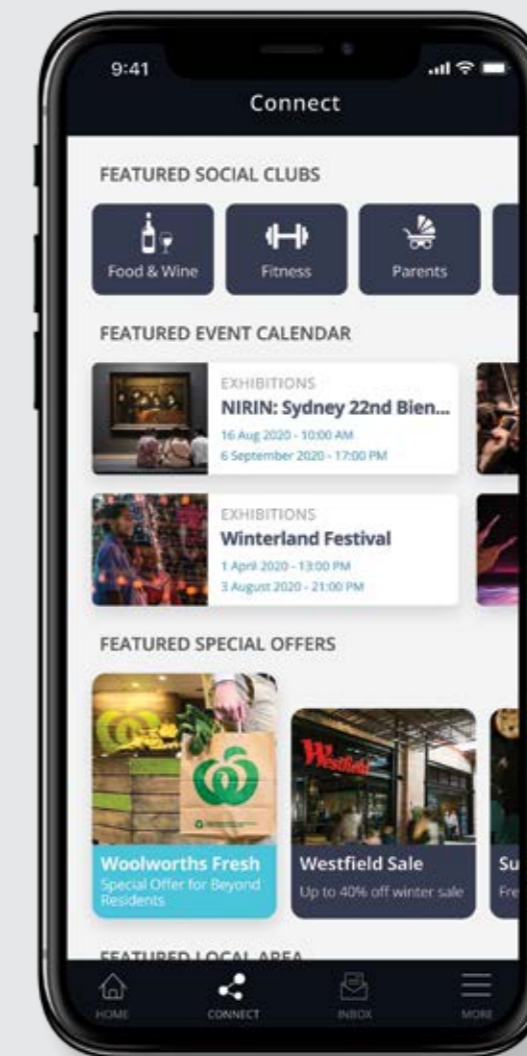
Virtual Concierge

Book private spaces and personal training, manage your social calendar and your parcel deliveries, all from the convenience of home, work or on the move, 24/7.



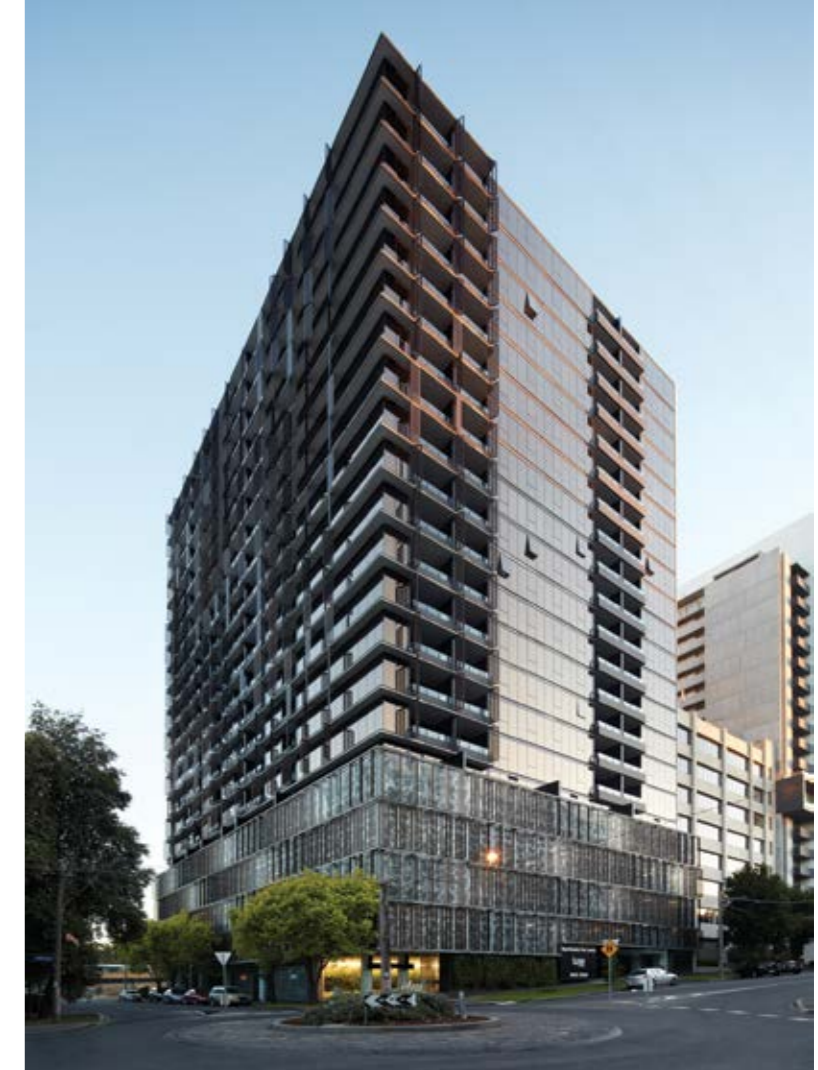
Experience

The Beyond community app is supported both online and in person by our customer experience team who are with you at every step ensuring you have a seamless experience and to help you settle in to your new home.



PROJECT

TEAM



Fridcorp™

BY DESIGN



Inspired by the intersection of art and architecture, Fridcorp is one of Australia's most design focused property developers. Our love of design is evident in every Fridcorp project. We respond to the individual needs of today's buyers and work with Australia's leading architects, interior designers and artists.

Fridcorp is a privately owned Australian company with an enviable record of achievement in property development, consistently delivering on budget and time, exceeding the expectations of the market and buyers.

We identify emerging markets and create developments that generate long-term investment potential and growth for investors and owner-occupiers.





ARCHITECTURE AND AMENITIES

DKO

DKO Architecture is one of Australia's leading innovative design practices specialising in Masterplanning, Urban Design, Architecture and Interior Design with a particular focus on the design and delivery of residential developments. DKO is passionate about developing innovative solutions that respond to the richness, complexity and diversity of the Australian lifestyle. At the core of DKO's design philosophy lies a commitment to an urban architecture that serves people, respects place and stands the test of time.

DKO's passionate and accomplished design team focus on sharp, intelligent and articulated design. With an understanding of how a space works, adapts and moulds with the user, DKO's intuitive approach encourages collaboration on each project, bringing individual strengths and experiences together to maintain a crisp, lively and reflective angle to their designs



INTERIORS

Woods Bagot

Woods Bagot thrives on making places people love.

Placing human experience at the centre of the design process, Woods Bagot is a global studio of visionary designers and place makers renowned for creating distinctive social and living destinations which reflect the needs of modern living and local culture.

Woods Bagot projects make a clear statement on the uniqueness of every experience. There is great importance in the design process on sensory human inputs - be it architecture, food, or fashion - in the creation of a strong design narrative which will shape the lives, aspirations, and personal experiences of the people who will call these apartments home.

Through diligent research and creative endeavour, our residential design projects address current needs and flexibly accommodate changes to come. These goals are achieved through a collaborative dialogue with the developer and by harnessing the collective global intelligence of our 16 studios in Australia, Asia, the Middle East, Europe, and North America.

IMAGE: SHARYN CAIRNS



LANDSCAPE

360 Degrees

Since 2001, 360 have been involved in significant projects for public and private sector clients locally, regionally and internationally. We work across all sectors and scales - in healing, learning, working, city, living and playing environments. We collaborate with our clients and consultants to create unforgettable, transformative and evolving landscapes.

360 was founded as a design-driven studio. We are dedicated to detail with expertise engaged throughout each commission. We build and work with project-specific teams of like-minded thinkers, designers and communicators. We share ideas inside and outside the studio. And what we learn from one project cross pollinates with our thinking on all our others.



PROUDLY BUILT BY

Piety Group

Residents of Beyond will have the complete reassurance that it has been built under the masterful eye of Piety Group. Boasting over 30 years of successful development experience and now setting new standards in construction, they are renowned in the industry for their proven track record of delivering affordable, high quality residential and mixed-use development projects for the community, partners and stakeholders.

Having completed apartment buildings throughout the Sydney region, the company's driven desire to exceed customer expectations is apparent with their continued success in delivering outstanding living experiences - unique and attractive environments that have brought joy and satisfaction to many.



Artwork that appears in renders is courtesy of Dina Broadhurst and Brooklyn Whelan.

dinabroadhurst.com
brooklynwhelan.com

Disclaimer

The information contained in this promotional material is for illustration purposes only and is subject to change. Statements, figures, calculations, plans, images and representations are indicative only. Images may include artist impressions and computer-generated images. Changes may be made during the further planning or development stages of any development and dimensions, fittings, finishes, ongoing costs and specifications and representations are subject to change without notice. Whilst all reasonable care has been taken in providing this information the developer and its related companies and their representatives, consultants and agents accept no responsibility for the accuracy of any information contained herein or for any action taken in reliance thereon by any party whether purchaser potential purchaser or otherwise. Prospective purchasers must make their own enquiries to satisfy themselves as to all aspects of any Fridcorp project and further should seek independent legal and financial advice in relation to all of the information contained herein. The information contained in this material is a guide only and does not constitute an offer, inducement, representation, warranty or contract.

A comprehensive market report is available.

Fridcorp[™]

A
PRECINCT
BY

*Fridcorp*TM